

# RECORD OF SURVEY

LOCATED IN THE  
THE NE 1/4 OF SECTION 13  
TOWNSHIP 31 SOUTH, RANGE 3 WEST, W.M.  
DOUGLAS COUNTY, OREGON

FILED  
Date: 10-14-2018 by JC  
This survey consists of:  
Map: M171-2 A-D  
Narrative: \_\_\_\_\_  
Corner Rpt: \_\_\_\_\_  
**DOUGLAS COUNTY  
SURVEYOR**

**CORNER NOTES:**

**(95082)**  
NORTHEAST CORNER SECTION 13  
FOUND 3" BRASS CAP  
STAMPED PLS 944, 1979  
BY REFERENCES:  
1) FOUND 23.3" FIR WITH HEALED FACE  
AND TAG DATED 12/79  
N 58° E - 25.1'  
2) FOUND 5" FIR SNAG WITH VISIBLE SCRIBES  
N 39°15' W - 11.1'  
3) FOUND 59" FIR WITH HEALED FACE  
AND TAGS DATED 12/79 AND 1959  
N 71° W - 26.3'

**(140178)**  
1/4 CORNER SECTIONS 12 AND 13  
FOUND 2-1/2" BRASS CAP  
STAMPED COUNTY SURVEYORS OFFICE 1965  
BY REFERENCES:  
1) FOUND 16.5" FIR WITH HEALED FACE  
AND TAG DATED 11/79  
S 61° E - 25.4' TO NAIL SIDE CENTER  
AND TAG DATED 11/19/79  
S 2°30' E - 35.4'  
3) FOUND 13.7" CEDAR WITH HEALED FACE  
SET TAG DATED 10/13  
N 58° E - 41.7' TO NAIL SIDE CENTER

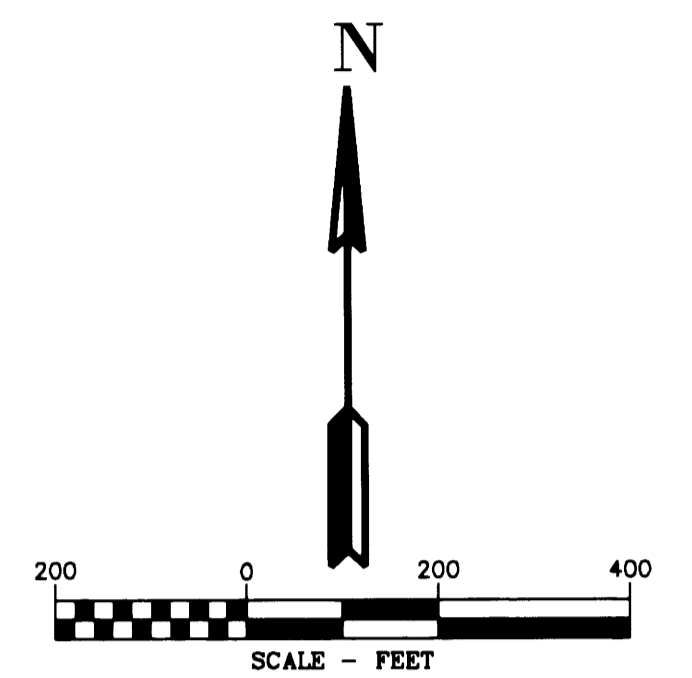
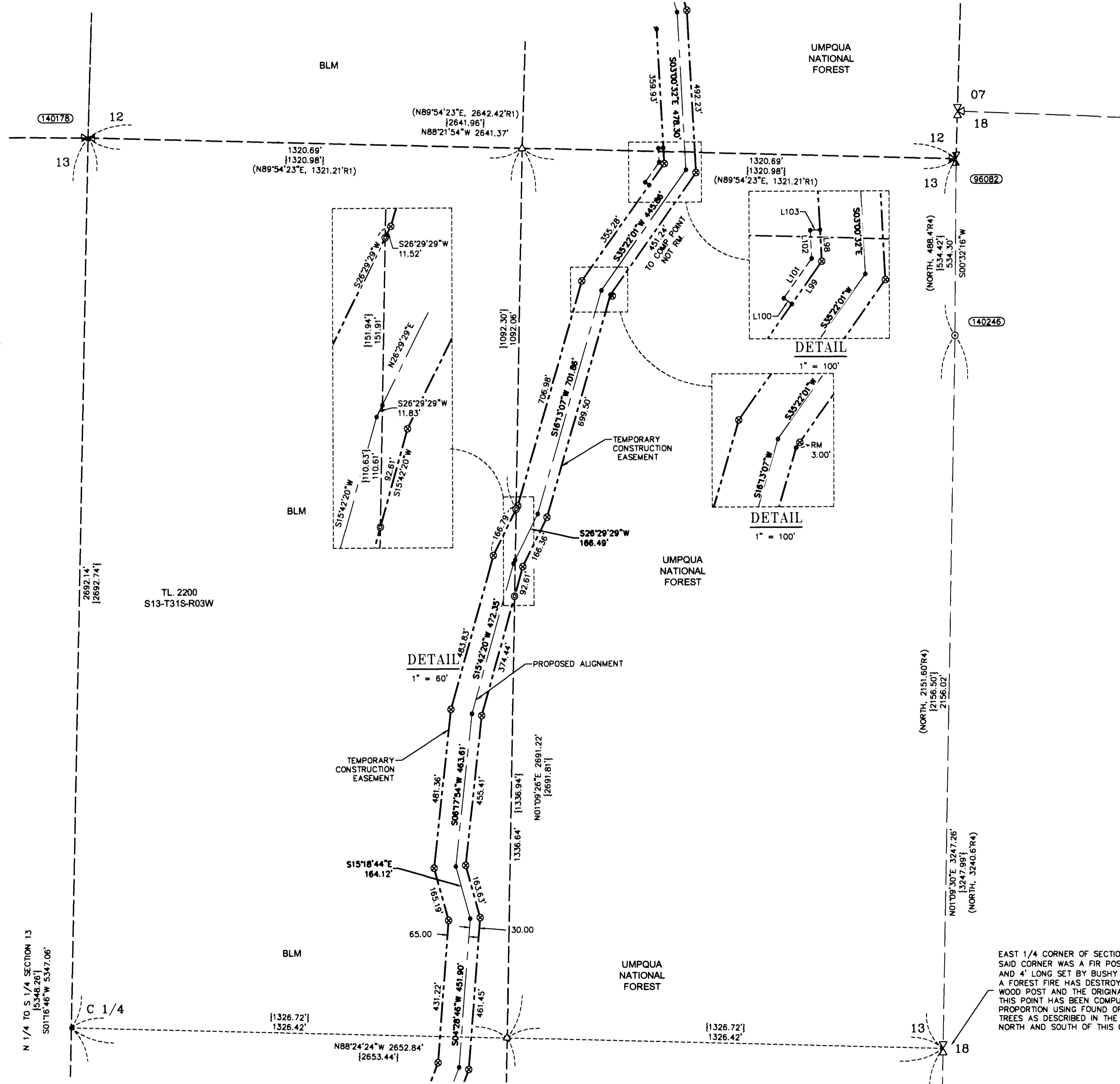
**(140248)**  
FOUND ORIGINAL LINE TREE  
FOUND 55" BURNT AND DECAYING SNAG  
WITH 2 VISIBLE NOTCHES ON THE NORTH  
PER THE ORIGINAL NOTES.  
(72.60 CHAINS NORTH OF SE CORNER OF SECTION 13)  
SET BEARING TREE TAG ON SNAG AND  
FLAGGED AND PAINTED THE NOTCHES.

**REFERENCE SURVEYS:**

- 1) RECORD OF SURVEY NO. M79-20 - MAY 22, 1980
- 2) RECORD OF SURVEY NO. M79-43 - JUNE 9, 1980
- 3) RECORD OF SURVEY NO. 166-29 - FEBRUARY 9, 2015
- 4) ORIGINAL GLO PLAT, TOWNSHIP 31 SOUTH, RANGE 3 WEST - JUNE 29, 1895
- 5) RECORD OF SURVEY NO. M166-40 - AUGUST 17, 2015

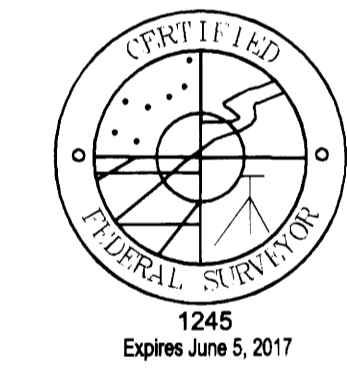
**LEGEND**

- SET 5/8" X 24" REBAR WITH 1 1/4" YELLOW PLASTIC CAP (KLEIN & ASSOC. LS 59002)
- FOUND 5/8" X 24" REBAR WITH 1 1/4" YELLOW PLASTIC CAP (KLEIN & ASSOC. LS 59002) PER M166-40
- FOUND 5/8" X 24" REBAR WITH 1 1/4" YELLOW PLASTIC CAP (PRIMM LAND SURVEYING, INC. LS 48490) PER M166-40
- ⊙ FOUND 5/8" X 24" REBAR WITH 1 1/4" YELLOW PLASTIC CAP (DYER PARTNER LS 2340) PER M166-40
- FOUND MONUMENT OF RECORD, SEE CORNER NOTES
- COMPUTED POINT, NOT MONUMENTED
- ⊠ FOUND QUARTER CORNER SEE CORNER NOTES
- ⊞ FOUND SECTION CORNER SEE CORNER NOTES
- ⊞ COMPUTED QUARTER CORNER
- ⊞ COMPUTED SECTION CORNER
- △ CORNER SEARCHED AND NOT FOUND
- (100000) POINT NUMBER
- {XXX.XX'} GROUND DISTANCE
- {XXX.XX'} RECORD DISTANCE PER REFERENCED SURVEY
- R1 REFERENCED SURVEY
- PROPOSED ALIGNMENT
- TEMPORARY CONSTRUCTION EASEMENT
- TEMPORARY WORK AREA



LINE TABLE		
Line #	Direction	Length
L98	S03°00'32"E	47.88'
L99	S35°22'01"W	78.92'
L100	S54°37'59"E	15.00'
L101	S35°22'01"W	73.70'
L102	S03°00'32"E	42.66'
L103	S86°59'28"W	15.00'

NOTE: ALL LINES REFERENCED PER COUNTY SURVEY M166-40



REGISTERED PROFESSIONAL LAND SURVEYOR  
*Douglas A. Popham*  
OREGON  
JULY 14, 1998  
DOUGLAS A. POPHAM  
2877  
Expires 12-31-2016

**Primm Land Surveying, Inc.**  
 1340 NE 4th Street, Hermiston, OR 97838  
 TEL (541) 564-7887 FAX (541) 567-8020

REGISTERED PROFESSIONAL LAND SURVEYOR  
*James M. Klein*  
OREGON  
JULY 12, 2006  
JAMES M. KLEIN  
59002  
Expires 6-30-2017

**Klein & Associates, Inc.**  
 ENGINEERING • SURVEYING • PLANNING  
 1411 13th Street • Hood River, OR 97031  
 TEL: 541-386-3322 • FAX: 541-386-2515

EAST 1/4 CORNER OF SECTION 13 WAS NOT FOUND. SAID CORNER WAS A FIR POST 4" SQUARE AND 4' LONG SET BY BUSHY IN 1894. A FOREST FIRE HAS DESTROYED THE WOOD POST AND THE ORIGINAL BEARING TREES. THIS POINT HAS BEEN COMPUTED BY SINGLE PROPORTION USING FOUND ORIGINAL LINE TREES AS DESCRIBED IN THE ORIGINAL NOTES NORTH AND SOUTH OF THIS CORNER.

**PACIFIC CONNECTOR GAS PIPELINE PROJECT**  
 PACIFIC CONNECTOR GAS PIPELINE, LP  
 RECORD OF SURVEY  
 SECTION 13  
 TOWNSHIP 31 SOUTH, RANGE 3 WEST, W.M.  
 DOUGLAS COUNTY OREGON

DRAWN BY: LIS	DATE: 08-25-2015	ISSUED FOR BID:	SCALE: 1" = 200'
CHECKED BY:	DATE:	ISSUED FOR CONSTRUCTION:	
APPROVED BY:	DATE:	DRAWING NUMBER:	SHEET 2 OF 4