

SURVEY IN THE SW 1/4 OF SECTION 16, T27S, R6W, W.M.

FOR: GENE WELLS

BY: BHW ENGINEERING & SURVEYING, INC.
1205 S.E. COURT - ROSEBURG, OREGON

COUNTY SURVEYOR FILE DATA
NOT REMOVE FROM OFFICE

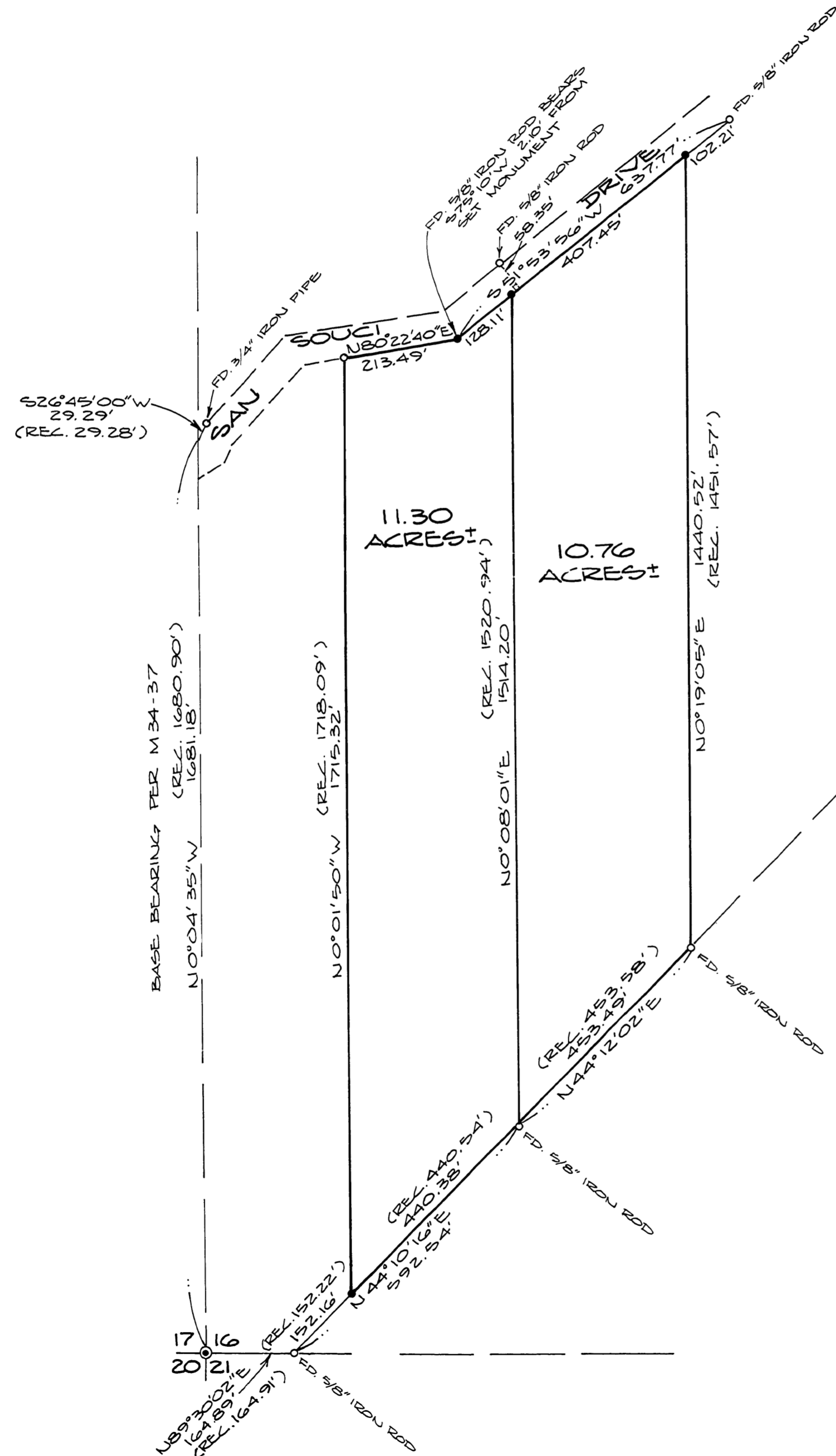
FILED
RECEIVED 88

SEP 10 1981

COUNTY SURVEYOR
DOUGLAS COUNTY, ORE.

SCALE: 1" = 200'

JULY 1981



LEGEND:

- SET 5/8" x 30' IRON ROD
- FOUND MONUMENT AS NOTED
- ⊙ FOUND BRASS CAP

NARRATIVE:

SURVEY TO ESTABLISH PROPERTY LINES. ROAD CONTROL ESTABLISHED PER FOUND MONUMENTS. FIELD CREW CONSISTED OF M. RADCLIFFE & D. DELATTE USING WILD T-1 THEODOLITE AND RED-1 E.D.M. COMPUTATIONS BY R. WARE. DRAFTING BY D. HOPKINS. FOR RECORD BEARINGS AND DISTANCES SEE M 34-37. OTHER REFERENCE SURVEYS INCLUDE M 32-55 & M 38-4. REFERENCE DEEDS: INSTRUMENT NOS. 79-15060 & 79-15061.

Roman E. Wen