

COUNTY SURVEYORS FILE DATA  
DO NOT REMOVE FROM OFFICE  
**SURVEY FOR PROPERTY CORNERS**

IN NW 1/4 OF SECTION 24, T.27S. R.6W. W.M. — SCALE 1"=20'

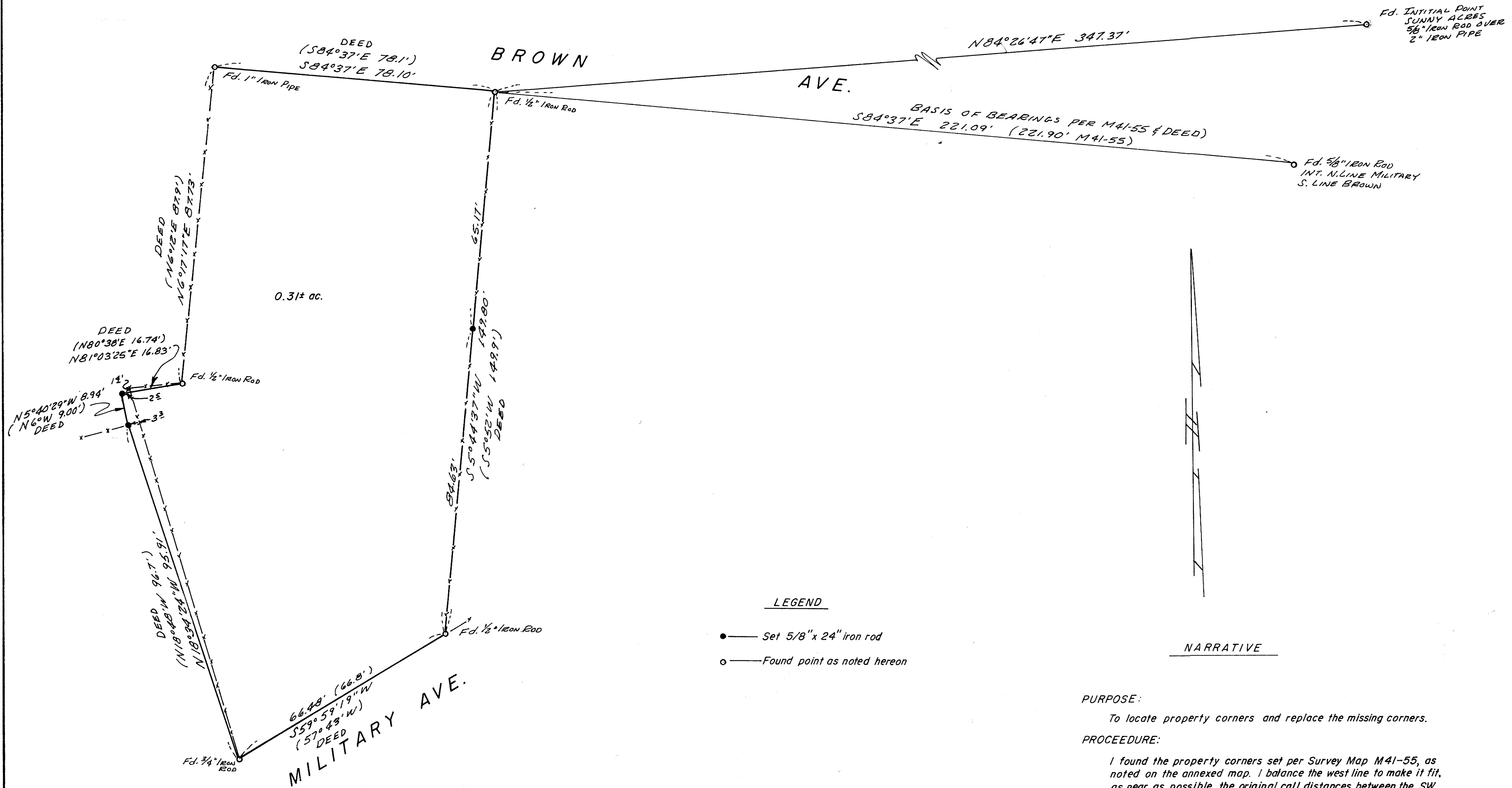
FOR: **WALTER RILEY**  
BY: **A A SURVEYING SERVICE INC.**  
P.O. BOX 130, ROSEBURG, OREGON 97470

SEPTEMBER 1981

REGISTERED  
PROFESSIONAL  
LAND SURVEYOR

*Eugene A. Bloom*  
OREGON  
MAY 15, 1940  
EUGENE A. BLOOM  
492

FILED ✓  
RECEIVED ✓  
SEP 8 1981  
COUNTY SURVEYOR  
DOUGLAS COUNTY, ORE.  
7



LEGEND

- — Set 5/8" x 24" iron rod
- — Found point as noted hereon

NARRATIVE

**PURPOSE:**  
To locate property corners and replace the missing corners.

**PROCEDURE:**  
I found the property corners set per Survey Map M41-55, as noted on the annexed map. I balance the west line to make it fit, as near as possible, the original call distances between the SW corner and the found interior corner and then set the missing corners.

MAP FILE 10285-72

MAP FILE 10285-72