

Resurvey of Section 36, T 31 S, R 8 W, Willamette Meridian, Oregon

For Roseburg Lumber Company

August 18, 1981

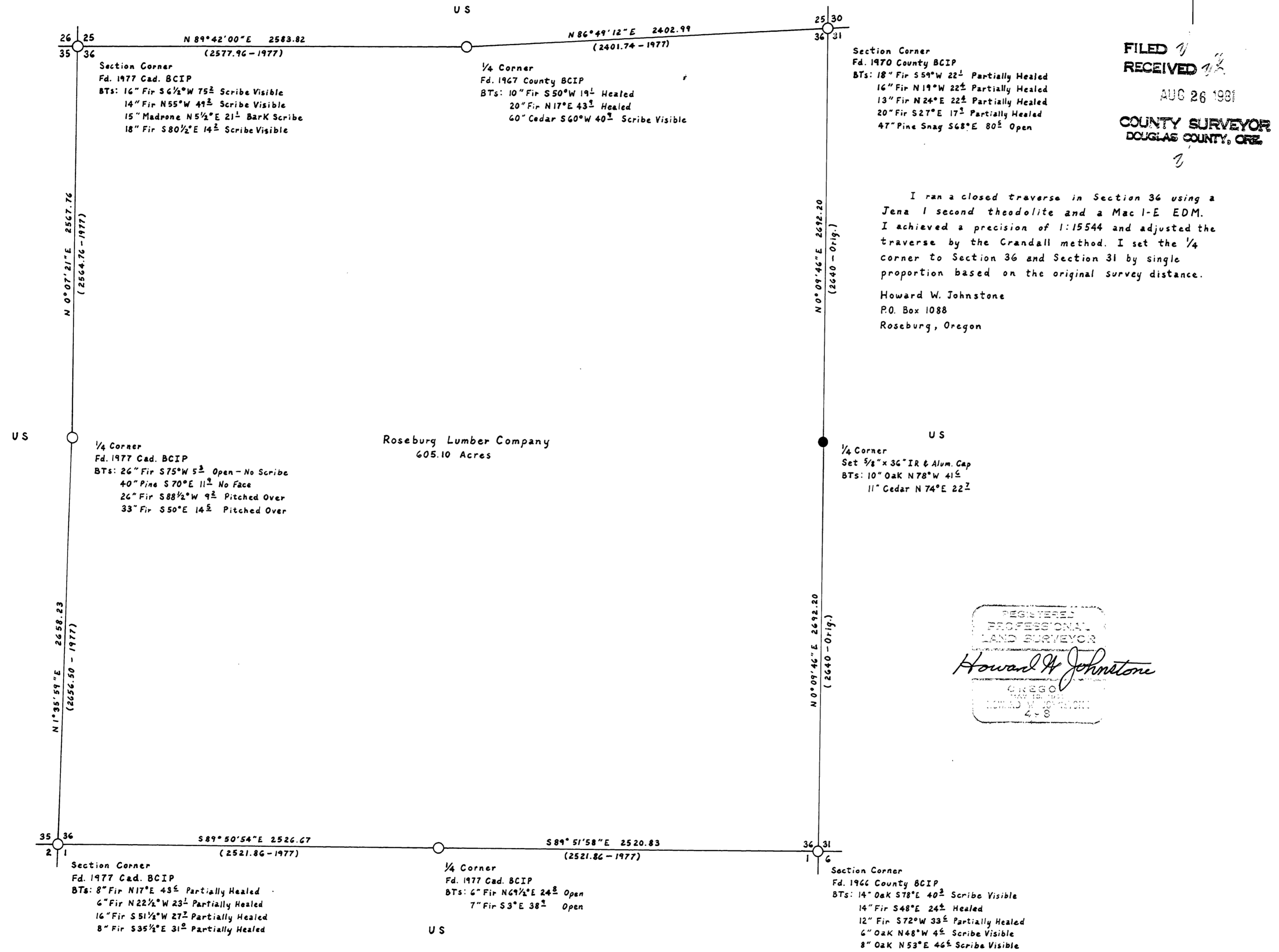
Legend

- Monument Found
 - Monument Set
 - Section Line
 - () Record Data
- All Lines Blazed and Referenced to Aluminum Tags

Scale: 1" = 500'



Bearing Based on Solar Observation



FILED
RECEIVED
AUG 26 1981
COUNTY SURVEYOR
DOUGLAS COUNTY, ORE.

I ran a closed traverse in Section 36 using a Jena 1 second theodolite and a Mac I-E EDM. I achieved a precision of 1:15544 and adjusted the traverse by the Crandall method. I set the 1/4 corner to Section 36 and Section 31 by single proportion based on the original survey distance.

Howard W. Johnstone
P.O. Box 1088
Roseburg, Oregon

REGISTERED
PROFESSIONAL
LAND SURVEYOR
Howard W. Johnstone
OREGON
MAY 15 1980
DOUGLAS COUNTY
4-8

MAP FILE MBB-62

