

COUNTY SURVEYORS FILE DATA  
DO NOT REMOVE FROM OFFICE  
**SURVEY OF A 60 FOOT ROADWAY FOR A.S. JOHNSON**

SW/4 SECTION 34 T.24S. R.6W.W.M. — OCTOBER 1978

BY: BAUGHMAN TECHNICAL SERVICES INC.

P.O. Box 222, ROSEBURG, OREGON

REGISTERED  
PROFESSIONAL  
LAND SURVEYOR

*Glenn S. Baughman*

OREGON  
JULY 14, 1961  
GLENN S. BAUGHMAN  
536

MAP FILE M56-61

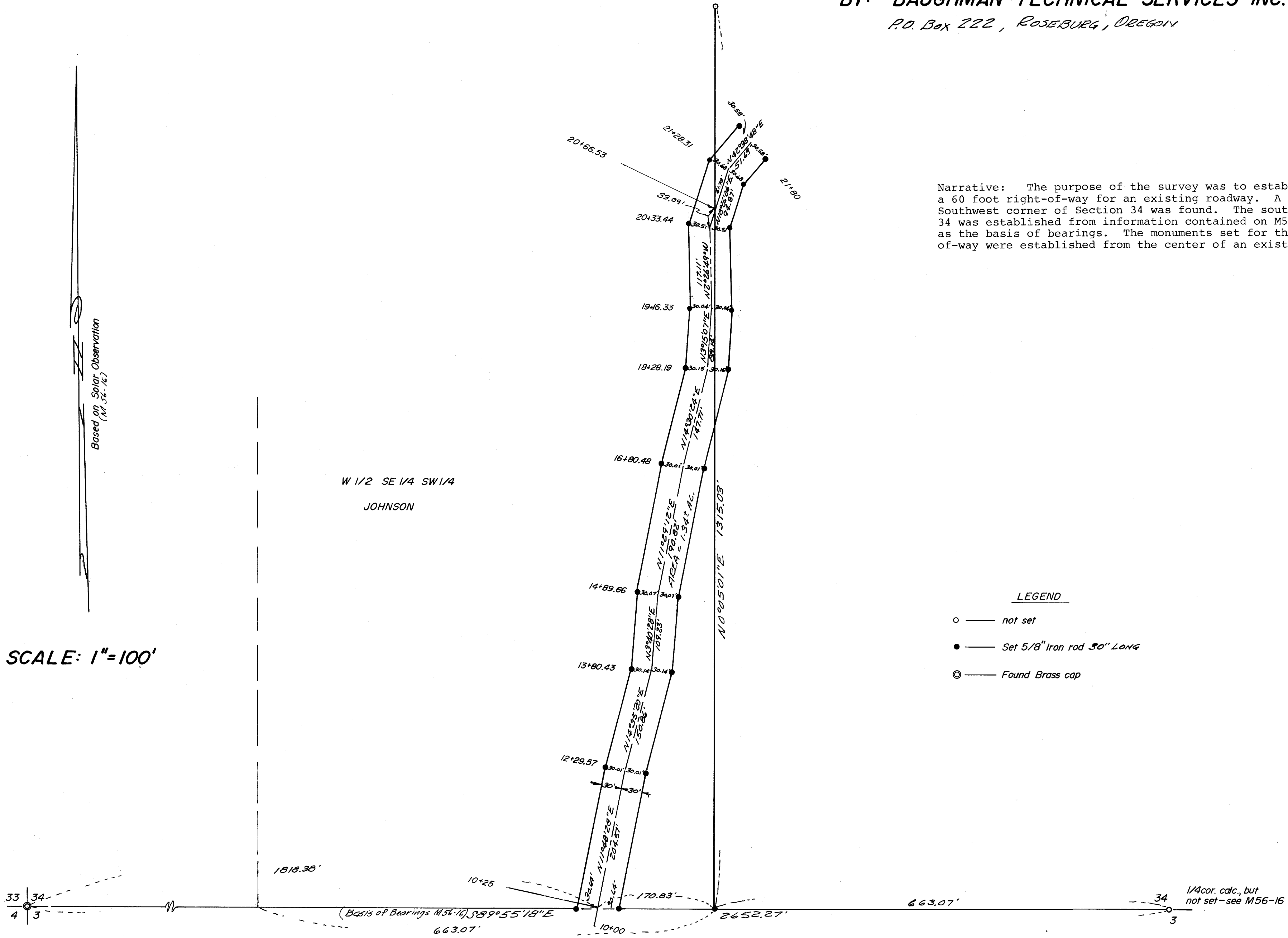
Narrative: The purpose of the survey was to establish and monument a 60 foot right-of-way for an existing roadway. A brass cap at the Southwest corner of Section 34 was found. The south line of Section 34 was established from information contained on M56-16 and was used as the basis of bearings. The monuments set for the 60 foot right-of-way were established from the center of an existing roadway.

FILED *v*  
RECEIVED *1/2*

AUG 26 1981

COUNTY SURVEYOR  
DOUGLAS COUNTY, ORE.

*v*



LEGEND

- — not set
- — Set 5/8" iron rod 30" LONG
- ⊙ — Found Brass cap

SCALE: 1" = 100'

Based on Solar Observation  
(M56-16)

W 1/2 SE 1/4 SW 1/4  
JOHNSON

1/4 cor. calc., but  
not set — see M56-16

MAP FILE M56-61