

SURVEY IN THE SE 1/4 OF SECTION 24, T25S, R7W, W.M.

FOR: LAUREN YOUNG
BY: BHW ENGINEERING & SURVEYING
1205 SE COURT-ROSEBURG, OREGON-673-0165

COUNTY SURVEYORS FILE DATA
DO NOT REMOVE FROM OFFICE

FILED
RECEIVED
AUG 20 1981
COUNTY SURVEYOR
DOUGLAS COUNTY, ORE.

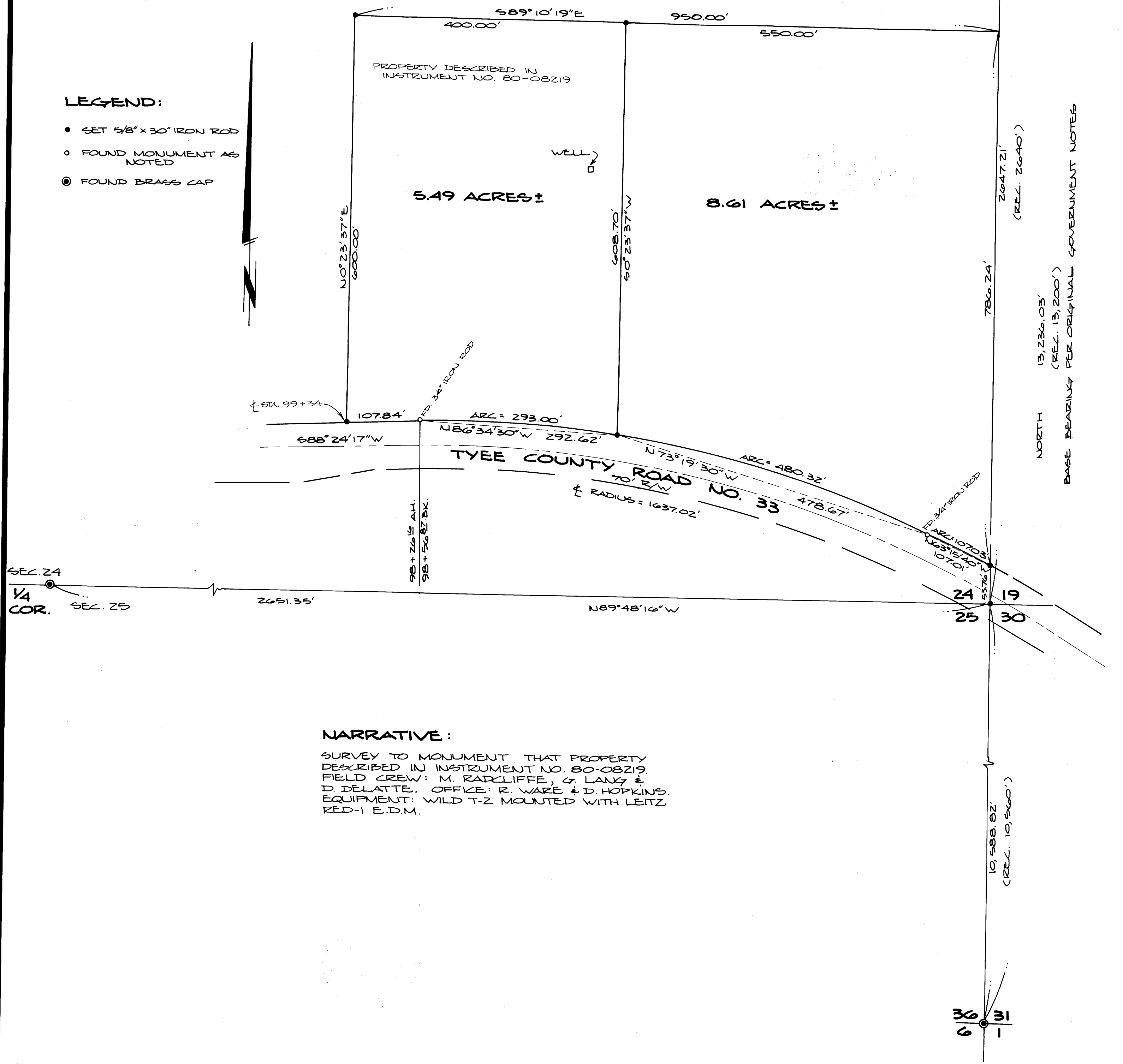
SCALE: 1" = 100'

AUGUST 1981

REGISTERED
PROFESSIONAL
LAND SURVEYOR
Romanso E. Ware
OREGON
NOV. 16, 1973
ROMANSO E. WARE
1005

LEGEND:

- SET 5/8" x 30" IRON ROD
- FOUND MONUMENT AS NOTED
- ◎ FOUND BRASS CAP



NARRATIVE:

SURVEY TO MONUMENT THAT PROPERTY DESCRIBED IN INSTRUMENT NO. 80-08219. FIELD CREW: M. RADCLIFFE, G. LANG & D. DELATTE. OFFICE: R. WARE & D. HOPKINS. EQUIPMENT: WILD T-2 MOUNTED WITH LEITZ RED-1 E.D.M.

NORTH
13,236.03'
(REL. 13,200')
BASE BEARING PER ORIGINAL GOVERNMENT NOTES

10,585.82'
(REL. 10,500')