

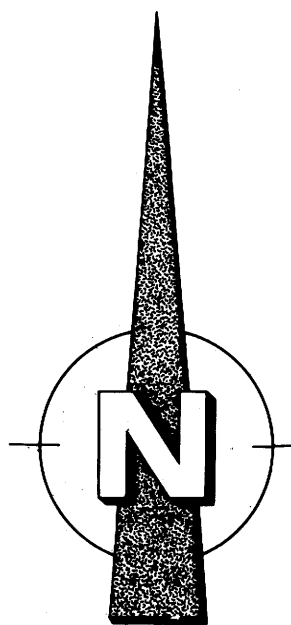
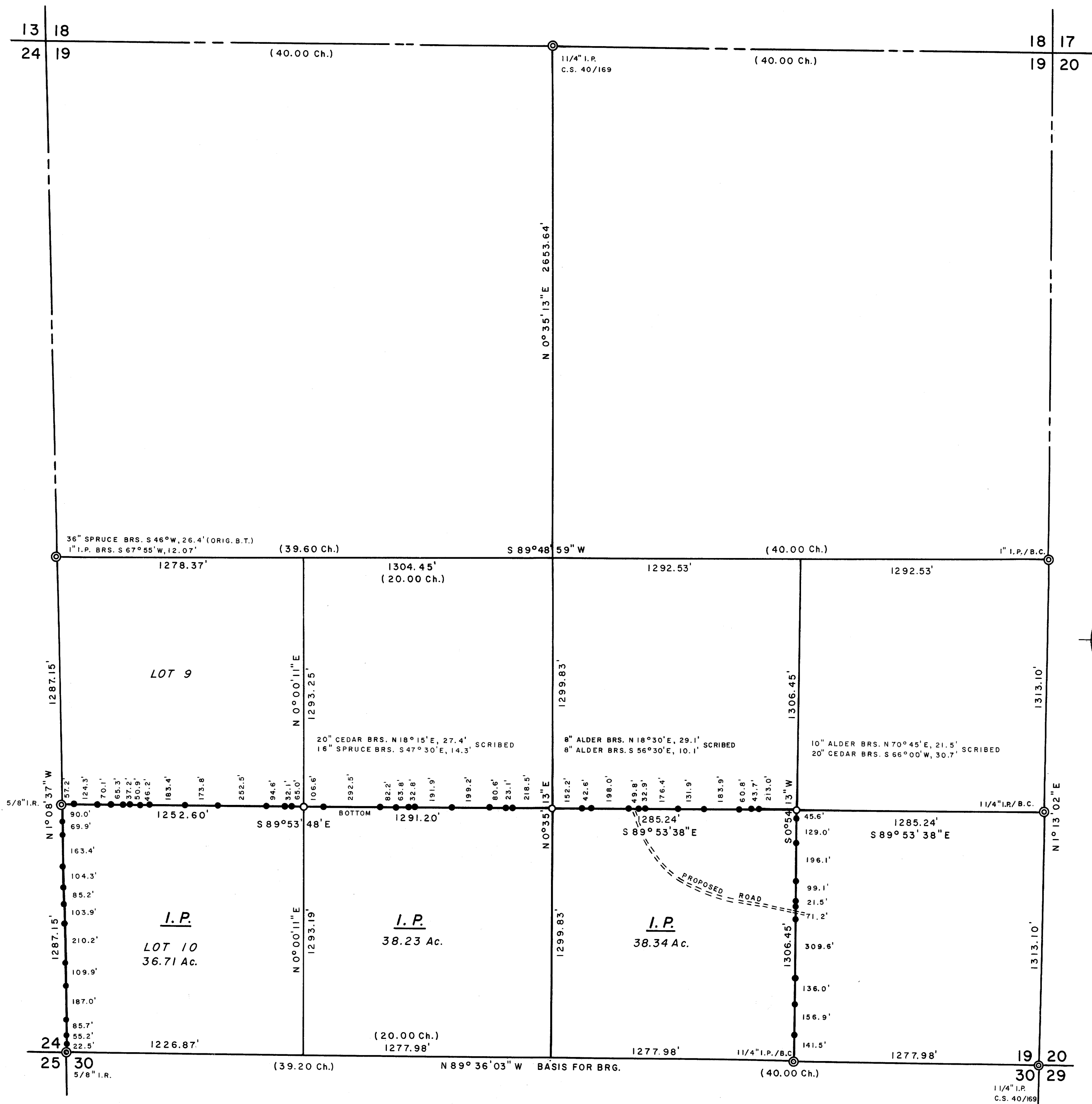
FILED *jh*
RECEIVED *jh*

AUG 20 1981

COUNTY SURVEYOR
DOUGLAS COUNTY, ORE.

PROPERTY SURVEY
FOR
INTERNATIONAL PAPER CO.

SEC. 19, T 21 S, R 11 W, W.M.
SCALE 1" = 400' AUGUST 1981



LEGEND

CORNERS FOUND \odot
SET 1 1/4 x 36" I.P.'S / STAMPED BRASS CAPS \circ
PROPERTY LINES ESTABLISHED, 1/2" x 60" I.R.'S
WITH ATTACHED ALUMINUM SIGNS



NOTES

1. BASIS FOR BRG. M 70-74 (TRUE FROM SOLAR OBSERVATION) VAR. 18° 45'
2. DISTANCES ARE TAKEN TO A 50d NAIL IN THE CENTER OF EACH BEARING TREE.
3. THIS SURVEY WAS MADE IN ACCORDANCE WITH THE B.L.M. MANUAL OF SURVEY INSTRUCTIONS.
4. SECTION 19 WAS INCORRECTLY SUBDIVIDED BY ME IN SEPT. 1976, M 62-1. THE EAST 1/16 CORNER BETWEEN SECTIONS 19 & 30 WAS RESET IN JUNE 1979, M 70-74. THE CS 1/16 AND THE SE 1/16 CORNERS WERE RESET DURING THIS SURVEY AND THE SOUTH 1/4 CORNER WAS REMOVED AND NOT RESET.
5. (FROM THE ORIGINAL G.L.O. NOTES)

REGISTERED
PROFESSIONAL
LAND SURVEYOR

Richard J. Hintz

OREGON
MAY 13, 1980
RICHARD J. HINTZ
497

RICHARD J. HINTZ
1890 N. 14th ST.
COOS BAY, OREGON