

N.W. SECTION CORNER

FD, 1957 B.L.M. BRASS CAP
 12" FIR, S 54 1/2° E, 11.8' (SCAR VIS.), 1899 B.T.
 22" FIR, N 26° E, 17.5' (SCAR VIS.), 1899 B.T.
 30" FIR, N 51 1/2° W, 10.4' (SCAR VIS.), 1899 B.T.
 24" FIR, S 81° W, 29.2' (SCAR VIS.), 1957 B.T.

NORTH 1/4 CORNER

FD, 2" IRON PIPE AT BASE OF 18" LIVE FIR. C.S. NO. 57-9
 SET BRASS CAP IN FOUND PIPE
 30" FIR, S 68° E, 11.3' (SCAR VIS.), 1899 B.T.
 16" FIR, S 54° E, 34.8' (SCAR VIS.), 1957 B.T.
 18" FIR, N 12° W, 19.5' (SCAR VIS.), 1957 B.T.

COUNTY SURVEYORS FILE DATA
 30 APR 20 1981 REMOVE FROM OFFICE

FILED 3
 RECEIVED *jt*
 JUL 22 1981

COUNTY SURVEYOR
 DOUGLAS COUNTY, ORE

SURVEY OF
 SECTION 10, T19 S, R 9 W, W.M.
 DOUGLAS COUNTY, OREGON
 FOR
 INTERNATIONAL PAPER COMPANY

BY
 ROBERTS SURVEYING INC.
 29 WEST 29TH STREET
 EUGENE, OREGON 97405
 JULY 16, 1981

"A" WEST 1/16 CORNER

SET 1 1/2" x 36" IRON PIPE & BRASS CAP
 (1/16 CORNER SET IN C.S. NO. 57-9
 BEARS N 89° 27' 47" E, 13.88')
 22" MAPLE, N 5° E, 4.6' (SCRIBED)
 24" ALDER, S 80° E, 7.8' (SCRIBED)

"B" NORTH 1/16 CORNER

FD, 5/8" IRON PIN, SET IN C.S. NO. 57-9
 (DROVE 1 1/2" x 36" IRON PIPE & BRASS CAP OVER PIN)
 10" FIR, N 54° W, 24.0' (SCRIBE VIS.), 1975 B.T.
 16" FIR, S 28° E, 29.6' (SCRIBE VIS.), 1975 B.T.

"C" WEST 1/4 CORNER

FD, 1968 B.L.M. BRASS CAP
 16" FIR, S 46° W, 24.8' (SCAR VIS.), 1968 B.T.
 18" FIR, S 40° E, 7.8' (SCAR VIS.), 1968 B.T.

"D" SOUTH 1/16 CORNER

SET, 1 1/2" x 36" IRON PIPE & BRASS CAP
 26" FIR, S 23° W, 38.2' (SCRIBED)
 31" HEMLOCK, N 10° E, 27.2' (SCRIBED)

"E" WEST 1/16 CORNER

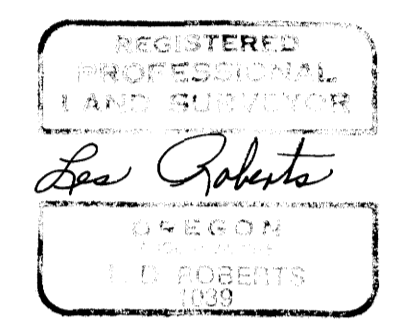
SET, 1 1/2" x 36" IRON PIPE & BRASS CAP
 12" FIR, N 70° W, 12.6' (SCRIBED)
 18" FIR, N 43° E, 14.6' (SCRIBED)

NARRATIVE

I, LESLIE ROBERTS, REGISTERED PROFESSIONAL LAND SURVEYOR DO CERTIFY THAT I HAVE CORRECTLY SURVEYED SECTION 10 IN ACCORDANCE TO THE MANUAL OF INSTRUCTIONS FOR THE SURVEY OF THE PUBLIC LANDS OF THE UNITED STATES. THE WEST 1/16 CORNER BETWEEN SECTIONS 3 AND 10 WAS SET AT PROPORTIONATE MEASURE BETWEEN THE NORTH 1/4 CORNER AND THE N.W. SECTION CORNER. THE SOUTH 1/16 CORNER BETWEEN SECTIONS 9 AND 10 WAS SET AT PROPORTIONATE MEASURE BETWEEN THE WEST 1/4 CORNER AND THE S.W. SECTION CORNER. THE WEST 1/16 CORNER BETWEEN SECTIONS 10 AND 15 WAS SET AT PROPORTIONATE MEASURE BETWEEN THE SOUTH 1/4 CORNER AND THE S.W. SECTION CORNER. A CLOSED MEANDER TRANSIT AND E.D.M. TRAVERSE WAS RUN BETWEEN ALL FOUND CORNERS AND USED FOR CONTROL. A CLOSED MEANDER TRANSIT TRAVERSE WAS RUN AROUND THE WEST 1/2 OF SECTION 10. OFFSETS WERE COMPUTED FROM THIS MEANDER TRAVERSE TO THE TRUE PROPERTY LINE.

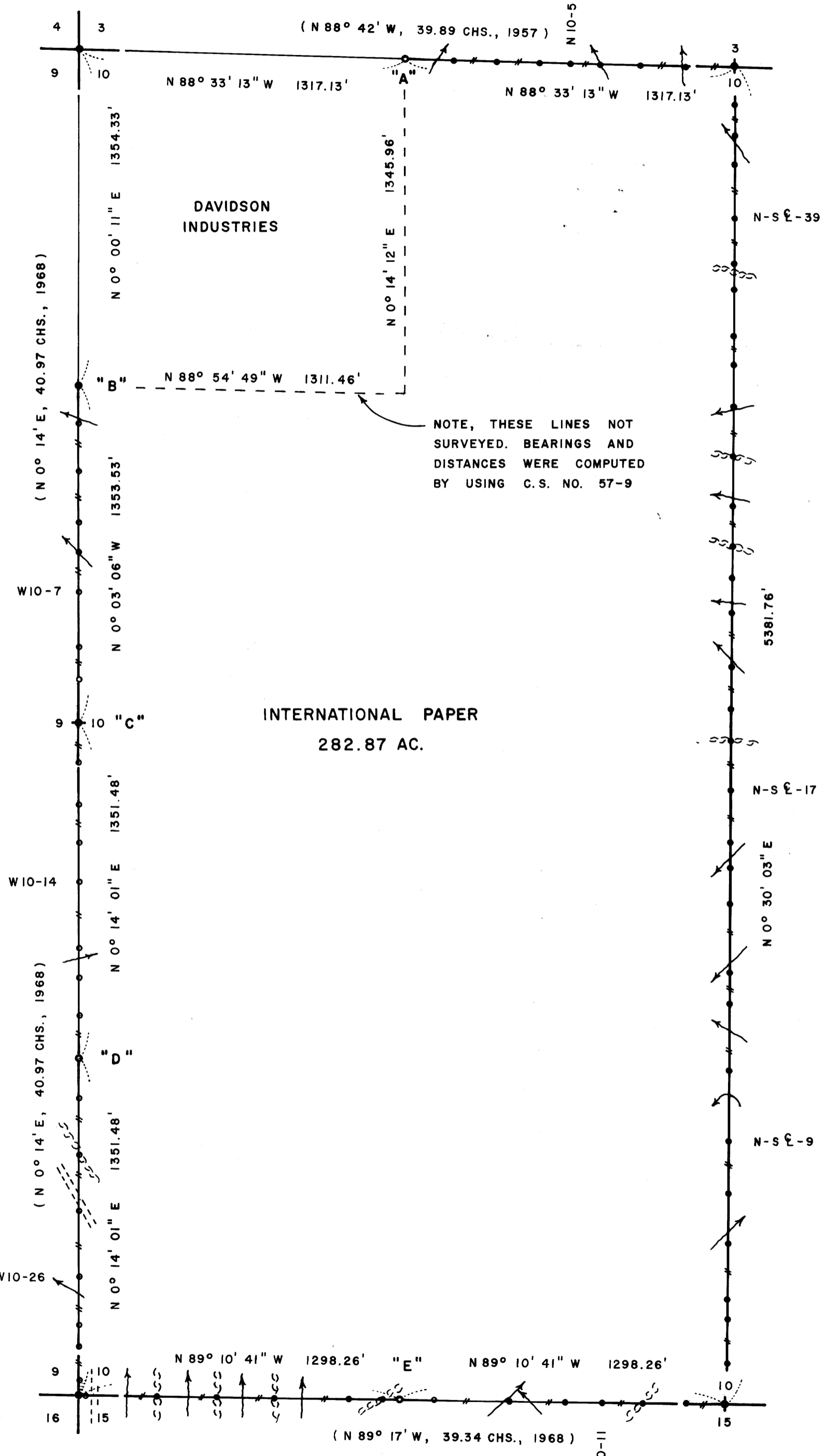
LEGEND

- CORNERS FOUND AND USED FOR CONTROL
- CORNERS SET
- LINE MARKED WITH RED PAINTED BLAZES, 1/2" x 60" IRON RODS AND RED RIBBON.
- () DATA OF RECORD, G.L.O.
- BASIS OF BEARING, SOLAR OBSERVATION
- DISTANCE TO BEARING TREES ARE CENTER MEASURE
- ALL BEARING TREES ARE SCRIBED
- SCALE 1" = 400'



LOCATION OF 1/2" IRON RODS

S 1/4 COR.		N 1/16 COR.		
N-S E-2	175'	W 10-1	151'	SOUTH
N-S E-3	348'	W 10-3	343'	SOUTH
N-S E-4	429'	W 10-5	552'	SOUTH
N-S E-6	657'	W 10-6	672'	SOUTH
N-S E-8	855'	W 10-7	831'	SOUTH
N-S E-9	1066'	W 10-8	1050'	SOUTH
N-S E-10	1350'	W 10-9	1181'	SOUTH
N-S E-11	1622'	W 1/4 COR.	1354'	SOUTH
N-S E-12	1744'	W 10-11	154'	SOUTH
N-S E-13	2021'	W 10-12	331'	SOUTH
N-S E-14	2166'	W 10-13	480'	SOUTH
N-S E-15	2268'	W 10-14	640'	SOUTH
N-S E-17	2473'	W 10-15	904'	SOUTH
N-S E-19	2682'	W 10-16	1024'	SOUTH
N-S E-21	2808'	W 10-18	1178'	SOUTH
N-S E-23	2972'	S 1/16 COR.	1351'	SOUTH
N-S E-25	3188'	W 10-21	1508'	SOUTH
N-S E-26	3330'	W 10-23	1740'	SOUTH
N-S E-28	3457'	W 10-25	1962'	SOUTH
N-S E-30	3615'	W 10-26	2227'	SOUTH
N-S E-32	3825'	W 10-27	2419'	SOUTH
N-S E-33	4015'	W 10-28	2505'	SOUTH
N-S E-34	4184'	W 10-29	2646'	SOUTH
N-S E-35	4302'	S.W. COR.	2703'	SOUTH
N-S E-36	4484'	S 10-1	29'	EAST
N-S E-38	4590'	S 10-2	307'	EAST
N-S E-39	4778'	S 10-3	566'	EAST
N-S E-41	4991'	S 10-4	791'	EAST
N-S E-42	5103'	S 10-5	1088'	EAST
N-S E-44	5231'	S 10-6	1223'	EAST
N 1/4 COR.	5382'	W 1/16 COR.	1298'	EAST
N 10-2	203'	S 10-8	1428'	EAST
N 10-3	375'	S 10-9	1737'	EAST
N 10-4	539'	S 10-10	1958'	EAST
N 10-5	660'	S 10-11	2105'	EAST
N 10-6	786'	S 10-12	2268'	EAST
N 10-7	954'	S 10-14	2445'	EAST
N 10-8	1126'	S 1/4 COR.	2596'	EAST
W 1/16 COR.	1317'	WEST		



NOTE, THESE LINES NOT SURVEYED. BEARINGS AND DISTANCES WERE COMPUTED BY USING C.S. NO. 57-9

INTERNATIONAL PAPER
 282.87 AC.

S.W. SECTION CORNER

FD, 1968 B.L.M. BRASS CAP
 15" FIR, N 40 1/2° E, 12.3' (SCAR VIS.), 1968 B.T.
 18" FIR STUB, S 25° E, 27.9' (SCRIBE VIS.), 1968 B.T.
 23" FIR, S 34 1/2° W, 17.3' (SCAR VIS.), 1968 B.T.
 23" FIR, N 39 1/2° W, 6.6' (SCAR VIS.), 1968 B.T.

SOUTH 1/4 CORNER

FD, 1968 B.L.M. BRASS CAP
 14" FIR, S 23° E, 25.8' (SCAR VIS.), 1968 B.T.
 16" FIR, N 02 1/2° E, 17.1' (SCAR VIS.), 1968 B.T.

MAP FILE M88-21