

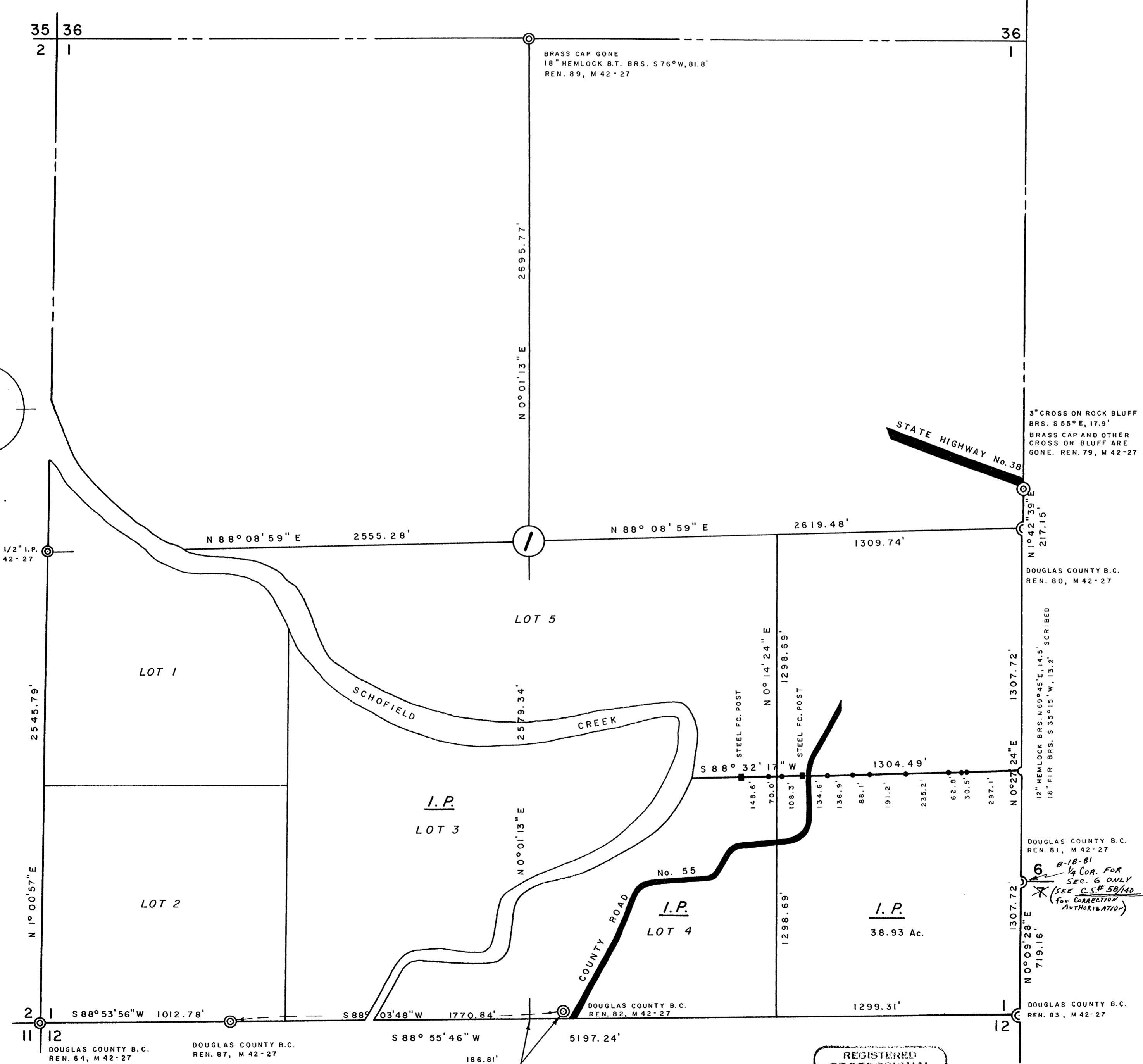
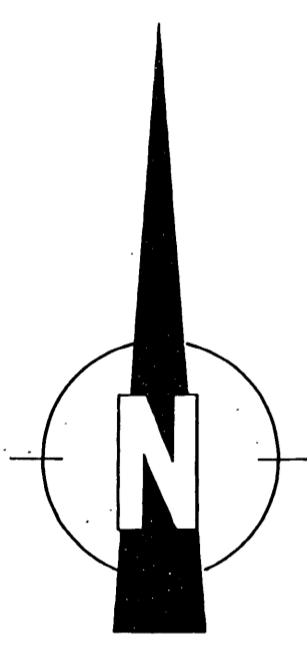
MAP FILE M88-17

COUNTY SURVEYORS FILE DATA
DO NOT REMOVE FROM OFFICE

FILED
RECEIVED JR
JUL 14 1981
COUNTY SURVEYOR
DOUGLAS COUNTY, ORE.

PROPERTY SURVEY FOR INTERNATIONAL PAPER CO.

SEC. 1, T22S, R12W
SCALE 1" = 400' MAY 1981



LEGEND

CORNERS FOUND ●

SET 1 1/4" x 36" I.P. / STAMPED BRASS CAP ○

PROPERTY LINE ESTABLISHED, 1/2" x 60" I.R.'S WITH ATTACHED ALUMINUM SIGNS

NOTES

1. BASIS FOR BRG. M 86-59 (TRUE FROM SOLAR OBSERVATION) VAR. 19° 00'
2. DISTANCES ARE TAKEN TO A 50 d NAIL IN THE CENTER OF EACH BEARING TREE.
3. THIS SURVEY WAS MADE IN ACCORDANCE WITH THE B.L.M. MANUAL OF SURVEY INSTRUCTIONS.

REGISTERED
PROFESSIONAL
LAND SURVEYOR

Richard J. Hintz

OREGON
MAY 15, 1980
RICHARD J. HINTZ
497

RICHARD J. HINTZ
1890 N. 14 TH ST.
COOS BAY, OREGON

MAP FILE M88-17

CS FILE NOT SCANNED

FILE CONTAINS CORRISPONDENCE

NO NARRATIVE OR

CORNER INFORMATION