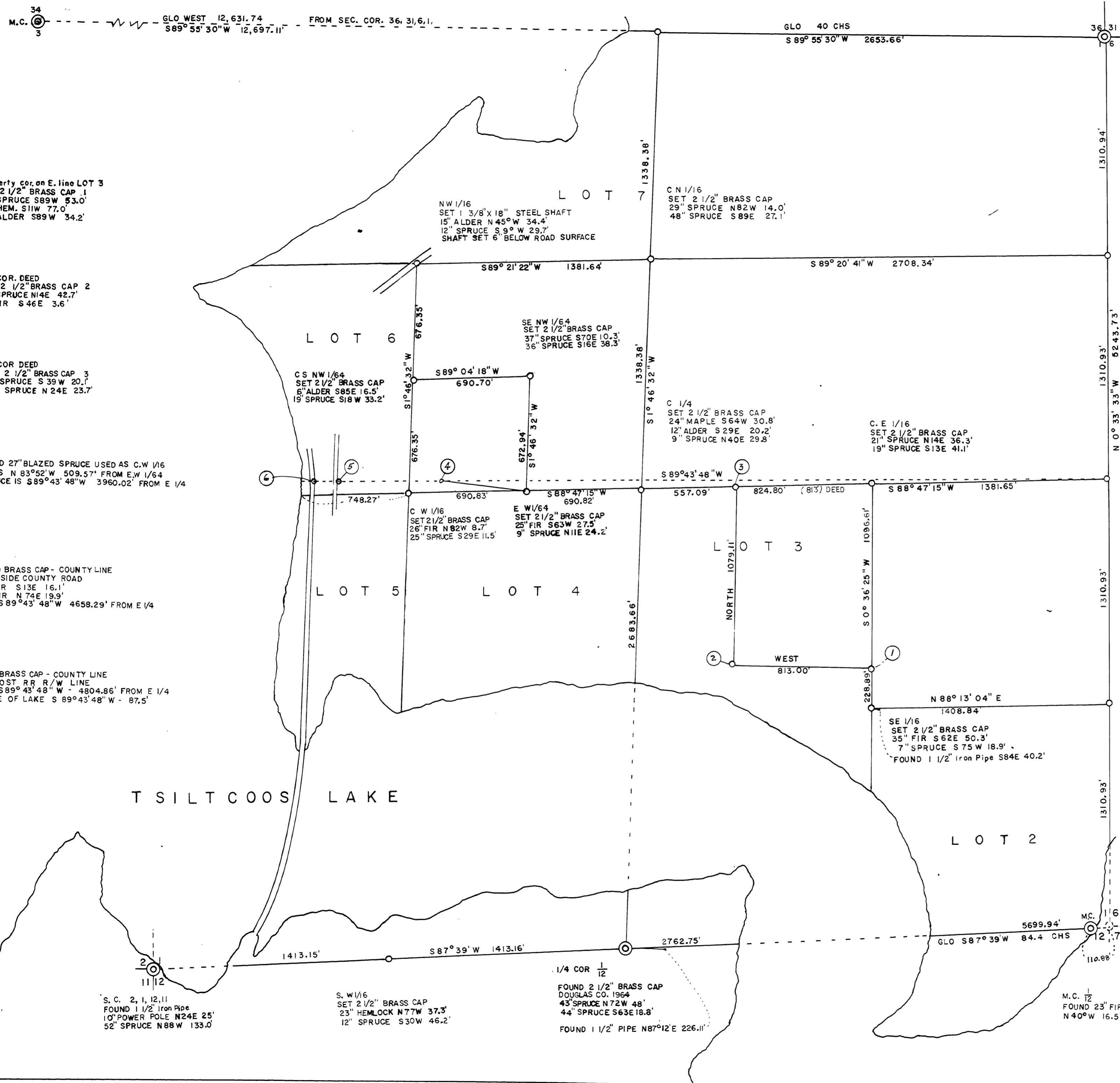


RECEIVED *JK*  
 JUL 14 1981  
 COUNTY SURVEYOR  
 DOUGLAS COUNTY, ORE

C.S. FILE 58-12380  
 MAP FILE M88-13



① Property cor. on E. line LOT 3  
 SET 2 1/2" BRASS CAP .1  
 32" SPRUCE S89W 53.0'  
 36" HEM. S11W 77.0'  
 14" ALDER S89W 34.2'

② SW COR. DEED  
 SET 2 1/2" BRASS CAP 2  
 18" SPRUCE N14E 42.7'  
 6" FIR S46E 3.6'

③ NW COR. DEED  
 SET 2 1/2" BRASS CAP 3  
 16" SPRUCE S39W 20.1'  
 36" SPRUCE N24E 23.7'

④ FOUND 27" BLAZED SPRUCE USED AS C.W 1/16  
 BEARS N 83°52' W 509.57' FROM E.W 1/64  
 SPRUCE IS S89°43' 48" W 3960.02' FROM E 1/4

⑤ FOUND BRASS CAP - COUNTY LINE  
 EAST SIDE COUNTY ROAD  
 15" FIR S13E 16.1'  
 38" FIR N74E 19.9'  
 CAP S89°43' 48" W 4658.29' FROM E 1/4

⑥ FOUND BRASS CAP - COUNTY LINE  
 5X5 POST RR R/W LINE  
 CAP S89°43' 48" W - 4804.86' FROM E 1/4  
 SHORE OF LAKE S 89°43' 48" W - 87.5'

SECTION CORNER 36.31.6.1  
 FOUND BRASS CAP SET BY DOUGLAS COUNTY  
 40" FIR N50E 7.5'  
 27" FIR S50E 10.6'  
 38" FIR S35W 15.0'

E. N 1/16  
 SET 2 1/2" BRASS CAP  
 24" MAPLE S83°E 47.4'  
 20" FIR S24°E 58.3'

REGISTERED  
 P. OF. S. ONAL  
 LAND SURVEYOR  
*Perry G. Fox*  
 OREGON  
 OCTOBER 24, 1977  
 PERRY G. FOX  
 1457

11832 ALDER  
 MAPLETON, OR. 97453

BASIS OF BEARING: SOUTH LINE Sec. 1 S87° 39' W  
 SCALE 1" = 400'  
 BEARING TREE DISTANCES WERE CENTER MEASURE  
 AND BEARINGS WERE MAGNETIC VAR. 19° 20'

- ⊙ CORNERS USED FOR CONTROL
- CORNERS SET THIS SURVEY

SURVEY OF  
 SECTION 1, T20S, R12W, W.M.  
 LANE COUNTY, OREGON  
 DOUGLAS COUNTY, OREGON  
 FOR

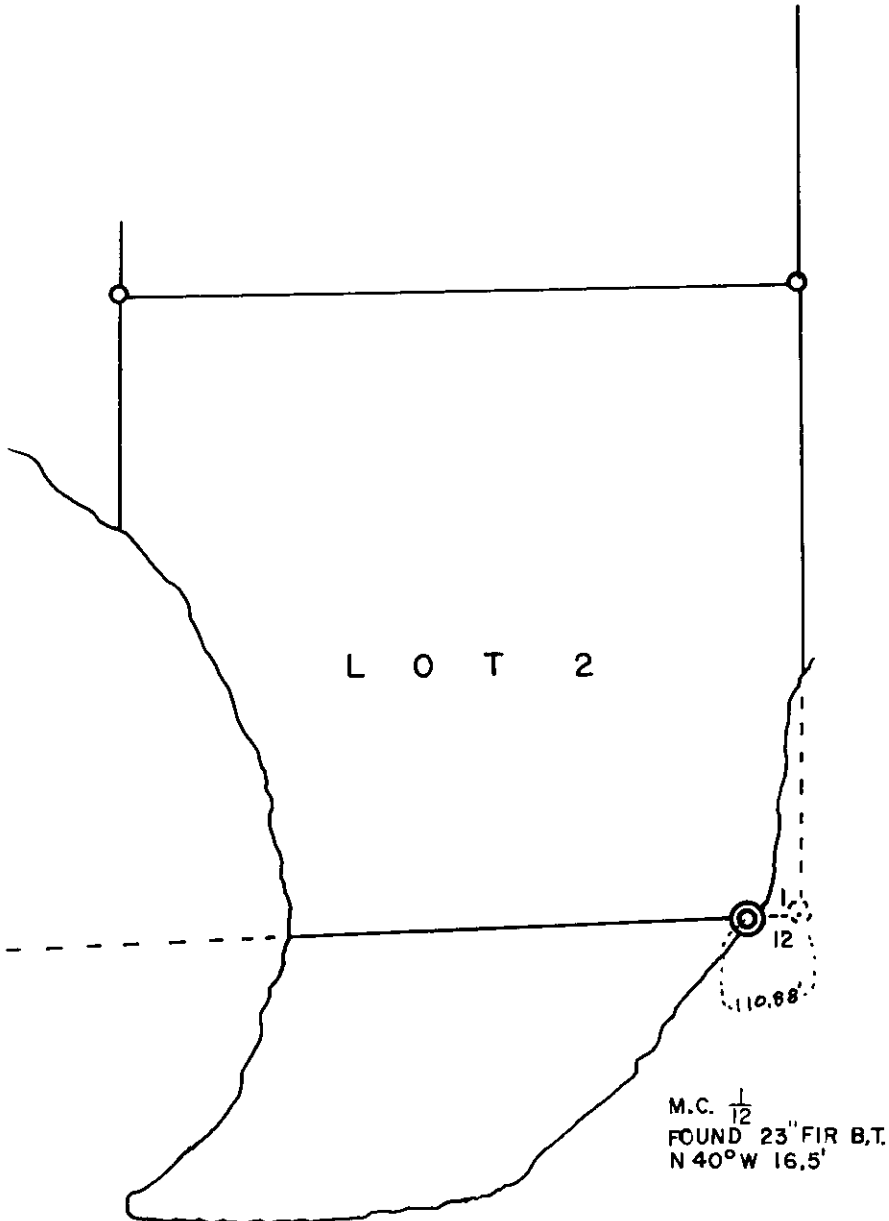
DAVIDSON INDUSTRIES, INC.  
 BY  
 PERRY FOX  
 JUNE 1981

SEE C.S. 58-1238  
 FOR CORRECTION  
 8/6/81 J.R.

DO NOT REMOVE FROM OFFICE

File: M 88-13

# SE CORNER SECTION 1, T20S, R12W, W.M.



This is a correction to Douglas County survey  $\left\{ \begin{matrix} CS 58/238N \\ M88-13 \end{matrix} \right\}$   
 This correction is to change Survey Map at the Southeast corner of Section 1, T20S, R12W, W.M. The map shows the section corner as a four-way  $\frac{116}{127}$  and the corner is actually a two-way corner  $\frac{1}{12}$

FILED  
 RECEIVED ✓  
 AUG 6 1981  
 COUNTY SURVEYOR  
 DOUGLAS COUNTY, ORE.

REGISTERED  
 PROFESSIONAL  
 LAND SURVEYOR

*Perry G. Fox*

OREGON  
 OCTOBER 20, 1977  
 PERRY G. FOX  
 1457

11832 ALDER  
 MAPLETON, OR. 97453

JULY 30, 1981

M88-13

FILED ✓  
RECEIVED ✓

JUL 14 1981

SURVEY OF SECTION 1, T20S., R12W., W.M.  
JUNE 1981

COUNTY SURVEYOR  
DOUGLAS COUNTY, ORE.

The purpose of the survey was to establish property corners for Davidson Industries, Inc. The deeds called for subdivision corners and metes and bounds description from a Lot cor.

The government plot shows that parts of the NW quarter, SW quarter and SE quarter fall in the lake. The section has 7 lots, 4 regular forties, 2 oversize forties.

The North 1/4 cor and accessories could not be found. This corner was set by proportional measurement and Brg established by measuring township line between the M.C. between sections 34 and 3 and the Northeast cor of section 1. The South 1/4 corner was set by Douglas County in 1964.

The NW corner and the West 1/4 cor fall in the lake.

The East and West centerline run on a mean bearing of the North line and South section lines.

The North and South line run between the N1/4 corner and the South 1/4 corner.

The West line of the SE 1/4 NW 1/4 run parallel with the N & S center line.

The North line of the SE 1/4 NW 1/4 ran on mean bearing of the North section line and E & W center line.

The North line of Lot 2 ran on a mean bearing of the E & W center line and South section line.

Equipment used a 20 second Franke Theodolite, M.G.A. 76 laser, prisms, and 200' tape.

REGISTERED  
PROFESSIONAL  
LAND SURVEYOR  
*Perry G. Fox*  
OREGON  
OCTOBER 28, 1977  
PERRY G FOX  
1457

11832 ALDER  
MAPLETON, OR. 97453