

SURVEY LOCATED IN
SECTION 32, T. 21 S., R. 11 W., W.M.
DOUGLAS COUNTY, OREGON

FILED ✓
RECEIVED JWH

SEP 17 1979

COUNTY SURVEYOR
DOUGLAS COUNTY, ORE.

MAP FILE M 78-72

CORNER NOTES:

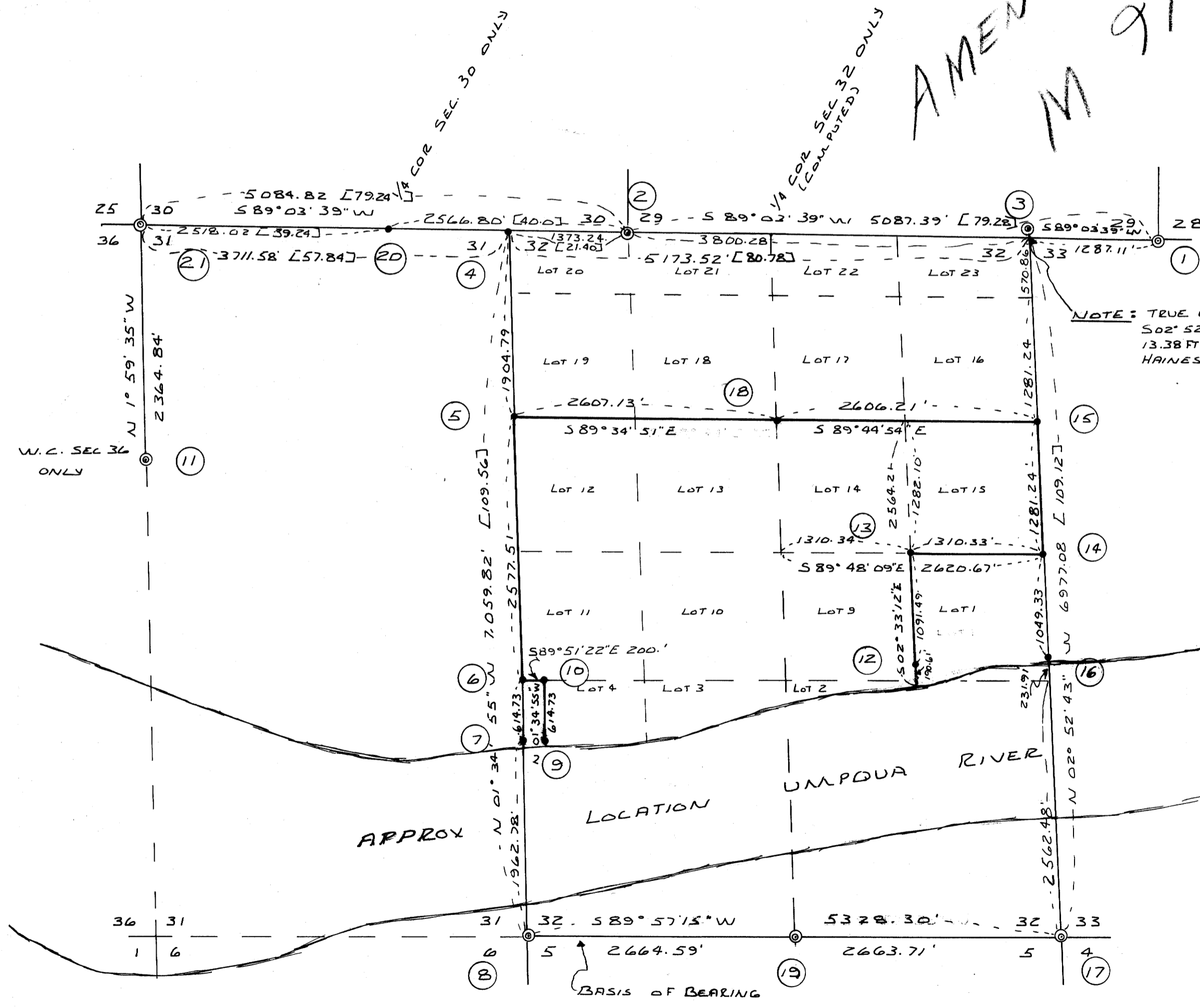
- ① C.C. COMMON TO SECTIONS 29, 28: FOUND ORIG. RED CEDAR BT. NOW 34" N 10° E 23.1 FT. FACE OPEN WITH BRASS WASHER "NO. 238. HAINES": SET 3/8" IRON ROD, NEW BT BEARS; 44" HEMLOCK N 16° W 55.2 FT.
- ② C.C. COMMON TO SECTIONS 29, 30: FOUND I.P.B.C. BY R. HINTZ FROM WHICH: 20" CEDAR S 87° E 106.8 FT., 28" SPRUCE S 52° E 48.4 FT.; 18" MAPLE N 66° 30' W 29.4 FT.
- ③ C.C. COMMON TO SECTIONS 32, 33: FOUND W. HAINES ANGLE IRON FROM WHICH: 27" SPRUCE N 11° W 34.4 FT., 38" ALDER S 42° 30' W (S 24° 30' W RECORDED) 47.1 FT.
- ④ C.C. COMMON TO SECTIONS 31, 32: SET 3/8" IRON ROD IN MOUND OF SANDSTONE; FROM WHICH: 30" MAPLE S 3° E 82.9 FT., 8" ALDER S 39° E 28.2 FT.; 20" W. FIR N 32° 30' W 297.4 FT.
- ⑤ S.W. CORNER LOT 19: SET 3/8" IRON ROD FROM WHICH: W.R.C. S 1° W 64.9 FT. (NOTE: CORNER ON STEEP WEST SLOPE APPROX 50 FT EAST OF SMALL CREEK RUNNING NORTH).
- ⑥ 1/4 CORNER SECTIONS 31, 32: SET 3/8" IRON ROD; FROM WHICH: 28" D. FIR S 82° W 5.4 FT., 40" D. FIR S 61° E 15.3 FT.
- ⑦ MEANDER CORNER SECTION 31, 32: SET 3/8" IRON ROD, FROM WHICH: 14" D. FIR S 55° W 16.8 FT., 12" D. FIR N 87° E 40.7 FT.
- ⑧ SECTION CORNER COMMON TO 31, 32, 5, 6; FOUND DOUGLAS COUNTY B.C. NO BT'S (NOTE: THIS CORNER LIES IN LARGE FIELD SOUTH OF HWY 38).
- ⑨ PROPERTY CORNER: SET 3/8" IRON ROD FROM WHICH: 28" W.R.C. N 68° W 11.0 FT. MKD" PC BT.
- ⑩ PROPERTY CORNER: SET 3/8" IRON ROD IN ROCK OUTLETP FROM WHICH: 40" D. FIR S 86° W 14.2 FT. MKD" PC BT.
- ⑪ W.C. SEC. 36 ONLY: FOUND DOUGLAS COUNTY B.C. FROM WHICH 24" SPRUCE S 22° W 4.6 FT.; 30" SPRUCE S 26° E 20.0 FT.
- ⑫ W.C. BETWEEN LOTS 1, 9: SET 3/8" IRON ROD FROM WHICH: 10" RED ALDER S 38° E 31.2 FT.; 8" WILLOW S 30° E 36.1 FT.
- ⑬ N.W. COR LOT 1: SET 3/8" IRON ROD FROM WHICH BEARS: 22" FIR N 65° E 34.7 FT.; 16" FIR S 40° W 26.0 FT.
- ⑭ S.E. CORNER LOT 15: SET 3/8" IRON ROD FROM WHICH: 28" D. FIR N 8° W 8.7 FT.; 14" W.R.C. S 35° E 16.0 FT.
- ⑮ N. 1/16 CORNER BETWEEN 32, 33: SET 3/8" IRON ROD (APPROX 15 FT EAST OF CREEK) FROM WHICH: 40" W.R.C. S 3° W 73.2 FT., 34" MAPLE N 54° E 124.3 FT.
- ⑯ MEANDER COR. BETWEEN SECTIONS 32, 33: SET, CHIPPED "X" IN ROCK FACE, FROM WHICH: 8" D. FIR N 44° E 10.8 FT., 34" D. FIR EAST 49.3 FT. WITNESS CORNER IS A 3/8" IRON ROD 11.05 FT NORTH OF TRUE CORNER.
- ⑰ SECTION CORNER FOR SECTIONS 32, 33, 45: FOUND DOUGLAS COUNTY BRASS CAP FROM WHICH, LARGE SPRUCE S 4° W 356.5 FT.
- ⑱ C.N. 1/16 CORNER: SET 3/8" IRON ROD FROM WHICH: 24" D. FIR S 28° E 15.9 FT., 24" D. FIR N 30° E 9.25 FT.
- ⑲ 1/4 CORNER SECTIONS 32, 5: FOUND DOUGLAS COUNTY BRASS CAP, NO B.T.'S.
- ⑳ S 1/4 CORNER SECTION 30 ONLY: SET 3/8" IRON ROD APPROX 20 FT. NORTH OF BUTLER CREEK ROAD, FROM WHICH BEARS: 1" PIPE N 72° 56' W 83.35 FT., 20" SPRUCE S 59° 10' W 68.3 FT., 10" ALDER S 62° 40' E 40.5 FT.
- ㉑ SECTION CORNER COMMON TO SECTIONS 25, 30, 31, 36: FOUND DOUGLAS COUNTY BRASS CAP, FROM WHICH BEARS 6" SPRUCE N 55° W 36.8 FT., 22" D. FIR NORTH 32.3 FT., 36" SPRUCE N 48° E 45.5 FT.

SURVEY FOR:

MOORE MILL AND LUMBER CO.
P.O. Box 277
BANDON, OR 97411

SURVEY BY:

STUNTZNER ENGINEERING AND FORESTRY
P.O. Box 118
COOS BAY, OR 97420



AMENDED
M 97-16
BY

REGISTERED
PROFESSIONAL
LAND SURVEYOR
Ronald E. Stuntzner
OREGON
SEPTEMBER 23, 1977
RONALD E. STUNTZNER
1342

LEGEND:

- ⊙ FOUND MONUMENTS
- SET MONUMENTS
- BASIS OF BEARING AND BASIS OF SURVEY: SURVEY BY JAMES W. BYRON DATED FEB-JUNE 1971 - COUNTY SURVEY FILE M 42-27
- [] ORIG. G.L.O. DISTANCES (IN CHAINS)

MAP FILE M 78-72