

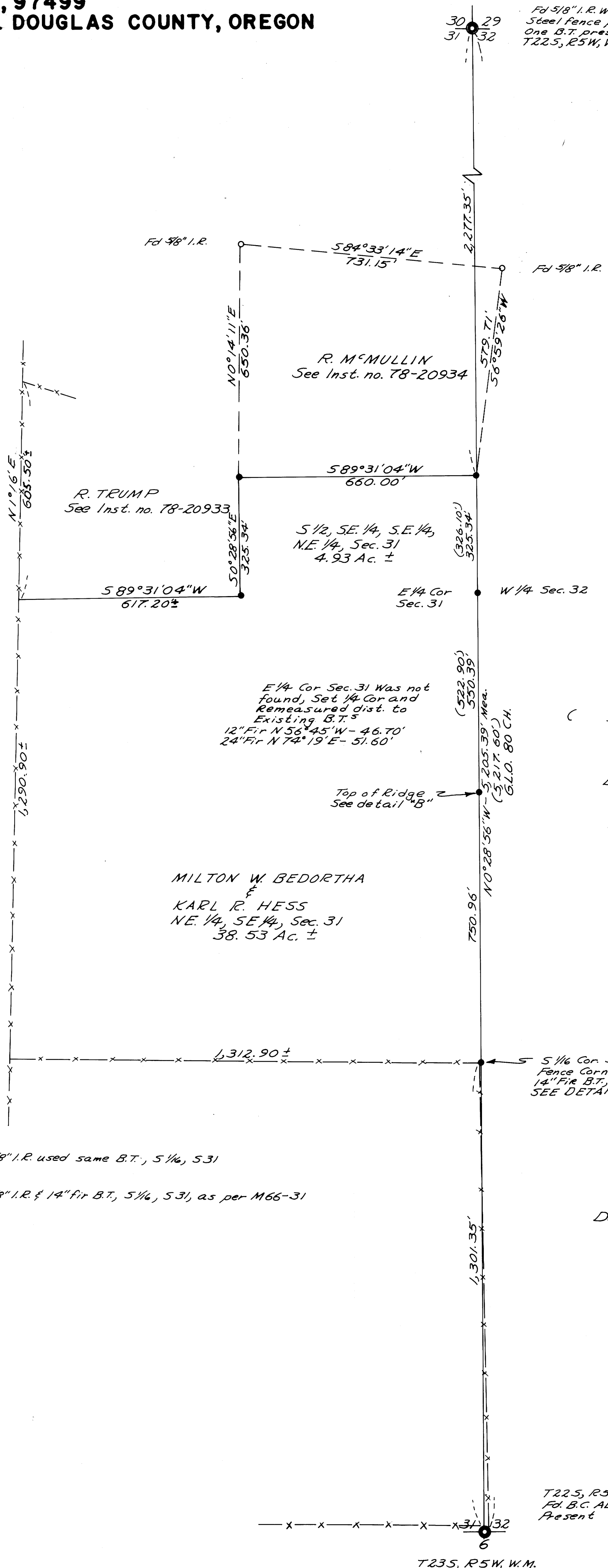
SURVEY OF DEED DESCRIPTION
FOR MILTON W. BEDORTHA & KARL R. HESS
RT. 2 BOX 52, YONCALLA, OR, 97499
IN SEC. 31, T22S, R5W, W.M. DOUGLAS COUNTY, OREGON
BY H.S. SURVEYING
AUGUST 1979

COUNTY SURVEYORS FILE DATA
 DO NOT REMOVE FROM OFFICE

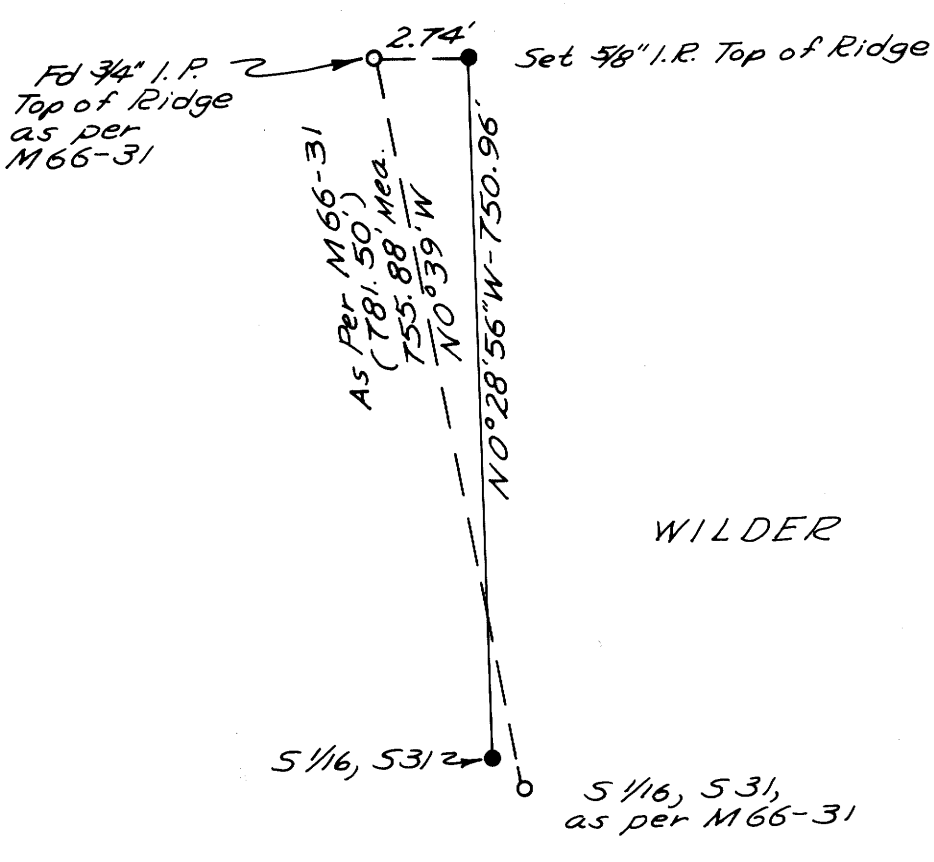
Fd 5/8" I.R. WITH
 Steel fence post,
 One B.T. present
 T22S, R5W, W.M.

FILED
 RECEIVED
 SEP 18 1979
 COUNTY SURVEYOR
 DOUGLAS COUNTY, ORE.

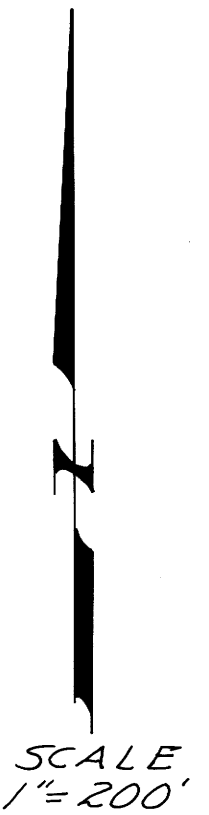
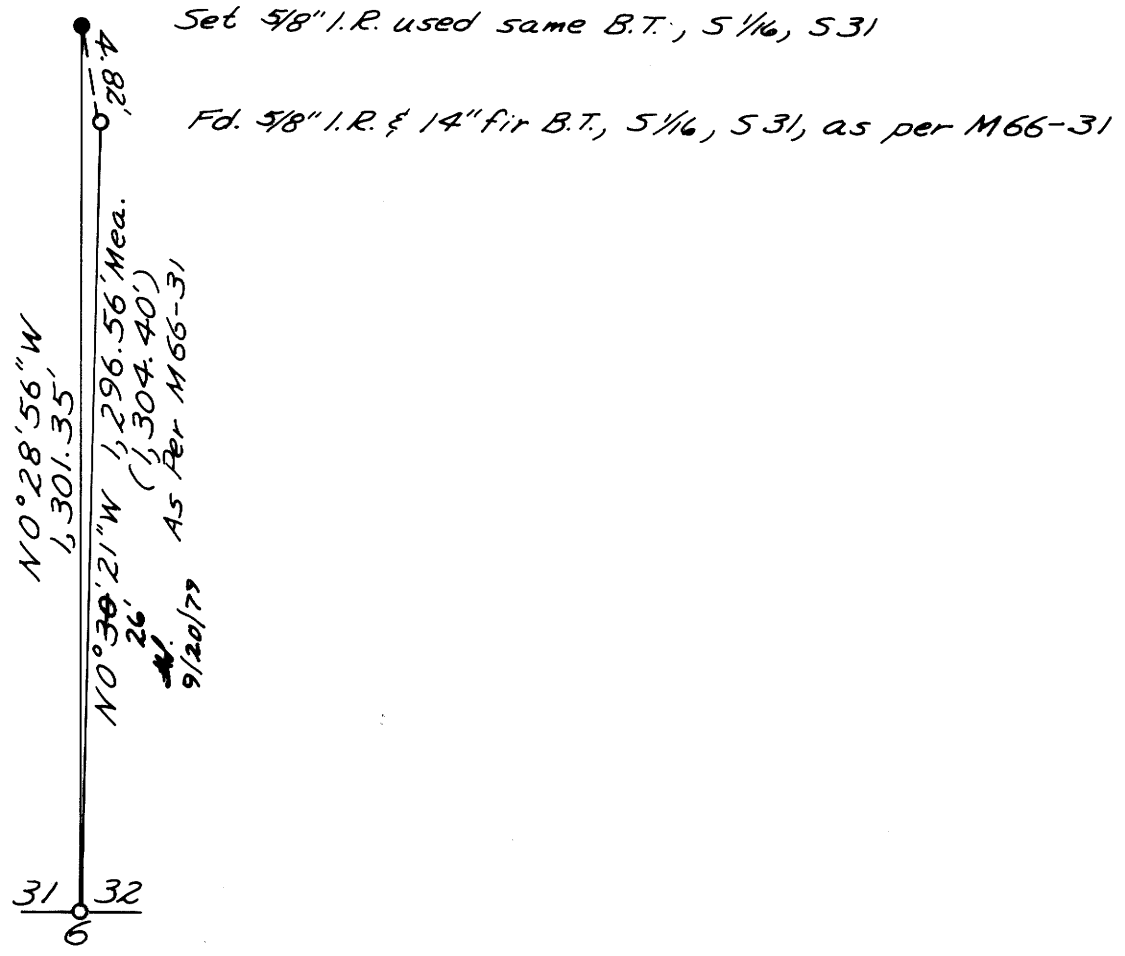
Map File M78-78
 58/208



DETAIL "B"
 Not To Scale



DETAIL "A"
 Not To Scale



- LEGEND**
- SET 5/8" I.R.
 - FOUND AS SHOWN
 - () AS PER MAP FILE M66-31

Base of Bearings
 Based on Solar Observation
 Aug. 25, 1979

Note: See Narrative

REGISTERED
 PROFESSIONAL
 LAND SURVEYOR
 Harold V. Stockhoff
 OREGON
 JULY 14, 1978
 HAROLD V. STOCKHOFF
 1663

DRAIN
 PLYWOOD

T22S, R5W, W.M.
 Fd. B.C. ALL B.T.'S
 Present

T23S, R5W, W.M.