

COUNTY SURVEYORS FILE DATA
DO NOT REMOVE FROM OFFICE

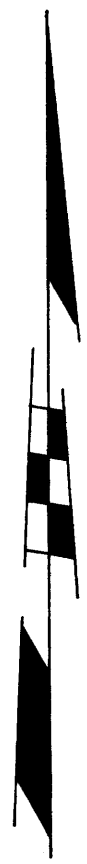
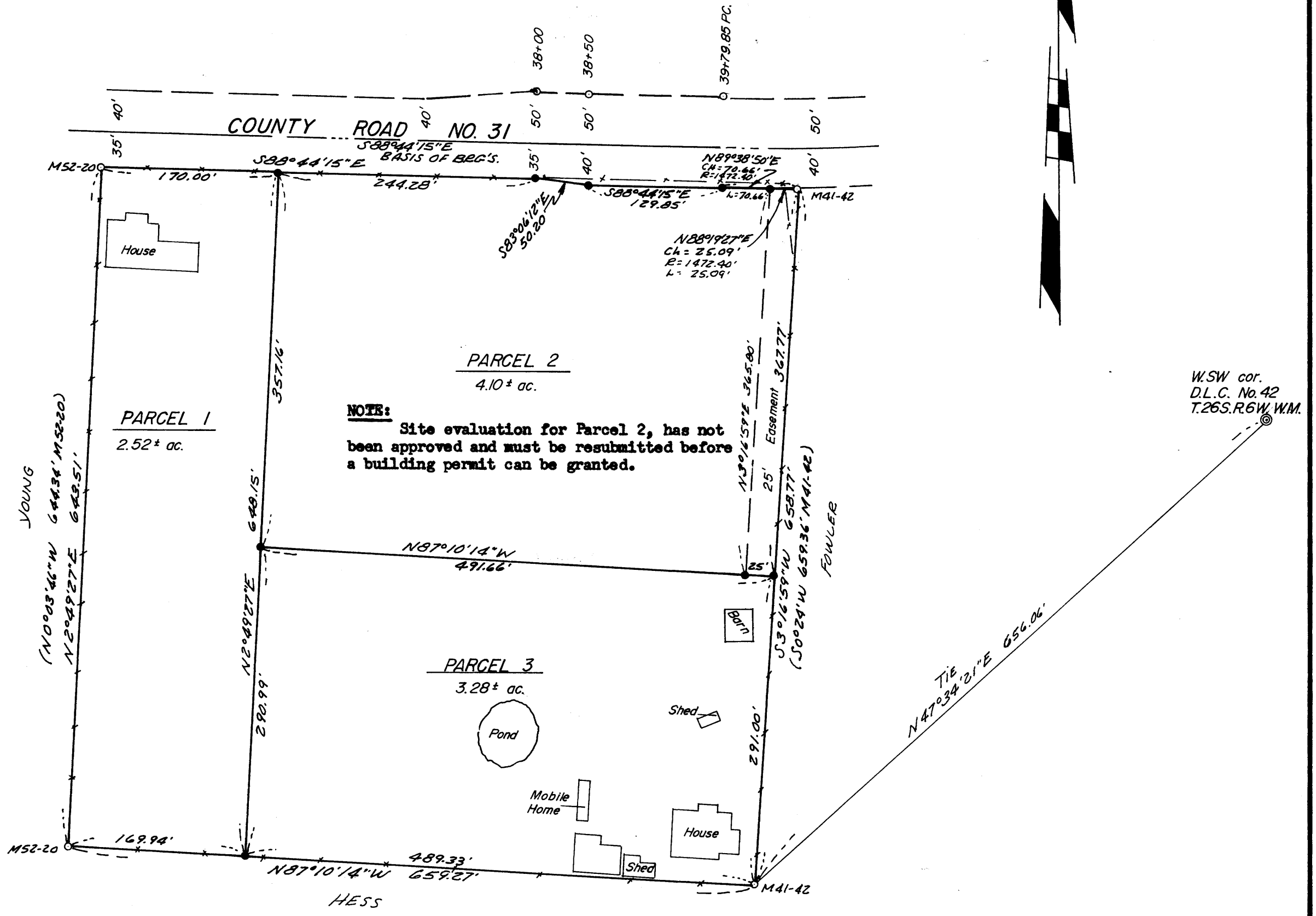
MAJOR LAND PARTITION

IN LOT 2 BLOCK 1 PLAT "B" ROSEBURG HOME ORCHARD TRACTS
SECTION 29 T.26S. R.6W.W.M. — SCALE: 1"=100' — SEPTEMBER 1979

FILED *J*
RECEIVED *JHM*

SEP 12 1979

COUNTY SURVEYOR
DOUGLAS COUNTY, ORE.



REGISTERED
PROFESSIONAL
LAND SURVEYOR

Eugene A. Bloom

OREGON
MAY 13, 1960
EUGENE A. BLOOM
492

LEGEND

- — Set 5/8" iron rod
- — Found 5/8" iron rod
- ⊙ — Found Brass cap

Blw 5 pg. 115-B