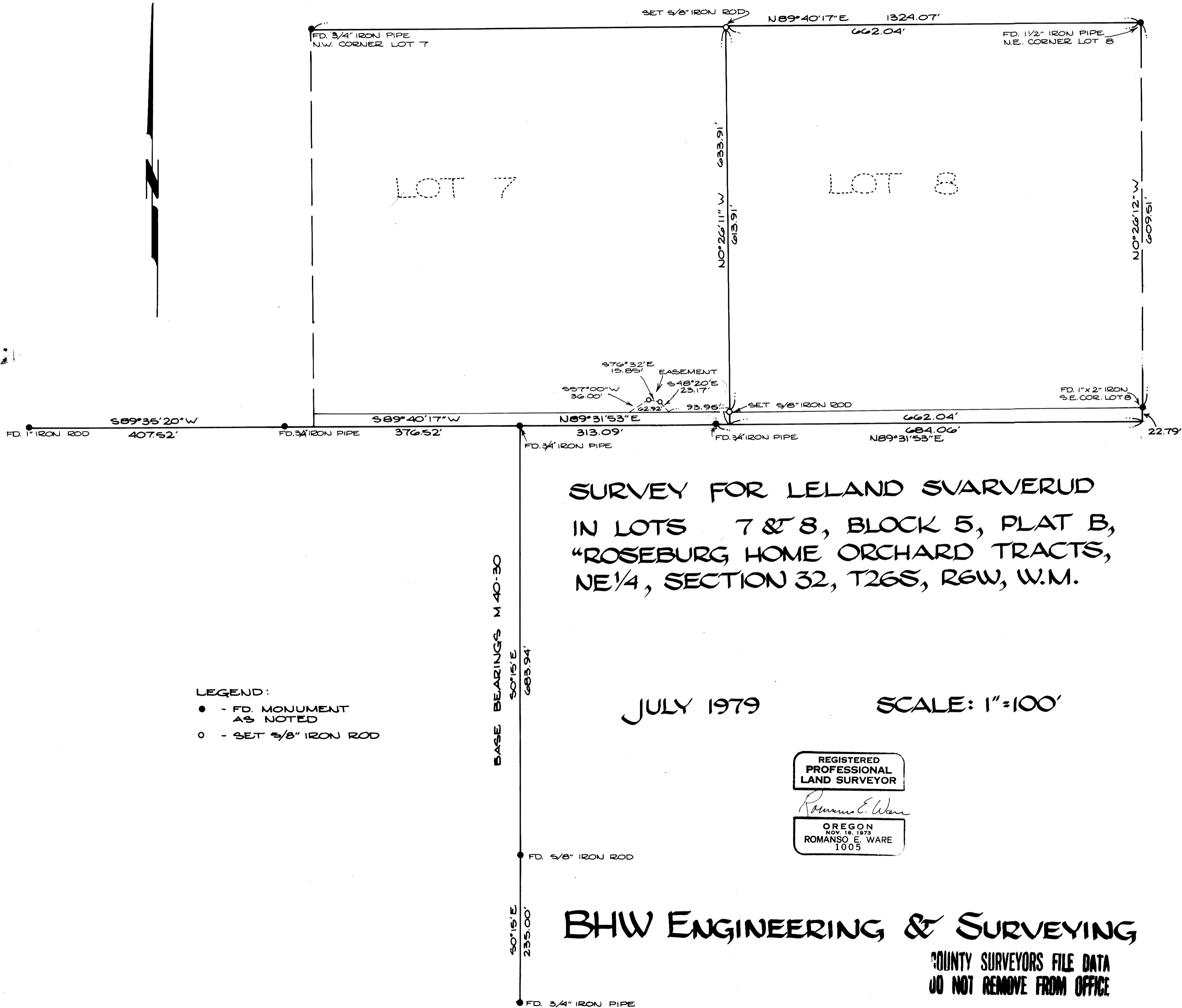


FILED
RECEIVED

AUG 29 1979

COUNTY SURVEYOR
DOUGLAS COUNTY, ORE.

MAP FILE M.78-60



SURVEY FOR LELAND SVARVERUD
IN LOTS 7 & 8, BLOCK 5, PLAT B,
"ROSEBURG HOME ORCHARD TRACTS,
NE 1/4, SECTION 32, T26S, R6W, W.M.

JULY 1979

SCALE: 1"=100'

LEGEND:

- - FD. MONUMENT AS NOTED
- - SET 5/8" IRON ROD

BASE BEARINGS M 40-30
S0°15'E
683.94'

REGISTERED
PROFESSIONAL
LAND SURVEYOR

Romano E. Ware

OREGON
NOV. 18, 1973
ROMANSO E. WARE
1005

BHW ENGINEERING & SURVEYING

COUNTY SURVEYORS FILE DATA
DO NOT REMOVE FROM OFFICE

MAP FILE M.78-60