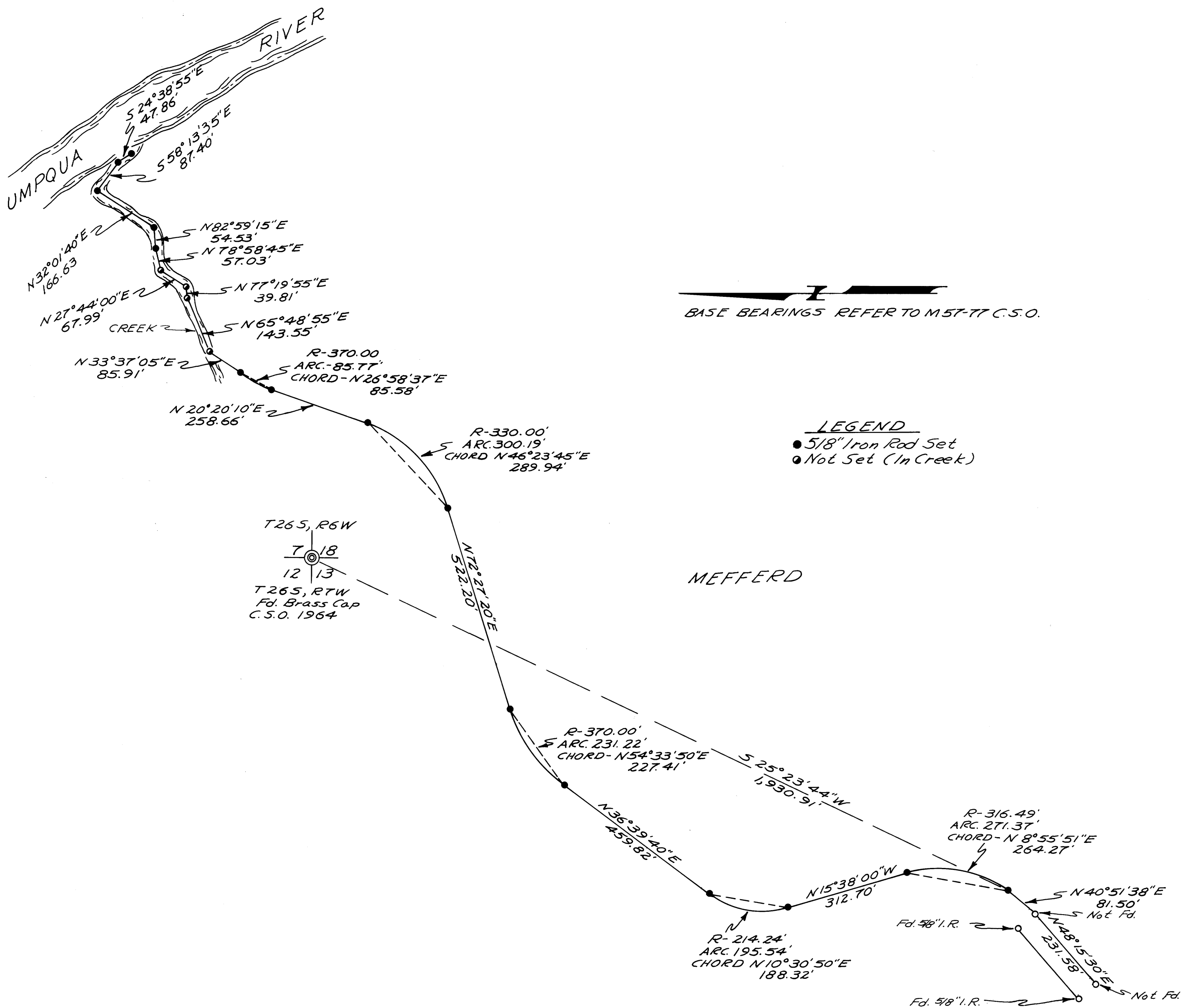


MAP FILE M. 78-6
COUNTY SURVEYORS FILE DATA
DO NOT REMOVE FROM OFFICE

PROPERTY LINE SURVEY FOR VAUGHN MEFFERD

SECTIONS 12 & 13, T26S, R7W, AND SECTIONS
7 & 18, T26S, R6W, W.M., DOUGLAS COUNTY, OREGON
JUNE 1979
BY: ROBERT L. DOLAN
SCALE 1" = 200'

FILED ✓
RECEIVED JRL
JUL 13 1979
COUNTY SURVEYOR
DOUGLAS COUNTY, ORE. JB



REGISTERED
PROFESSIONAL
LAND SURVEYOR
Robert L. Dolan
OREGON
JULY 30, 1976
ROBERT L. DOLAN
1076