

SURVEY FOR PARCELIZATION

IN SEC. 14 T29S R5W WM *SEC. 11*

SURVEYED FOR LONGHORN RANCHES

BY BAUGHMAN TECHNICAL SERVICES JULY 1979

BEARINGS BASED ON NORTH MYRTLE ROAD CENTERLINE

SCALE 1"=300'

LEGEND

⊙ FD. BRASS CAP

○ SET 1/2" I.R.

FILED
RECEIVED

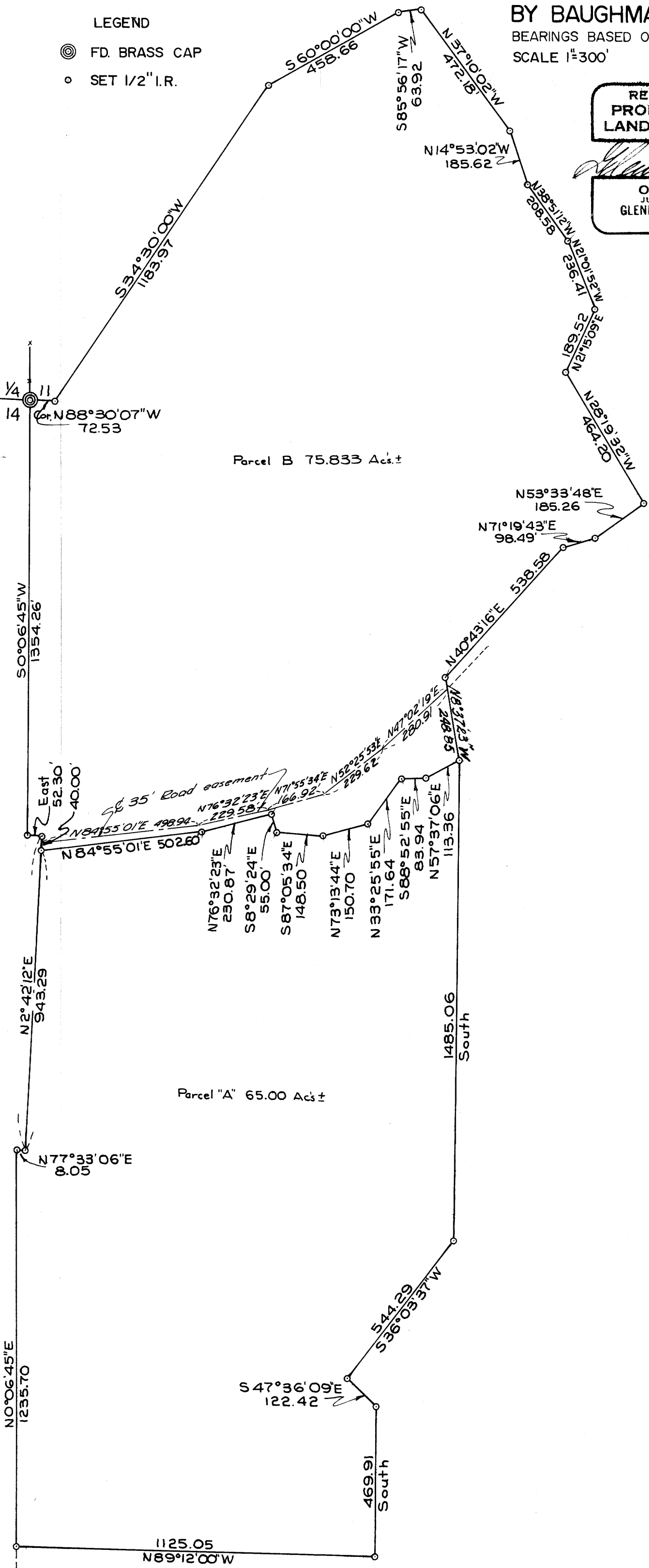
AUG 10 1979

COUNTY SURVEYOR
CLATSOP COUNTY, ORE

REGISTERED
PROFESSIONAL
LAND SURVEYOR

Glenn S. Baughman

OREGON
JULY 14, 1961
GLENN S. BAUGHMAN
536



SURVEYORS FILE DATA
DO NOT REMOVE FROM OFFICE