

SURVEY IN LOT 1, BLOCK 3, P.R. WEAVER 2ND SUBDIVISION

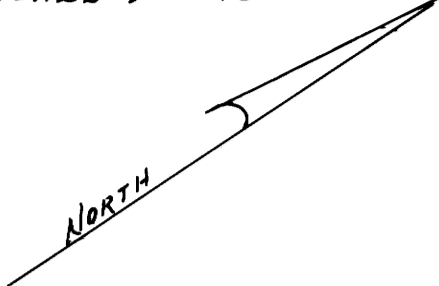
MYRTLE CREEK, ORE.

SEC 28, T29S, R5W, W.M.

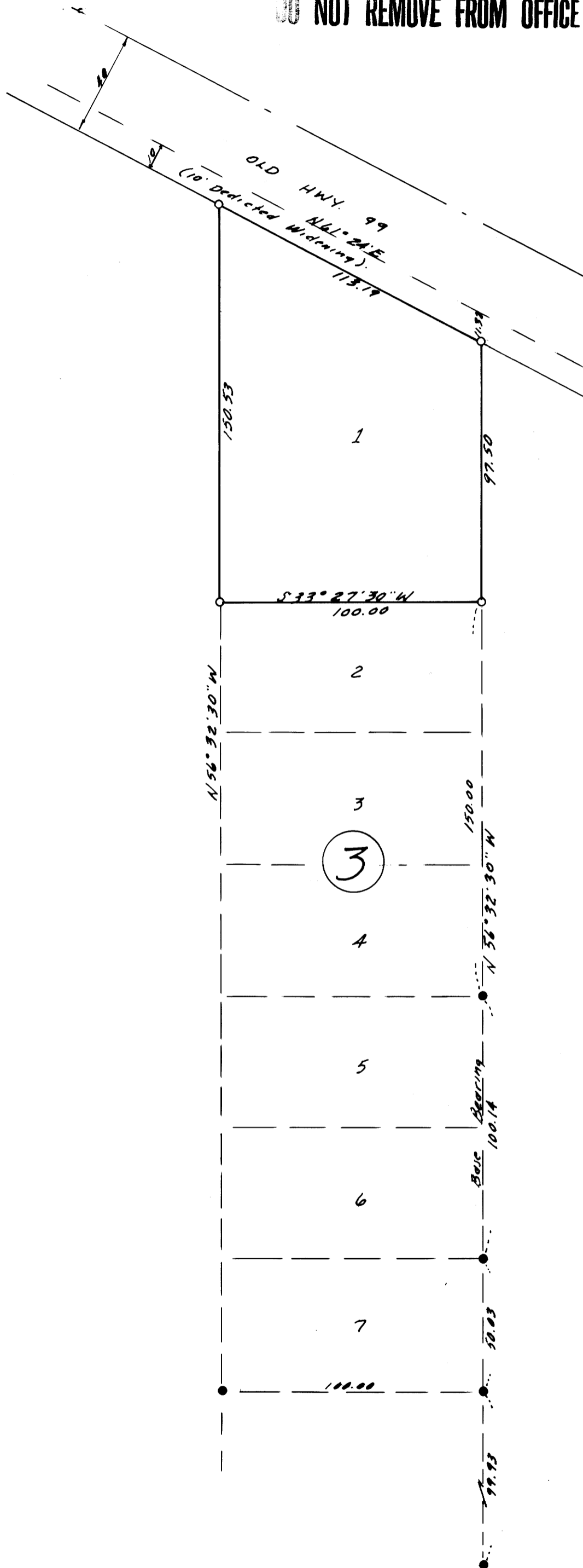
SURVEYED FOR - JOHN MILLER
SURVEYED BY - W.S. BARNES

COUNTY SURVEYORS FILE DATA
DO NOT REMOVE FROM OFFICE

AUG. 1979
SCALE 1" = 40'



FILED *J*
RECEIVED *W.S.*
AUG 7 1979
COUNTY SURVEYOR
DOUGLAS COUNTY, ORE.



- 1/2" Iron Pipes Found.
- 7/8" Iron Rods Set.

REGISTERED
PROFESSIONAL
LAND SURVEYOR

W.S. Barnes

OREGON
SEPT. 23, 1977
WILLIAM S. BARNES
1931