

MAJOR LAND PARTITION

IN SECTION 16, T.26S. R.3W.W.M. - JULY 1979

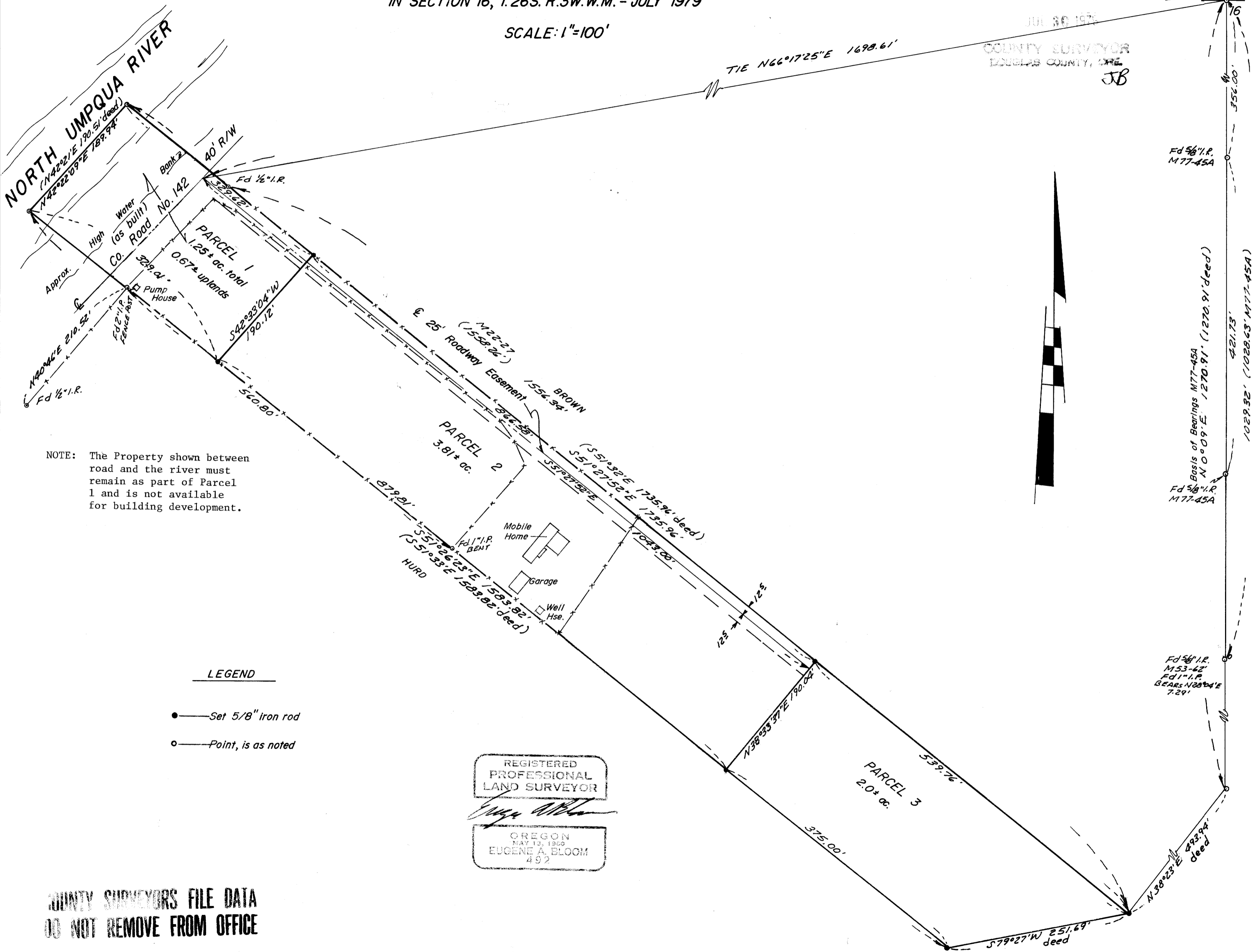
SCALE: 1"=100'

FILED ✓
RECEIVED JAN 1

JUL 30 1979

COUNTY SURVEYOR
DOUGLAS COUNTY, ORE.
JB

Fd. B.C. 29



NOTE: The Property shown between road and the river must remain as part of Parcel 1 and is not available for building development.

LEGEND

- — Set 5/8" iron rod
- — Point, is as noted

REGISTERED
PROFESSIONAL
LAND SURVEYOR

Eugene A. Bloom

OREGON
MAY 13, 1960
EUGENE A. BLOOM
492

COUNTY SURVEYORS FILE DATA
DO NOT REMOVE FROM OFFICE

HALL

SHEET 2 of 2

F.B.6

105-79

MAP FILE M-78-208

MAP FILE M-78-208