

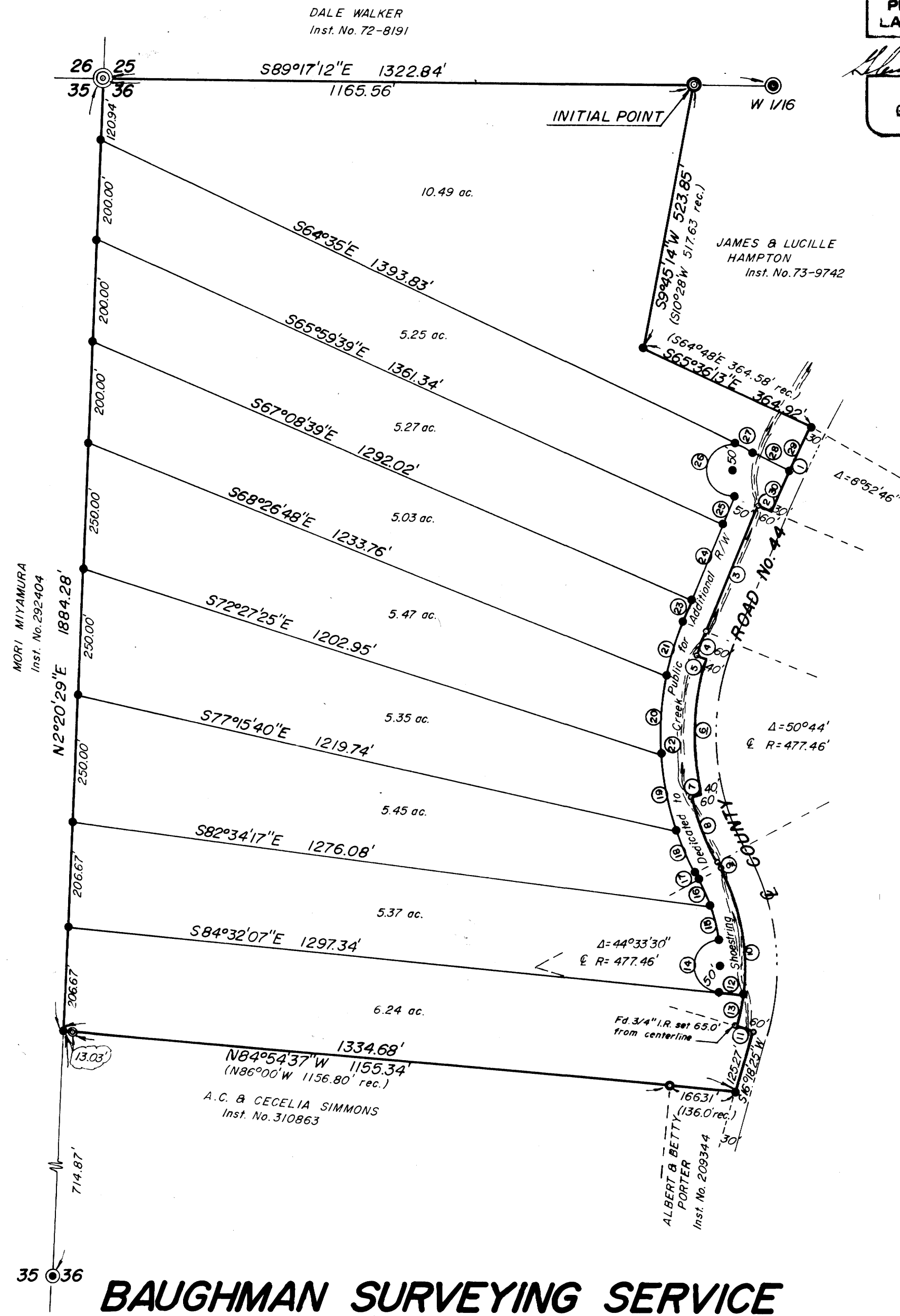
SURVEY FOR KIN LANCASTER SITUATED IN SECTION 36, T.30S., R.6W.W.M.

DECEMBER 1973

SCALE: 1"=200'

FILED
RECEIVED
DEC 22 1977
COUNTY SURVEYOR
DOUGLAS COUNTY, ORE

REGISTERED
PROFESSIONAL
LAND SURVEYOR
Glenn S. Baughman
OREGON
JULY 14 1967
GLENN S. BAUGHMAN
536



	Radius	Length	L.C.	Bearing	Distance
1	1557.89'	187.06'	186.94'	S25°55'18"W	
2				N67°31'05"W	30.00'
3				S22°28'55"W	268.94'
4	537.46'	54.33'	54.30'	S19°35'11"W	
5				S73°18'34"E	20.00'
6	517.46'	270.94'	267.85'	S 1°41'27"W	
7				S76°41'28"W	20.00'
8	537.46'	140.17'	139.77'	S20°46'48"E	
9				S28°15'05"E	12.53'
10	417.46'	324.65'	316.54'	S 5°58'20"E	
11				S73°41'35"E	30.00'
12				N83°02'33"W	50.00'
13	417.46'	68.12'	68.05'	N11°37'56"E	
14	50.00'	150.27'	99.77'	N 0°50'41"W	
15	367.46'	67.37'	67.28'	N13°53'57"W	
16	367.46'	58.36'	58.30'	N23°42'06"W	
17				N28°15'05"W	12.53'
18	587.46'	89.12'	89.03'	N23°54'20"W	
19	587.46'	160.00'	159.51'	N11°45'27"W	
20	587.46'	160.00'	159.51'	N3°50'51"E	
21	587.46'	111.06'	110.90'	N17°03'58"E	
22	587.46'	520.17'	503.35'	N2°53'05"W	
23				N22°28'55"E	48.94'
24				N22°28'55"E	160.00'
25				N22°28'55"E	60.00'
26	50.00'	157.08'	100.00'	N0°19'16"E	
27	50.00'	41.47'	40.29'	S65°55'01"E	
28				S64°18'58"E	80.00'
29	1557.89'	99.99'	99.98'	N27°31'21"E	
30	1557.89'	87.07'	87.06'	N24°04'58"E	

- LEGEND**
- Found Brass cap, 1/4 corner
 - ⊙ Found Brass cap, 1/16th corner
 - Found 3/4" iron rod
 - Found 1/2" iron rod
 - ⊙ Found Brass cap, section corner
 - Set 5/8" iron rod
 - ⊙ Set 2" galv. iron pipe

BAUGHMAN SURVEYING SERVICE