

SURVEY TO SET PROPERTY CORNERS

SITUATE IN SECTION 21, T.26S., R.4W.W.M.

FOR: **KENT BAYLISS**

BY: **BAUGHMAN SURVEYING SERVICE**

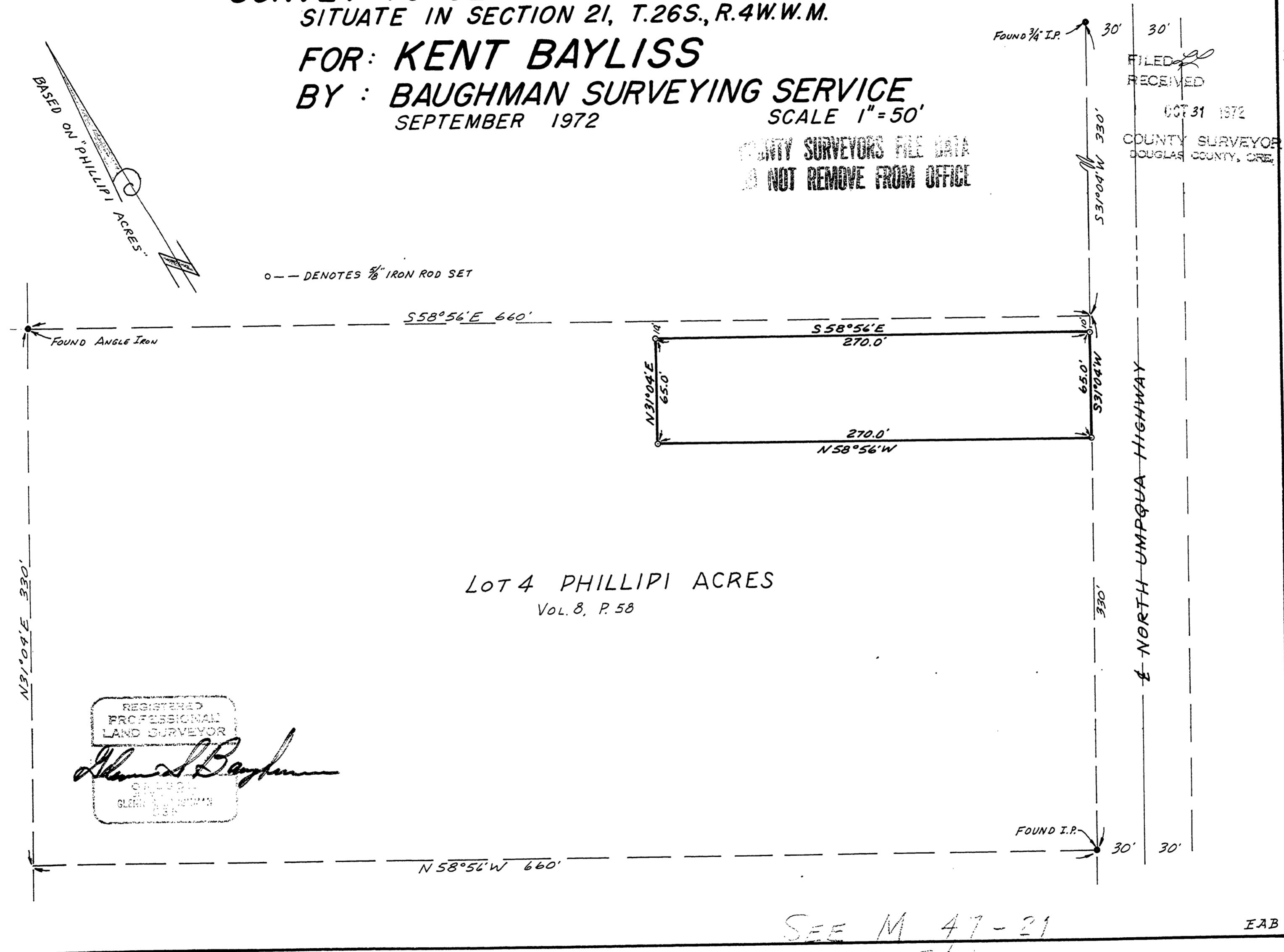
SEPTEMBER 1972

SCALE 1" = 50'

COUNTY SURVEYORS FILE DATA
DO NOT REMOVE FROM OFFICE

BASED ON 'PHILLIPI ACRES'

o-- DENOTES 3/8" IRON ROD SET



LOT 4 PHILLIPI ACRES
VOL. 8, P. 58

REGISTERED
PROFESSIONAL
LAND SURVEYOR
Thomas S. Baughman
OREGON
LICENSE NO. 12345

FILED
RECEIVED
OCT 31 1972
COUNTY SURVEYOR
DOUGLAS COUNTY, ORE.

MAP FILE M. 46 - 16

SEE M 47-21
NEW ROAD R/W. 12/72

EAB

