

SURVEY TO LOCATE PROPERTY LINES IN SECTION 21, T.28S, R.6 W., W.M., WINSTON, DOUGLAS COUNTY, OREGON FOR REX STEVENS BY HERBERT L. NORTHCRAFT SCALE 1" = 30'

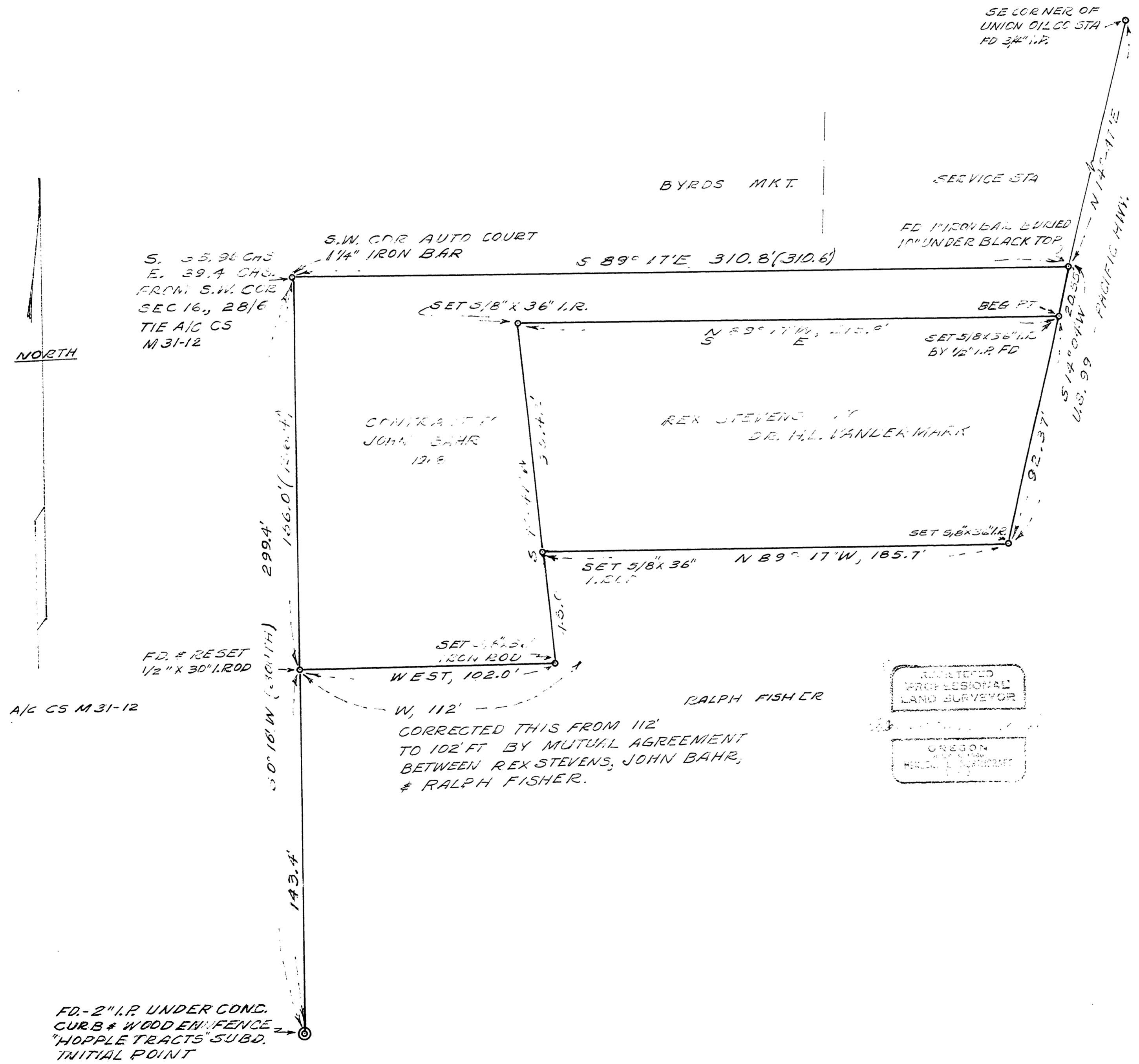
FILED
RECEIVED

JUL 5 1972

COUNTY SURVEYOR
DOUGLAS COUNTY, ORE.

MAP FILE M.46-6

JUNE, 1972



MAP FILE M.46-6

