

SURVEY IN SECTION 22, T25S, R5W, W.M.

Surveyed For Hugh Wahl by Victor M. McLind

August 1972

Scale: 1"=100'

FILED  
RECEIVED

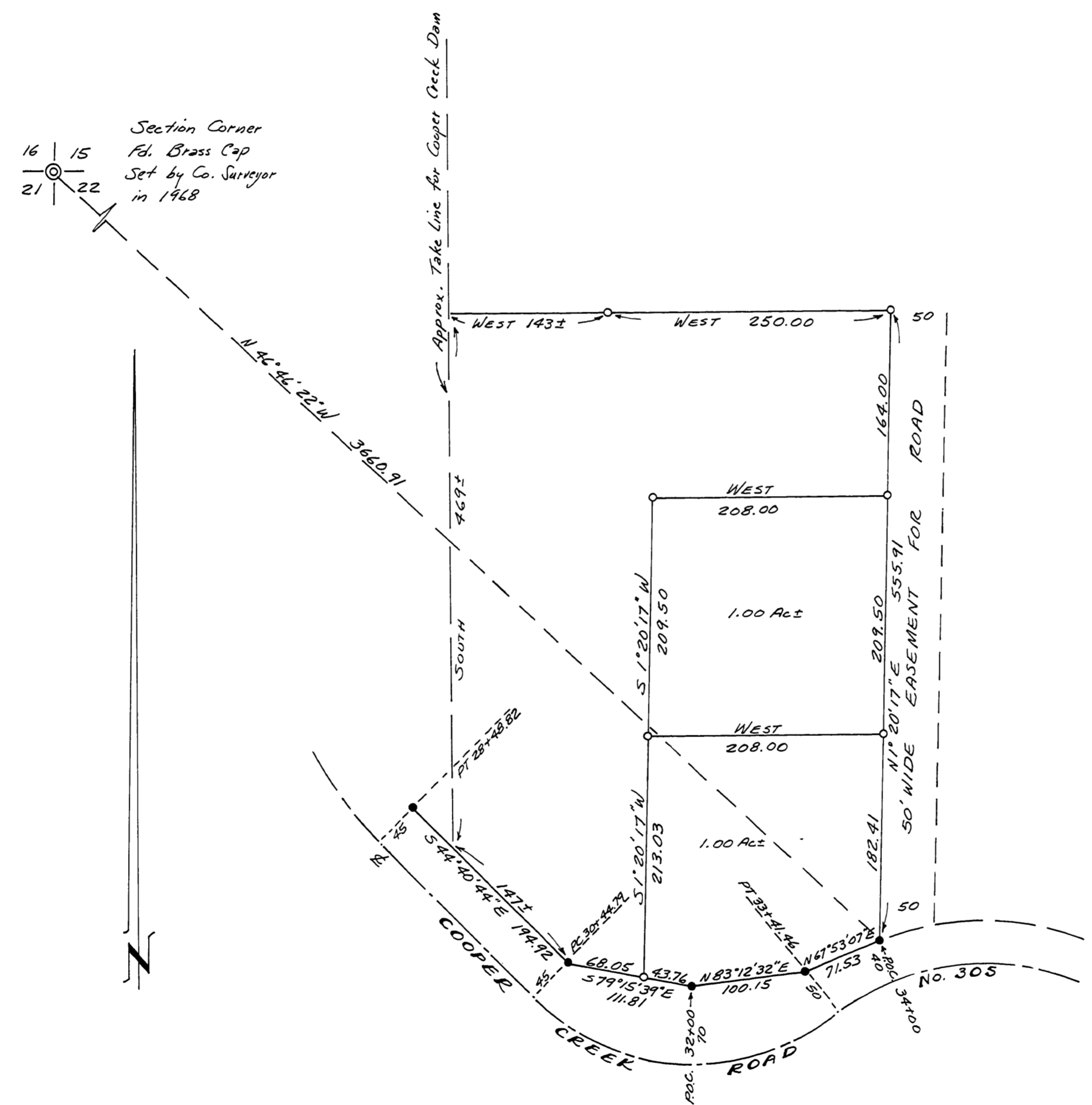
SEP 18

COUNTY SURVEYOR  
DEUELAS COUNTY, OREGON

Bearings based on Solar Observation July 28, 1972

- ~ 1/2" Iron Rod on N. Line of Co. Road R/W
- ~ Set 5/8" Iron Rod

ANY SURVEYORS FILE DATA  
NOT REMOVE FROM OFFICE



Victor M. McLind