

SURVEY IN N.W. ¼ SEC. 6, T 235, R 5W, W.M.
 Surveyed for J.C. Keighley by Victor M. McLind
 July 1972

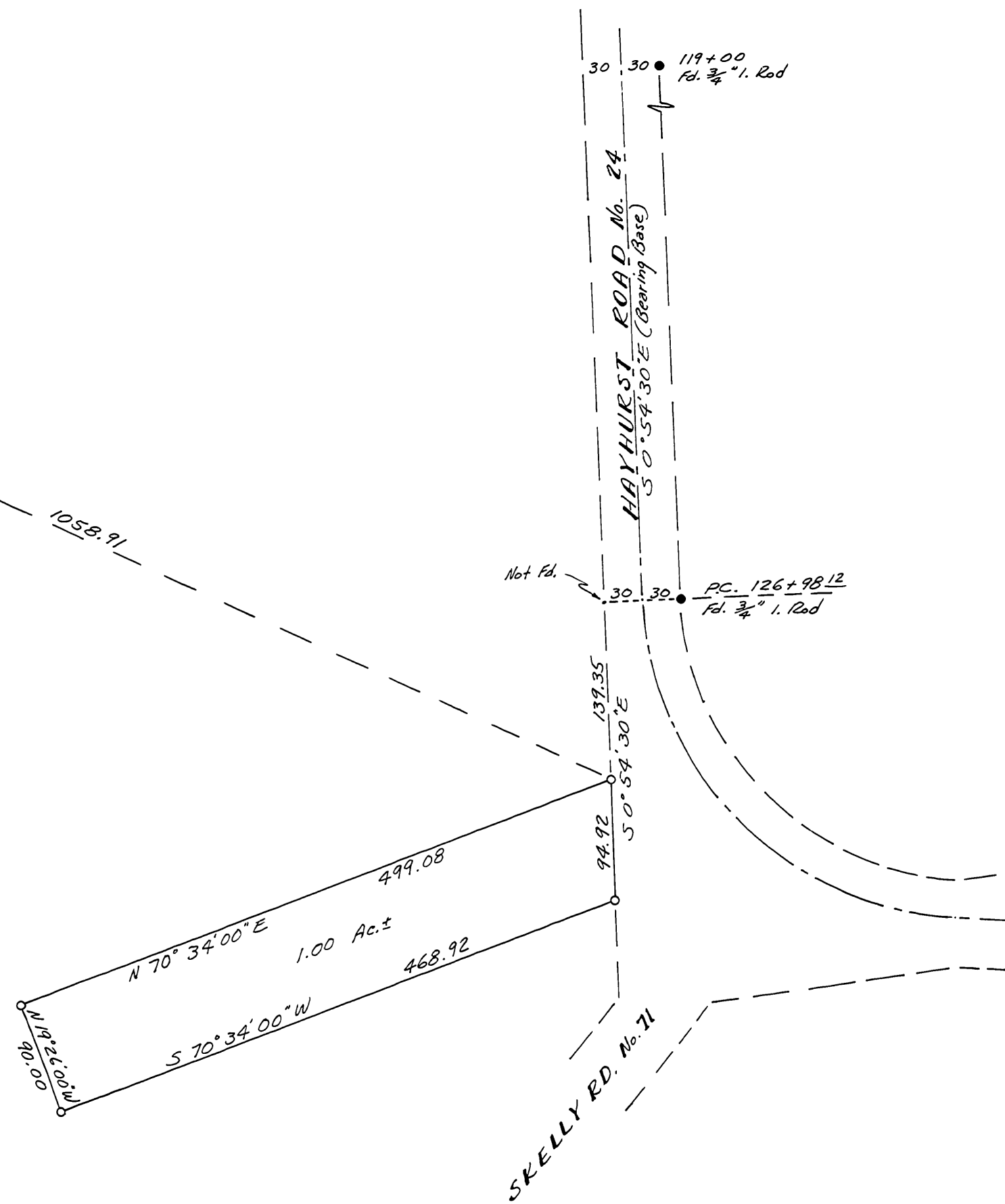
COUNTY SURVEYORS FILE DATA
 NOT REMOVE FROM OFFICE

Bearings based on centerline of Co. Rd. # 24 as shown on
 Improvement Plans.

o ~ Indicates Set 5/8" Iron Rod

Sec. Corner
 Fd. Brass Cap
 U.S. G.L.D. 1943
 T 235
 R 6W | R 5W

Victor M. McLind



M 46 - 26

M 46 - 26

