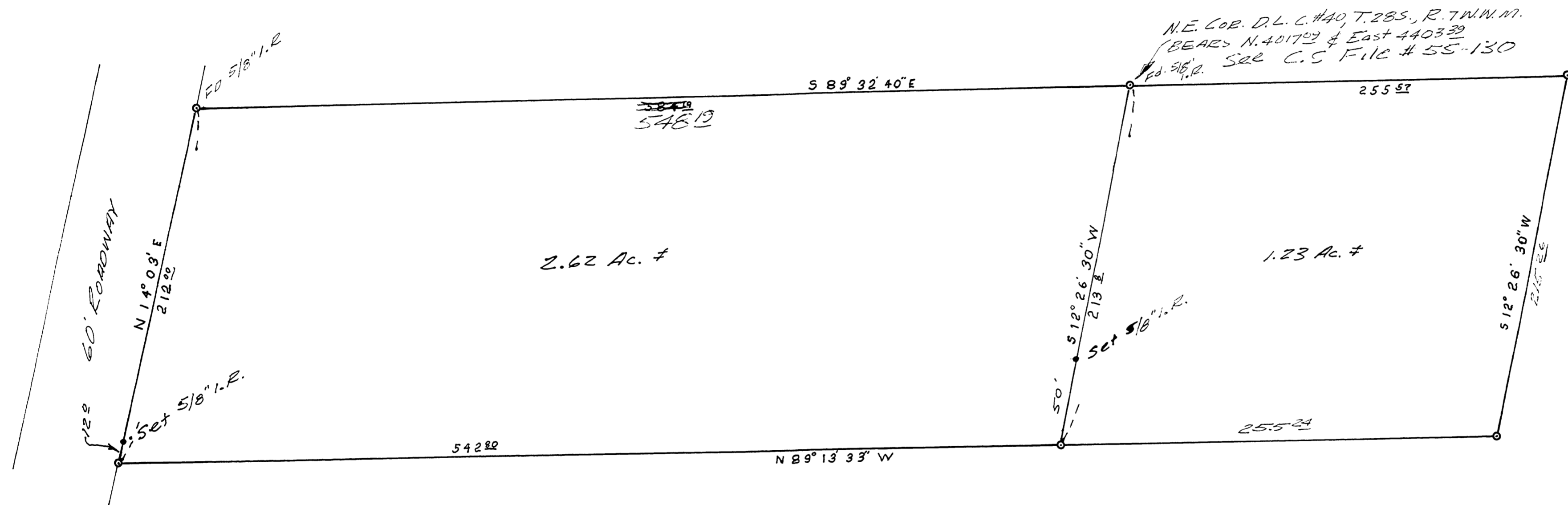


FILED *LL*
RECEIVED *LL*
JUL 14 1972
COUNTY SURVEYOR
DOUGLAS COUNTY, ORE.

MAP FILE M.46-10



SURVEY FOR DEED DESCRIPTION
IN SEC. 11, T. 28S., R. 7W.W.M.
FOR NORTHWEST PROPERTIES
by BRUCE ROGERS
JULY, 1972
1" = 50'

BRUCE L. ROGERS
BRUCE L. ROGERS
S.C.S.

MAP FILE M.46-10

