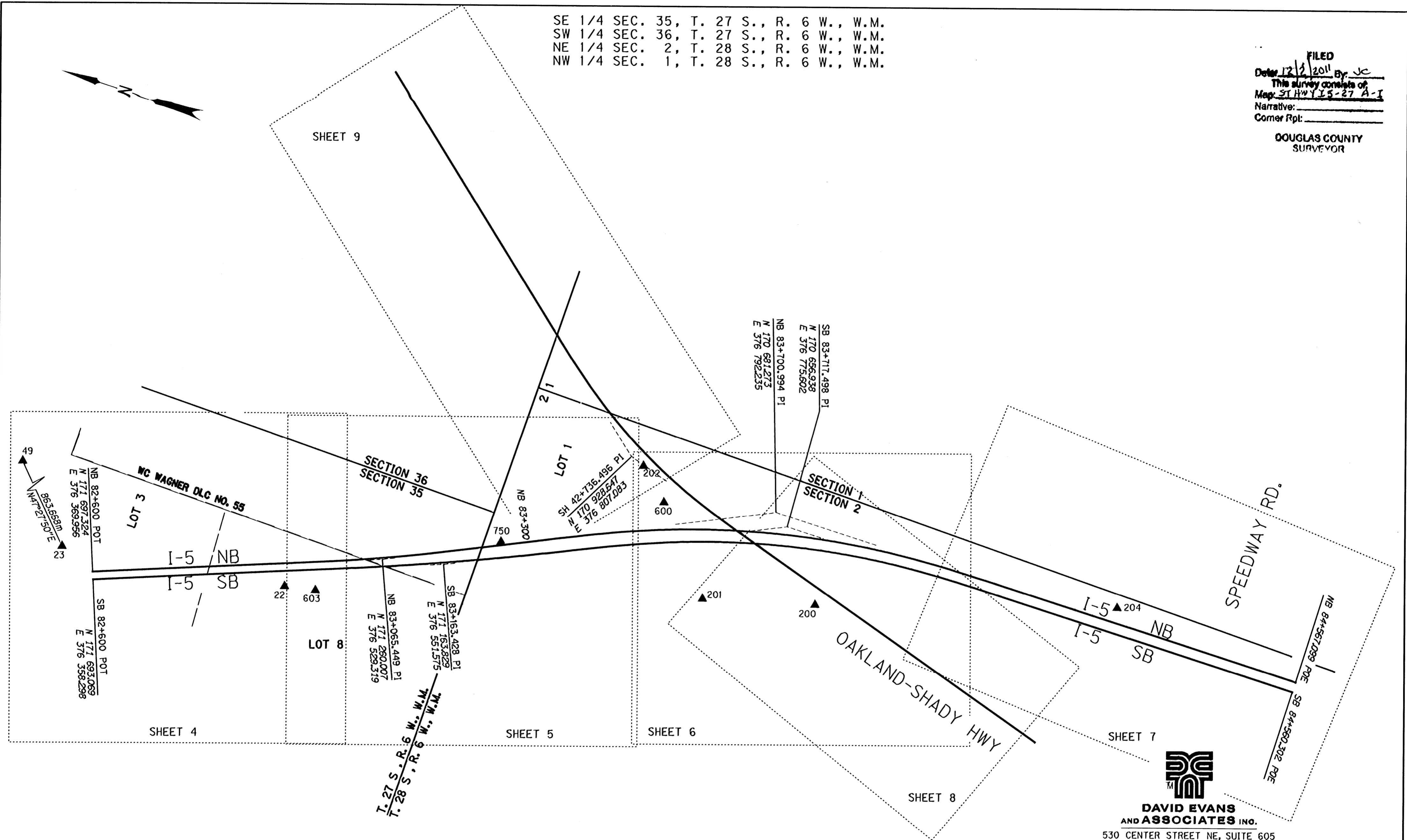


SE 1/4 SEC. 35, T. 27 S., R. 6 W., W.M.  
 SW 1/4 SEC. 36, T. 27 S., R. 6 W., W.M.  
 NE 1/4 SEC. 2, T. 28 S., R. 6 W., W.M.  
 NW 1/4 SEC. 1, T. 28 S., R. 6 W., W.M.

FILED  
 Date: 12/2/2011 By: JC  
 This survey consists of  
 Map: ST HWY I5-27 A-I  
 Narrative:  
 Corner Rpt:

DOUGLAS COUNTY  
 SURVEYOR



LEGEND	
★	SET GPS POINT
▲	SET NETWORK POINT
—	DLC LINE
- - -	SIXTEENTH LINE
—	SECTION LINE

CHARLES STEVENS D.L.C. NO 45

REGISTERED  
 PROFESSIONAL  
 LAND SURVEYOR  
  
 OREGON  
 JULY 11, 2005  
 F. DANIEL ADSIT  
 75495LS  
 EXPIRES: 12/31/2011

FILE NAME: I240IPOSTMON.DGN

**OREGON DEPARTMENT OF TRANSPORTATION**

POST CONSTRUCTION MONUMENTATION SURVEY  
 I-5 O'XING: SOUTH UMPQUA RIVER AND  
 OR99 PACIFIC HWY (SHADY)  
 DOUGLAS COUNTY, OREGON

REGION 3 HEADQUARTERS/DISTRICT 7  
 3500 NW STEWART PARKWAY  
 ROSEBURG, OR 97470

OCTOBER 31, 2011  
 SCALE: NOT TO SCALE  
 SHEET 1 OF 9

  
**DAVID EVANS  
 AND ASSOCIATES INC.**  
 530 CENTER STREET NE, SUITE 605  
 SALEM OREGON 97301  
 PHONE: 503.361.8635

ST. HWY. I5 -027 A