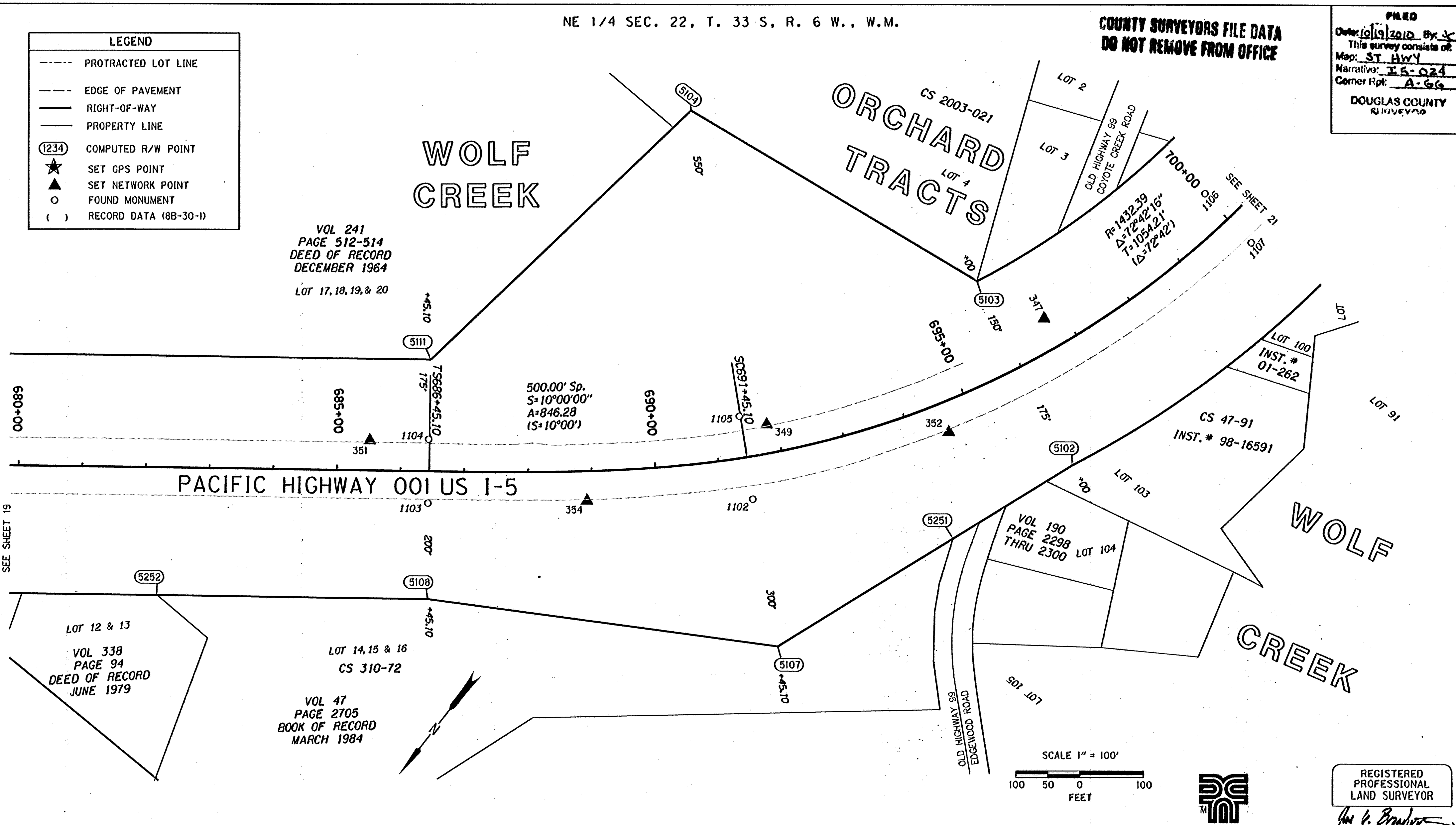


COUNTY SURVEYORS FILE DATA
DO NOT REMOVE FROM OFFICE

PNED
Date: 10/19/2010 By: [Signature]
This survey consists of:
Map: ST HWY
Narrative: IS-024
Corner Rpt: A-66
DOUGLAS COUNTY
SURVEYOR

LEGEND	
---	PROTRACTED LOT LINE
---	EDGE OF PAVEMENT
---	RIGHT-OF-WAY
---	PROPERTY LINE
(1234)	COMPUTED R/W POINT
★	SET GPS POINT
▲	SET NETWORK POINT
○	FOUND MONUMENT
()	RECORD DATA (8B-30-1)

VOL 241
PAGE 512-514
DEED OF RECORD
DECEMBER 1964
LOT 17, 18, 19, & 20



SEE SHEET 19

RECOVERED MONUMENTS AND COMPUTED POINTS LIST

PT. NO.	LDP NORTHING	LDP EASTING	STATION	OFFSET	DATE	DESCRIPTION & REFERENCE DOCUMENTS
1102	387598.08	4144382.59	691+43.43	66.50 RT	02/03/2010	FOUND RR SPIKE W/ NO PUNCH IN CONCRETE, ODOT 8B-29-21
1103	387916.45	4144781.17	686+43.45	49.92 RT	02/03/2010	FOUND 2 3/4" BRASS CAP IN CONCRETE, "STATE HIGHWAY DEPARTMENT, REFERENCE", ODOT 8B-29-21
1104	387836.90	4144841.50	686+43.39	49.92 LT	02/03/2010	FOUND 2 3/4" BRASS CAP IN CONCRETE, "STATE HIGHWAY DEPARTMENT, REFERENCE", ODOT 8B-29-21
1105	387508.51	4144479.10	691+43.28	65.17 LT	02/03/2010	FOUND RR SPIKE W/ NO PUNCH IN CONCRETE, ODOT 8B-29-21
1106	386783.76	4144116.40	700+01.31	53.14 LT	02/03/2010	FOUND 5/8" IR W/ 1 1/2" ALUMINUM CAP, "OREG STATE HWY DIV", ODOT 8B-29-21
1107	386799.52	4144012.07	700+01.35	52.37 RT	02/03/2010	FOUND 5/8" IR W/ 1 1/2" ALUMINUM CAP, "OREG STATE HWY DIV", ODOT 8B-29-21
5102	387248.00	4144019.35	696+00.00	175.00 RT		CALCULATED MONUMENT
5103	387112.38	4144314.70	696+00.00	150.00 LT		CALCULATED MONUMENT
5104	387177.44	4144833.30	691+45.10	550.00 LT		CALCULATED MONUMENT
5107	387755.64	4144210.25	691+45.10	300.00 RT		CALCULATED MONUMENT
5108	388035.10	4144689.25	686+45.10	200.00 RT		CALCULATED MONUMENT
5111	387736.15	4144915.65	686+45.10	175.00 LT		CALCULATED MONUMENT
5251	387453.45	4144096.61	694+07.93	205.23 RT		CALCULATED MONUMENT
5252	388291.83	4145028.27	682+19.84	199.98 RT		CALCULATED MONUMENT

W=WITH, IP=IRON PIPE, IR=IRON ROD, YPC=YELLOW PLASTIC CAP, DRG=ODOT DRAWING B=BOOK P=PAGE
CSNI= COUNTY SURVEY NOT IDENTIFIED



FILE NAME: 16763RET.DGN

REGISTERED PROFESSIONAL LAND SURVEYOR
[Signature]
DAVID EVANS AND ASSOCIATES INC.
530 CENTER STREET NE, SUITE 605
SALEM OREGON 97301
PHONE: 503.361.8635

REGISTERED PROFESSIONAL LAND SURVEYOR
[Signature]
OREGON
JULY 11, 2006
JON KENNETH BROADWATER
61360LS
EXPIRES: 12/31/2011

OREGON DEPARTMENT OF TRANSPORTATION

HORIZONTAL CONTROL, RECOVERY, AND RETRACEMENT SURVEY
I-5: JUMPOFF JOE-GLENDALE PAVING AND CLIMBING LANES
GLENDALE TO SUNNY VALLEY
JOSEPHINE AND DOUGLAS COUNTIES

ODOT REGION 3 WHITE CITY
100 ANTELOPE ROAD
WHITE CITY, OREGON 97503

SEPTEMBER 28, 2010
SCALE: 1" = 100'
SHEET 20 OF 33

THIS IS TO CERTIFY THAT THIS MAP WAS PREPARED USING HP DESIGNJET 1055CM, BLACK C4820a INK ON HP MATTE FILM #51642B.

Josephine Co.

ST. HWY. 15 -024 T