

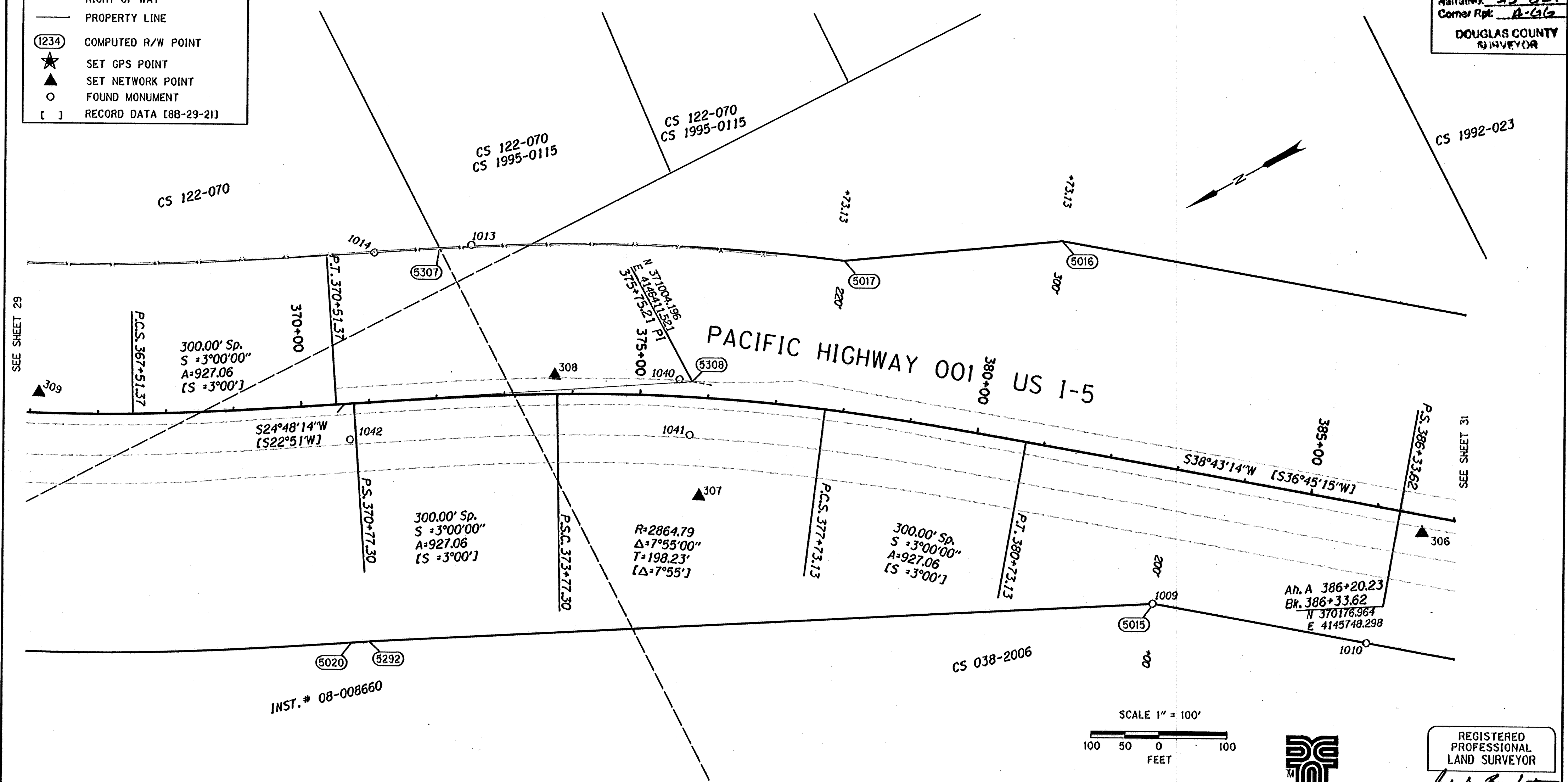
NW 1/4 SEC. 2, T. 34 S, R. 6 W., W.M.

COUNTY SURVEYORS FILE DATA
DO NOT REMOVE FROM OFFICE

FILED
Date: 10/19/2010
This survey consists of
Map: ST HWY
Narrative: 35-024
Corner Rpt: A-G6
DOUGLAS COUNTY
SURVEYOR

LEGEND

- PROTRACTED LOT LINE
- EDGE OF PAVEMENT
- RIGHT-OF-WAY
- PROPERTY LINE
- (1234) COMPUTED R/W POINT
- ★ SET GPS POINT
- ▲ SET NETWORK POINT
- FOUND MONUMENT
- [] RECORD DATA [8B-29-21]



DAVID EVANS AND ASSOCIATES INC.
530 CENTER STREET NE, SUITE 605
SALEM OREGON 97301
PHONE: 503.361.8635

REGISTERED PROFESSIONAL LAND SURVEYOR
David A. Evans
OREGON
JULY 11, 2006
JON KENNETH BROADWATER
61360LS
EXPIRES: 12/31/2011

RECOVERED MONUMENTS AND COMPUTED POINTS LIST

W/=WITH, IP=IRON PIPE, IR=IRON ROD, YPC=YELLOW PLASTIC CAP, DRG=ODOT DRAWING B=BOOK P=PAGE
CSNI= COUNTY SURVEY NOT IDENTIFIED

PT. NO.	LDP NORTHING	LDP EASTING	STATION	OFFSET	DATE	DESCRIPTION & REFERENCE DOCUMENTS
1009	370563.51	4145802.00	382+98.44	199.90' RT	11/10/2009	FOUND 5/8" IR W/ 1 1/2" ALUMINUM CAP, "OREGON STATE HWY DEPT." FLUSH, ODOT 8B-29-21, CS 038-2006
1010	370313.71	4145601.61	386+18.69	199.98' RT	11/10/2009	FOUND 5/8" IR W/ 1 1/2" ALUMINUM CAP, "OREGON STATE HWY DEPT." FLUSH, ODOT 8B-29-21, CS 038-2006
1013	371194.43	4146743.37	372+60.82	222.67 LT	11/19/2009	FOUND 1" IP, ODOT 8B-29-21
1014	371325.64	4146801.67	371+21.37	219.32 LT	11/20/2009	FOUND 1, 6 SIDED IRON BAR, UP 0.25', CS 122-70, CS 1995-115
1040	371018.99	4146423.54	375+56.48	25.07 LT	01/20/2010	FOUND 2 1/2" BRASS DISK IN CONCRETE, DOWN 0.5', ODOT 8B-29-21, CS 038-2006
1041	371044.97	4146344.59	375+75.80	55.80 RT	01/20/2010	FOUND 2 1/2" BRASS DISK IN CONCRETE, DOWN 0.4', UNKNOWN
1042	371488.01	4146577.15	370+68.42	52.62 RT	01/20/2010	FOUND 2 1/2" BRASS DISK IN CONCRETE, UP 0.5', ODOT 8B-29-21
5015	370562.36	4145800.94	383+00.00	200.00 RT		CALCULATED MONUMENT
5016	370426.61	4146332.96	380+73.13	300.00 LT		CALCULATED MONUMENT
5017	370723.09	4146461.03	377+73.13	220.00 LT		CALCULATED MONUMENT
5020	371628.24	4146314.35	370+51.37	350.00 RT		CALCULATED MONUMENT
5292	371604.70	4146303.47	370+77.30	350.00 RT		CALCULATED MONUMENT
5307	371237.80	4146761.26	372+15.85	220.00 LT		CALCULATED MONUMENT
5308	371004.20	4146411.52	375+75.21	22.58 LT		CALCULATED MONUMENT



OREGON DEPARTMENT OF TRANSPORTATION
HORIZONTAL CONTROL, RECOVERY, AND RETRACEMENT SURVEY
I-5: JUMPOFF JOE-GLENDALE PAVING AND CLIMBING LANES
GLENDALE TO SUNNY VALLEY
JOSEPHINE AND DOUGLAS COUNTIES

ODOT REGION 3 WHITE CITY
100 ANTELOPE ROAD
WHITE CITY, OREGON 97503

SEPTEMBER 28, 2010
SCALE: 1" = 100'
SHEET 30 OF 33

THIS IS TO CERTIFY THAT THIS MAP WAS PREPARED USING HP DESIGNJET 1055CM, BLACK C4820d INK ON HP MATTE FILM #51642B.

Josephine co.

ST. HWY. I5 -024 DD