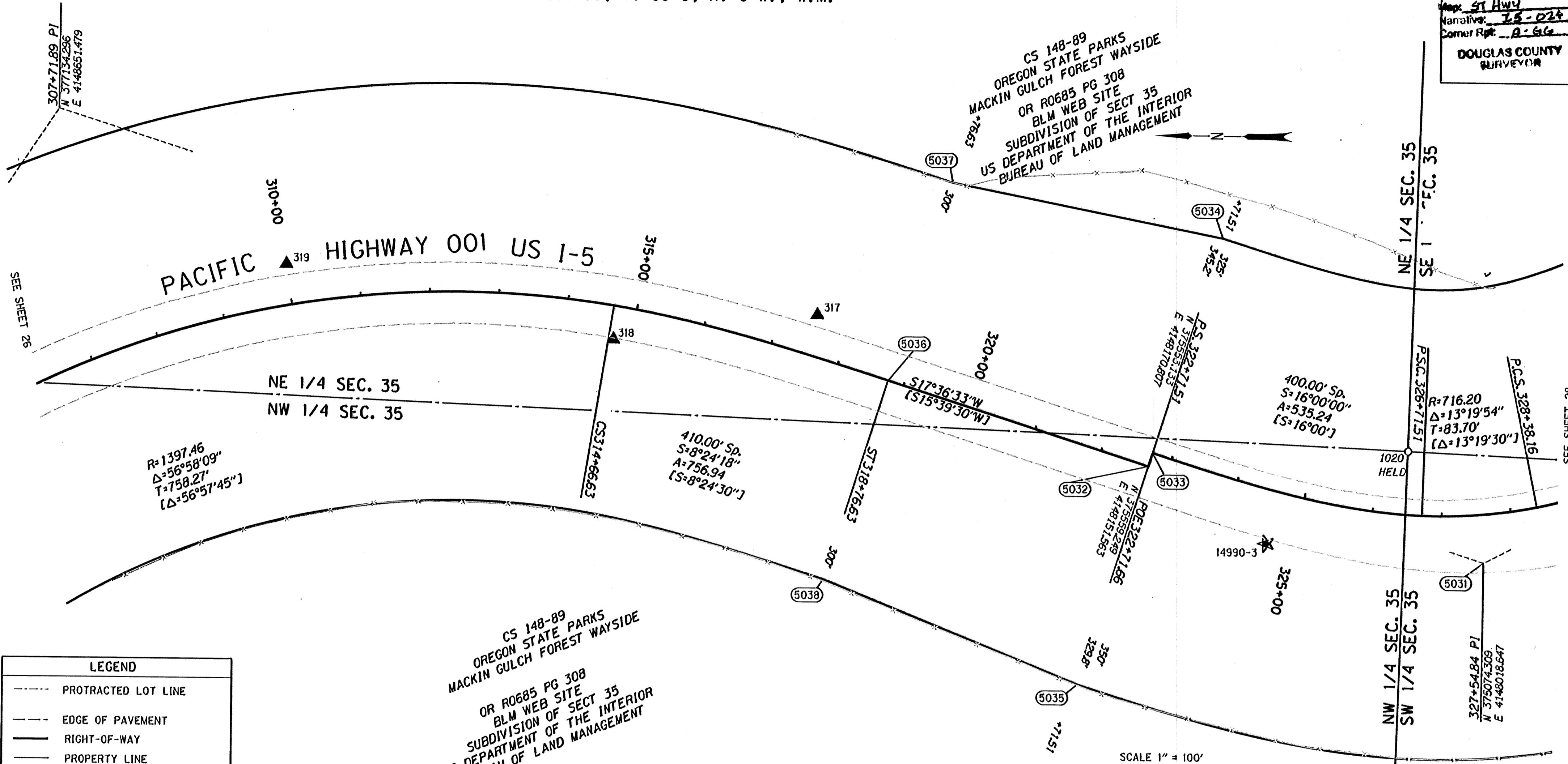


NW 1/4 SEC. 35, T. 33 S, R. 6 W., W.M.  
 NE 1/4 SEC. 35, T. 33 S, R. 6 W., W.M.  
 SW 1/4 SEC. 35, T. 33 S, R. 6 W., W.M.  
 SE 1/4 SEC. 35, T. 33 S, R. 6 W., W.M.

COUNTY SURVEYORS FILE DATA  
 DO NOT REMOVE FROM OFFICE

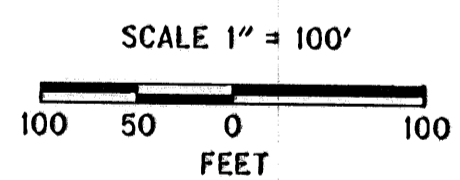
FILED  
 Date 10/19/2010 By JC  
 This survey consists of:  
 Map: ST HWY  
 Narrative: IS-024  
 Corner Rpt: A-GG  
 DOUGLAS COUNTY  
 SURVEYOR



**LEGEND**

- PROTRACTED LOT LINE
- EDGE OF PAVEMENT
- RIGHT-OF-WAY
- PROPERTY LINE
- (1234) COMPUTED R/W POINT
- ★ SET GPS POINT
- ▲ SET NETWORK POINT
- FOUND MONUMENT
- [ ] RECORD DATA [88-29-21]

W/=WITH, IP=IRON PIPE, IR=IRON ROD, YPC=YELLOW PLASTIC CAP, DRG=ODOT DRAWING B=BOOK P=PAGE  
 BD=BRASS DISK, SHT.=SHEET, CSNI= COUNTY SURVEY NOT IDENTIFIED



**DAVID EVANS AND ASSOCIATES INC.**  
 530 CENTER STREET NE, SUITE 605  
 SALEM OREGON 97301  
 PHONE: 503.361.8635  
 FILE NAME: 16763RET.DGN

REGISTERED PROFESSIONAL LAND SURVEYOR  
*Jon K. Broadwater*  
 OREGON  
 JULY 11, 2006  
 JON KENNETH BROADWATER  
 61360LS  
 EXPIRES: 12/31/2011

**RECOVERED MONUMENTS AND COMPUTED POINTS LIST**

PT. NO.	LDP NORTHING	LDP EASTING	STATION	OFFSET	DATE	DESCRIPTION & REFERENCE DOCUMENTS
1020	375184.53	4148177.77	326+44.76	90.83 LT	12/09/2009	FOUND 2"BD, UP 0.2', "T33S R6W C1/4 S 35 2004", ON BLM WEB SITE. OR-0685 P 0308.0 HELD
5031	375074.31	4148018.65	327+54.84	69.97 RT		CALCULATED MONUMENT
5032	375559.25	4148151.56	322+71.66	0.00		CALCULATED MONUMENT
5033	375553.13	4148170.81	322+71.51	0.00		CALCULATED MONUMENT
5034	375454.69	4148480.54	322+71.51	325.00 LT		CALCULATED MONUMENT
5035	375659.15	4147837.25	322+71.51	350.00 RT		CALCULATED MONUMENT
5036	375935.77	4148271.07	318+76.63	0.00		CALCULATED MONUMENT
5037	375845.01	4148557.01	318+76.63	300.00 LT		CALCULATED MONUMENT
5038	376026.52	4147985.13	318+76.64	300.00 RT		CALCULATED MONUMENT

**OREGON DEPARTMENT OF TRANSPORTATION**  
 HORIZONTAL CONTROL, RECOVERY, AND RETRACEMENT SURVEY  
 1-5: JUMPOFF JOE-GLENDALE PAVING AND CLIMBING LANES  
 GLENDALE TO SUNNY VALLEY  
 JOSEPHINE AND DOUGLAS COUNTIES

ODOT REGION 3 WHITE CITY  
 100 ANTELOPE ROAD  
 WHITE CITY, OREGON 97503

SEPTEMBER 28, 2010  
 SCALE: 1" = 100'  
 SHEET 27 OF 33

THIS IS TO CERTIFY THAT THIS MAP WAS PREPARED USING HP DESIGNJET 1055CM, BLACK C4820d INK ON HP MATTE FILM #51642B.

Josephine Co.

**ST. HWY. I5 -024 AA**