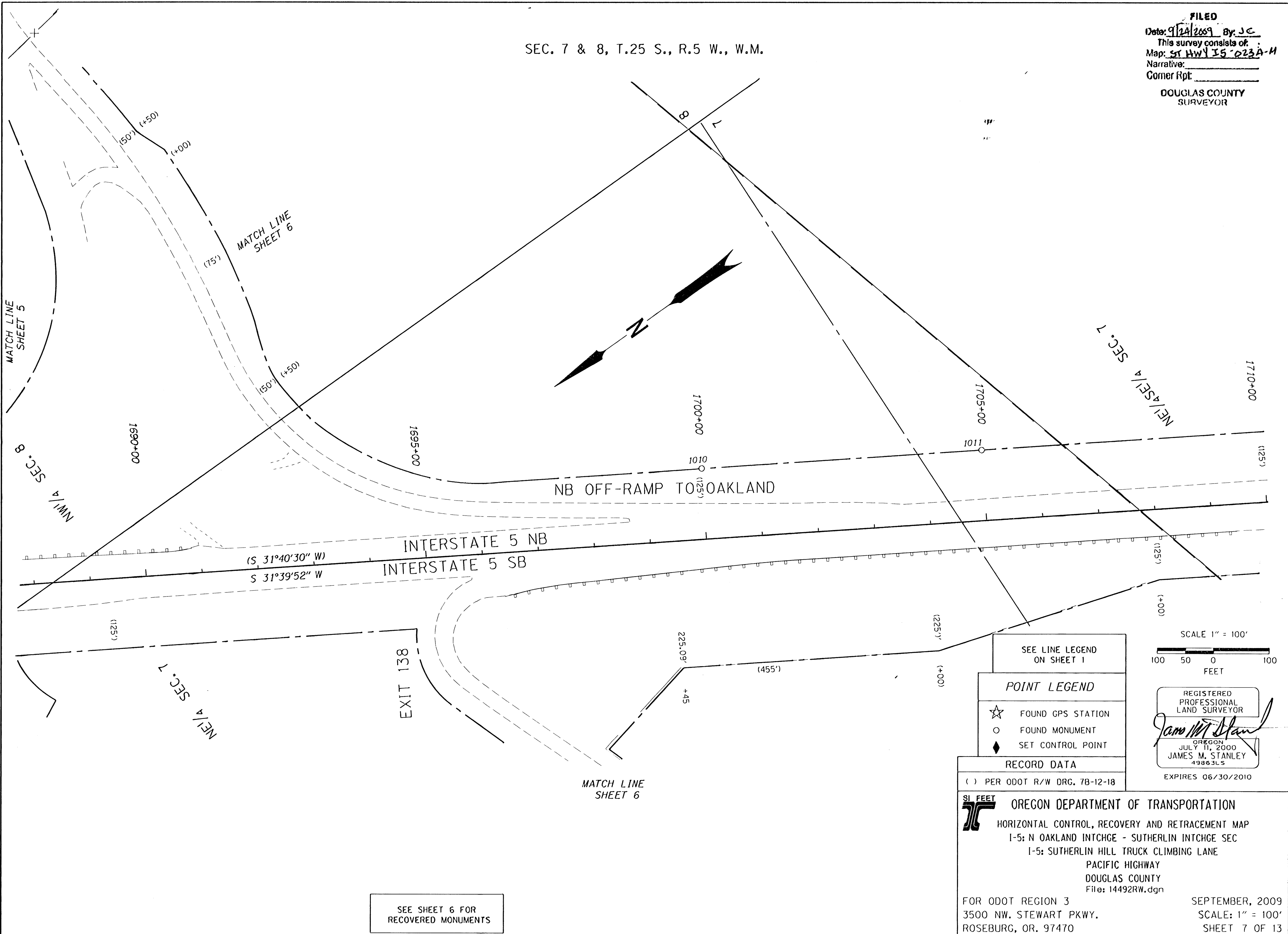


SEC. 7 & 8, T.25 S., R.5 W., W.M.

FILED  
Date: 9/24/2009 By: J.C.  
This survey consists of:  
Map: ST HWY I5 -023A-M  
Narrative:  
Corner Rpt:  
DOUGLAS COUNTY  
SURVEYOR



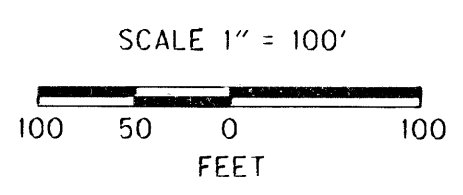
SEE LINE LEGEND ON SHEET 1

**POINT LEGEND**


- ☆ FOUND GPS STATION
- FOUND MONUMENT
- ◆ SET CONTROL POINT

**RECORD DATA**

( ) PER ODOT R/W DRG. 7B-12-18



REGISTERED PROFESSIONAL LAND SURVEYOR  
*James M. Stanley*  
OREGON  
JULY 11, 2000  
JAMES M. STANLEY  
49863LS  
EXPIRES 06/30/2010

**SI FEET**  
 OREGON DEPARTMENT OF TRANSPORTATION  
HORIZONTAL CONTROL, RECOVERY AND RETRACEMENT MAP  
I-5: N OAKLAND INTCHGE - SUTHERLIN INTCHGE SEC  
I-5: SUTHERLIN HILL TRUCK CLIMBING LANE  
PACIFIC HIGHWAY  
DOUGLAS COUNTY  
File: 14492RW.dgn  
FOR ODOT REGION 3  
3500 NW. STEWART PKWY.  
ROSEBURG, OR. 97470  
SEPTEMBER, 2009  
SCALE: 1" = 100'  
SHEET 7 OF 13

ST. HWY. I5 -023 G