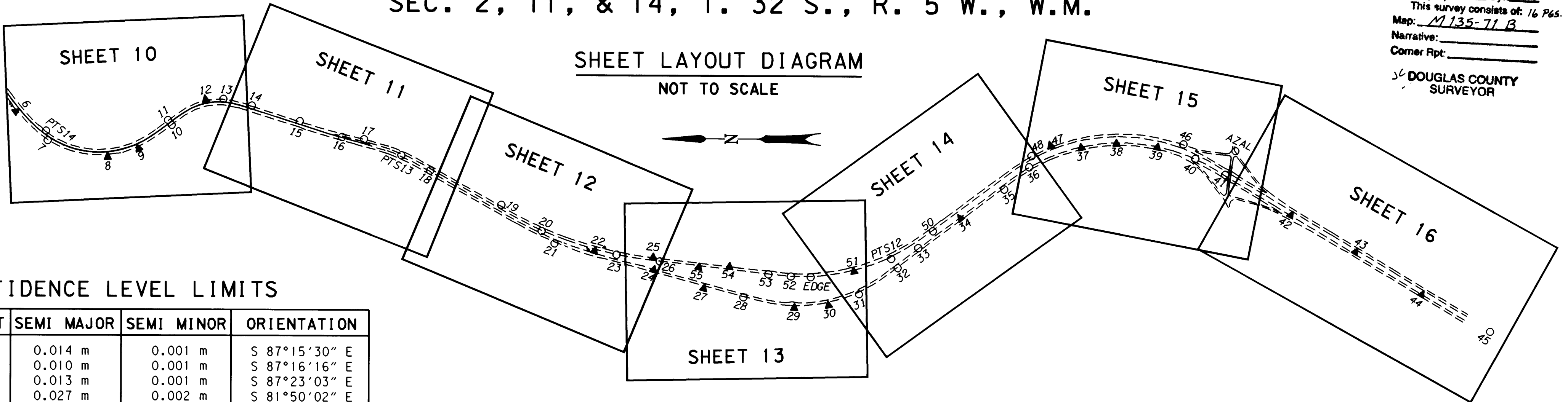


SEC. 26 & 35, T. 31 S., R. 5 W. AND
SEC. 2, 11, & 14, T. 32 S., R. 5 W., W.M.

COUNTY SURVEYORS FILE DATA
DO NOT REMOVE FROM OFFICE

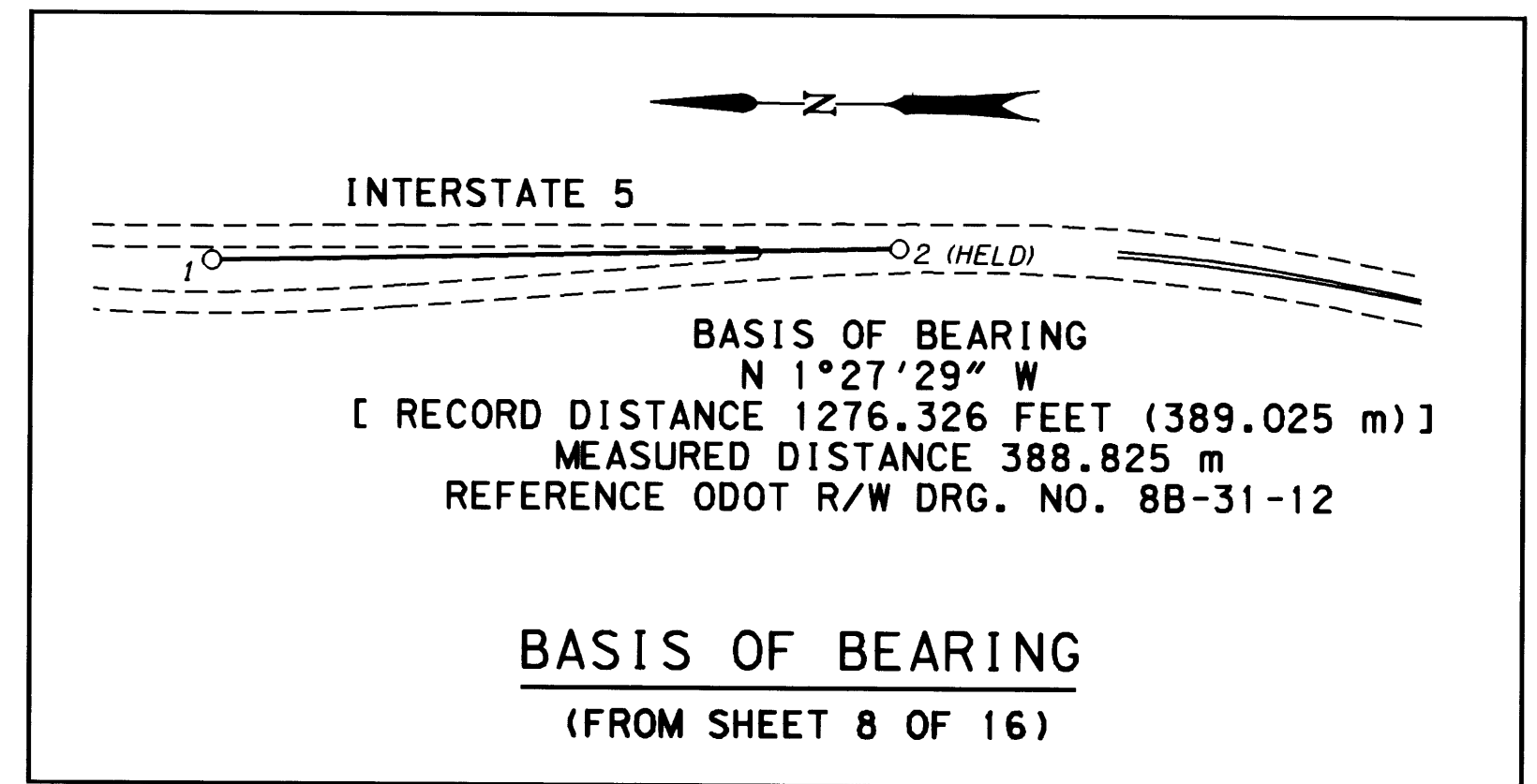
FILED
Date: 10/30/2000 By: JP
This survey consists of: 16 Pgs.
Map: M135-71 B
Narrative: _____
Corner Rpt: _____
DOUGLAS COUNTY
SURVEYOR



CONFIDENCE LEVEL LIMITS

POINT	SEMI MAJOR	SEMI MINOR	ORIENTATION
PTS16	0.014 m	0.001 m	S 87°15'30" E
56	0.010 m	0.001 m	S 87°16'16" E
3	0.013 m	0.001 m	S 87°23'03" E
PTS15	0.027 m	0.002 m	S 81°50'02" E
3A	0.022 m	0.002 m	S 83°04'50" E
4	0.032 m	0.003 m	S 76°48'37" E
5	0.036 m	0.004 m	S 72°05'53" E
6	0.052 m	0.010 m	S 56°31'34" E
7	0.064 m	0.010 m	S 53°56'29" E
PTS14	0.062 m	0.010 m	S 55°52'09" E
8	0.081 m	0.009 m	S 58°23'55" E
9	0.088 m	0.009 m	S 63°04'45" E
10	0.095 m	0.013 m	S 70°08'43" E
11	0.093 m	0.014 m	S 70°46'39" E
12	0.103 m	0.019 m	S 77°31'22" E
13	0.109 m	0.020 m	S 78°27'42" E
14	0.120 m	0.020 m	S 78°43'32" E
15	0.139 m	0.019 m	S 78°16'30" E
16	0.156 m	0.018 m	S 77°29'37" E
17	0.165 m	0.018 m	S 77°58'40" E
PTS13	0.181 m	0.018 m	S 77°04'42" E
18	0.194 m	0.017 m	S 76°06'56" E
19	0.228 m	0.016 m	S 74°25'31" E
20	0.248 m	0.016 m	S 72°58'17" E
21	0.255 m	0.016 m	S 72°08'56" E
22	0.273 m	0.016 m	S 72°44'15" E
23	0.283 m	0.016 m	S 72°55'10" E
24	0.301 m	0.016 m	S 72°41'27" E
25	0.299 m	0.017 m	S 73°44'51" E
26	0.303 m	0.016 m	S 73°28'43" E
27	0.326 m	0.016 m	S 72°29'07" E
28	0.346 m	0.016 m	S 72°39'51" E
29	0.371 m	0.016 m	S 73°09'13" E
30	0.387 m	0.017 m	S 74°04'37" E
31	0.400 m	0.018 m	S 75°22'17" E
32	0.416 m	0.023 m	S 77°50'56" E
PTS12	0.412 m	0.024 m	S 78°22'16" E
33	0.424 m	0.027 m	S 79°31'49" E
34	0.442 m	0.034 m	S 82°08'20" E
35	0.463 m	0.040 m	S 84°23'53" E
36	0.475 m	0.045 m	S 86°00'28" E
55	0.321 m	0.017 m	S 74°03'36" E
54	0.335 m	0.017 m	S 74°48'21" E
53	0.354 m	0.018 m	S 74°59'08" E
52	0.365 m	0.018 m	S 75°17'24" E
EDGE	0.374 m	0.018 m	S 75°38'36" E
51	0.394 m	0.021 m	S 76°57'16" E
50	0.430 m	0.030 m	S 80°52'22" E
47	0.485 m	0.049 m	S 87°33'13" E
49	0.465 m	0.043 m	S 85°21'24" E
48	0.476 m	0.047 m	S 86°43'35" E
37	0.502 m	0.049 m	S 87°35'11" E
38	0.520 m	0.050 m	S 87°59'13" E

POINT	SEMI MAJOR	SEMI MINOR	ORIENTATION
39	0.542 m	0.050 m	S 87°56'38" E
AZAL	0.585 m	0.050 m	S 87°58'10" E
40	0.563 m	0.048 m	S 87°23'38" E
46	0.556 m	0.050 m	S 88°09'10" E
41	0.580 m	0.046 m	S 86°38'59" E
42	0.618 m	0.042 m	S 84°53'29" E
43	0.655 m	0.040 m	S 83°24'38" E
44	0.696 m	0.039 m	S 81°48'33" E
45	0.737 m	0.040 m	S 80°33'13" E
57	0.013 m	0.001 m	S 83°32'53" E
58	0.022 m	0.002 m	S 75°03'05" E
59	0.030 m	0.003 m	S 71°57'12" E
60	0.037 m	0.003 m	S 71°17'48" E
61	0.051 m	0.003 m	S 74°04'38" E
62	0.062 m	0.003 m	S 74°26'29" E
63	0.080 m	0.003 m	S 74°44'14" E
64	0.100 m	0.003 m	S 73°57'05" E
65	0.119 m	0.003 m	S 75°06'13" E
66	0.137 m	0.003 m	S 74°25'50" E
67	0.148 m	0.003 m	S 75°09'38" E
68	0.155 m	0.005 m	S 76°43'58" E
69	0.159 m	0.008 m	S 78°40'56" E
70	0.164 m	0.019 m	S 84°21'47" E
71	0.169 m	0.039 m	N 86°42'59" E
PTS18	0.174 m	0.047 m	N 82°26'39" E
72	0.184 m	0.051 m	N 79°37'01" E
73	0.204 m	0.051 m	N 78°38'17" E
75	0.226 m	0.053 m	N 76°48'13" E
74	0.215 m	0.050 m	N 78°28'16" E
PTS19	0.233 m	0.054 m	N 76°06'38" E
76	0.245 m	0.058 m	N 73°37'43" E
77	0.257 m	0.061 m	N 71°23'21" E
78	0.264 m	0.064 m	N 69°39'26" E
79	0.267 m	0.068 m	N 67°39'16" E
80	0.281 m	0.073 m	N 64°44'16" E
81	0.293 m	0.075 m	N 63°44'56" E
82	0.301 m	0.074 m	N 63°56'25" E
PTS20	0.327 m	0.076 m	N 62°12'24" E
83	0.336 m	0.076 m	N 62°21'50" E
84	0.359 m	0.075 m	N 62°31'35" E
85	0.371 m	0.076 m	N 61°50'55" E
M747	0.388 m	0.079 m	N 60°01'48" E
86	0.400 m	0.079 m	N 59°52'30" E
87	0.418 m	0.081 m	N 58°48'33" E
93	0.431 m	0.084 m	N 57°33'25" E
92	0.451 m	0.084 m	N 57°17'49" E



REGISTERED
PROFESSIONAL
LAND SURVEYOR
Christine V. Blavin
OREGON
JULY 19, 1994
CHRISTINE V. BLAVIN
2000
EXPIRES: DEC. 31, 2001

METRIC SURVEY
1 METER = 3937 U.S. FEET / 1200
TO CONVERT A METRIC DISTANCE DIVIDE BY 0.30480061

LEGEND

▲	SET MONUMENT
○	FOUND MONUMENT

OREGON DEPARTMENT OF TRANSPORTATION
HORIZONTAL CONTROL
AND RECOVERY MAP
CANYONVILLE - AZALEA SECTION
INTERSTATE 5
DOUGLAS COUNTY
3500 STEWART PARKWAY, SUITE 140
ROSEBURG, OREGON 97470

OCTOBER 26, 2000
PROJECT KEY *10832