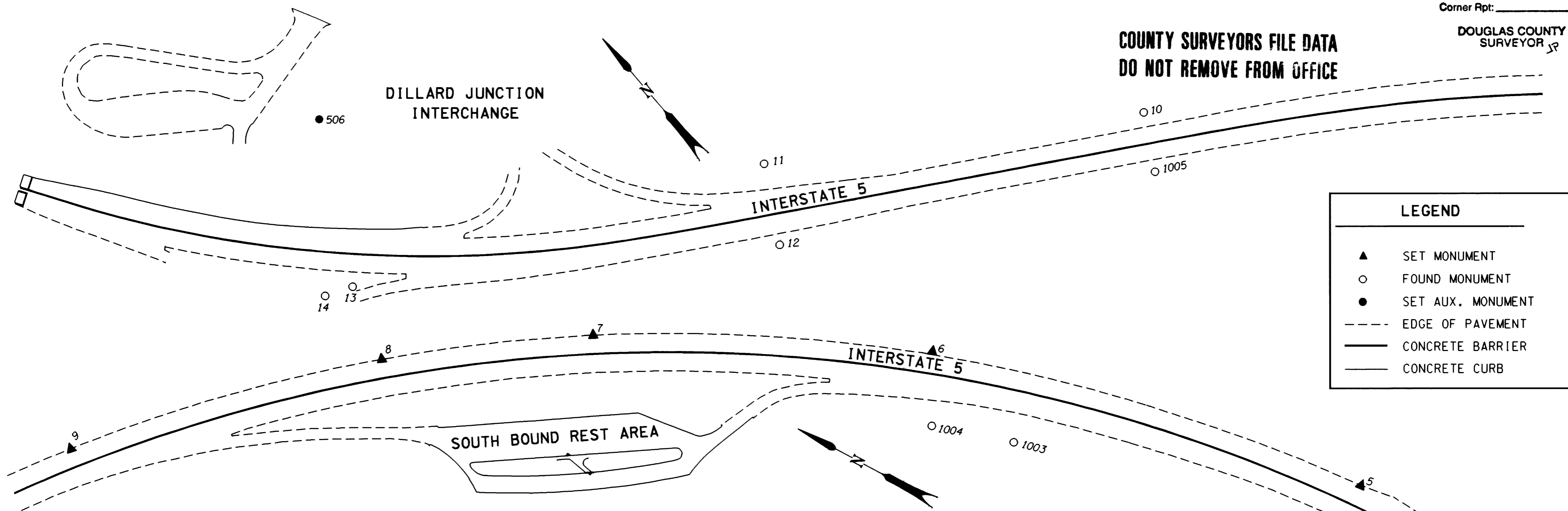


NE 1/4 & SE 1/4 SEC. 12, T. 29 S., R. 6 W., AND
 SW 1/4 SEC. 7, AND NW 1/4 & NE 1/4 SEC. 18, T. 29 S., R. 5 W., W.M.

FILED
 Date: 6/22/2000 By: JP
 This survey consists of: 4 SHEETS
 Map: M135-11B
 Narrative: _____
 Corner Apt: _____
 DOUGLAS COUNTY
 SURVEYOR JR

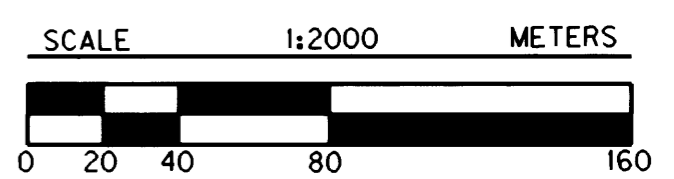
COUNTY SURVEYORS FILE DATA
 DO NOT REMOVE FROM OFFICE



LEGEND	
▲	SET MONUMENT
○	FOUND MONUMENT
●	SET AUX. MONUMENT
- - - -	EDGE OF PAVEMENT
—	CONCRETE BARRIER
—	CONCRETE CURB

POINT ID	LDP NORTHING	LDP EASTING	DESCRIPTION
5	157619.196	379099.286	SET 16 mm X 762 mm IRON REBAR W/ A 38 mm BRASS CAP STAMPED "ODOT CONTROL 5".
6	157930.041	379039.021	SET 16 mm X 762 mm IRON REBAR W/ A 38 mm BRASS CAP STAMPED "ODOT CONTROL 6".
7	158145.988	378935.486	SET 16 mm X 762 mm IRON REBAR W/ A 38 mm BRASS CAP STAMPED "ODOT CONTROL 7".
8	158269.109	378849.776	SET 16 mm X 762 mm IRON REBAR W/ A 38 mm BRASS CAP STAMPED "ODOT CONTROL 8".
9	158432.141	378689.954	SET 16 mm X 762 mm IRON REBAR W/ A 38 mm BRASS CAP STAMPED "ODOT CONTROL 9".
10	158601.439	378450.508	FOUND 2 3/4" BRASS DISK STAMPED "STATE HIGHWAY DEPARTMENT BM NO. ELEVATION PS RP 70.92 FEET" SET IN A 220 mm X 220 mm CONC. BLOCK FLUSH WITH SURFACE IN GOOD CONDITION. PADDLE BOARD NEARBY MARKED "SHRP PS L 3196+11.35 70.92" STATION 3196+11.35, 70.92 LT. (R/W DRG. NO. *8B-29-20)
11	158747.976	378223.647	FOUND 2 3/4" BRASS DISK STAMPED "STATE HIGHWAY DEPARTMENT BM NO. ELEVATION PT RP 3187+26.33 117.14 FEET" SET IN CONC. BLOCK FLUSH W/ SURFACE IN GOOD CONDITION. PADDLE BOARD NEARBY MARKED "SHRP POT LN 3187+25.73 103.14" STATION SB 3187+44.86 POT = L 3187+26.33 PT (18.4 FT. RT.) 117.14 FT. LT. (R/W DRG. NO. *8B-29-20)
12	158697.228	378194.494	FOUND 2 3/4" BRASS DISK STAMPED "STATE HIGHWAY DEPARTMENT BM NO. ELEVATION RP 3187+26.33 75.0 PT FEET" SET IN 325 mm X 350 mm CONC. BLOCK FLUSH W/ SURFACE IN GOOD CONDITION. PADDLE BOARD NEARBY MARKED "SHRP P.O.T. LS 3187+44.20 56.60" STATION SB 3187+44.86 POT = L 3187+26.33 PT (18.4 RT.) 56.60 FT. RT. (R/W DRG. *8B-29-20)
13	158870.616	377946.836	FOUND 2 3/4" BRASS DISK STAMPED "STATE HIGHWAY DEPARTMENT BM NO. ELEVATION LN PI FEET" SET IN A 210 mm X 250 mm CONC. BLOCK FLUSH W/ SURFACE IN GOOD CONDITION. PADDLE BOARD NEARBY MARKED "SHRP POST LN 3177+69.71" STATION NB 3177+69.71 PI. (R/W DRG. *8B-29-20)
14	158878.198	377927.890	FOUND 2 3/4" BRASS DISK STAMPED "STATE HIGHWAY DEPARTMENT BM NO. ELEVATION POST FEET" SET IN A 300 mm X 340 mm CONC. BLOCK FLUSH W/ SURFACE IN GOOD CONDITION. PADDLE BOARD NEARBY MARKED "SHRP POST LS 3177+15.67" (R/W DRG. *8B-29-20)
1003	157848.878	379008.851	FOUND 5/8" I. ROD W/ A 1 1/2" ALUM. CAP STAMPED "HWY" (COULD NOT MAKE OUT THE REST) 20 mm BELOW SURFACE IN GOOD CONDITION. PADDLE BOARD NEARBY MARKED "SHRW 3228+00 125" STATION 3228+00, 125 FT. RT. (R/W DRG. *8B-29-20)
1004	157905.227	378991.574	FOUND 5/8" I. ROD 100 mm BELOW SURFACE IN GOOD CONDITION. PADDLE BOARD NEARBY MARKED "SHRW 3226+00 125", STATION 3226+00, 125 FT. RT. (R/W DRG. *8B-29-20)
1005	158564.424	378429.242	FOUND 2 3/4" BRASS DISK STAMPED "STATE HIGHWAY DEPARTMENT BM NO. ELEVATION PS RP 69.24 FT." SET IN A 250 mm X 250 mm CONC. BLOCK FLUSH W/ SURFACE IN GOOD CONDITION. PADDLE BOARD NEARBY MARKED "SHRP P.S. L 3196+11.35 69.24", STATION 3196+11.35, 69.24 FT. RT. (R/W DRG. *8B-29-20)
506	158975.853	378006.025	SET 16 mm X 762 mm IRON REBAR W/ A 38 mm ALUM. CAP STAMPED "ODOT HORIZ. CONTROL 506".

REGISTERED
 PROFESSIONAL
 LAND SURVEYOR
 Christine V. Blewie
 OREGON
 JULY 19, 1994
 CHRISTINE V. BLEWIE
 2000
 EXPIRES: DEC. 31, 2001



METRIC SURVEY
 1 METER = 3937 U.S. FEET / 1200
 TO CONVERT A METRIC DISTANCE DIVIDE BY 0.30480061

OREGON DEPARTMENT OF TRANSPORTATION
 HORIZONTAL CONTROL
 AND RECOVERY MAP
 DILLARD JUNCTION - MYRTLE CREEK SECTION
 INTERSTATE 5
 DOUGLAS COUNTY
 3500 STEWART PARKWAY, SUITE 140
 ROSEBURG, OREGON 97470
 JUNE 8, 2000
 PROJECT KEY *09111
 SHEET 2 OF 4

ST. HWY. 15-009B

MAP FILE M135-11-B

MAP FILE M135-11B