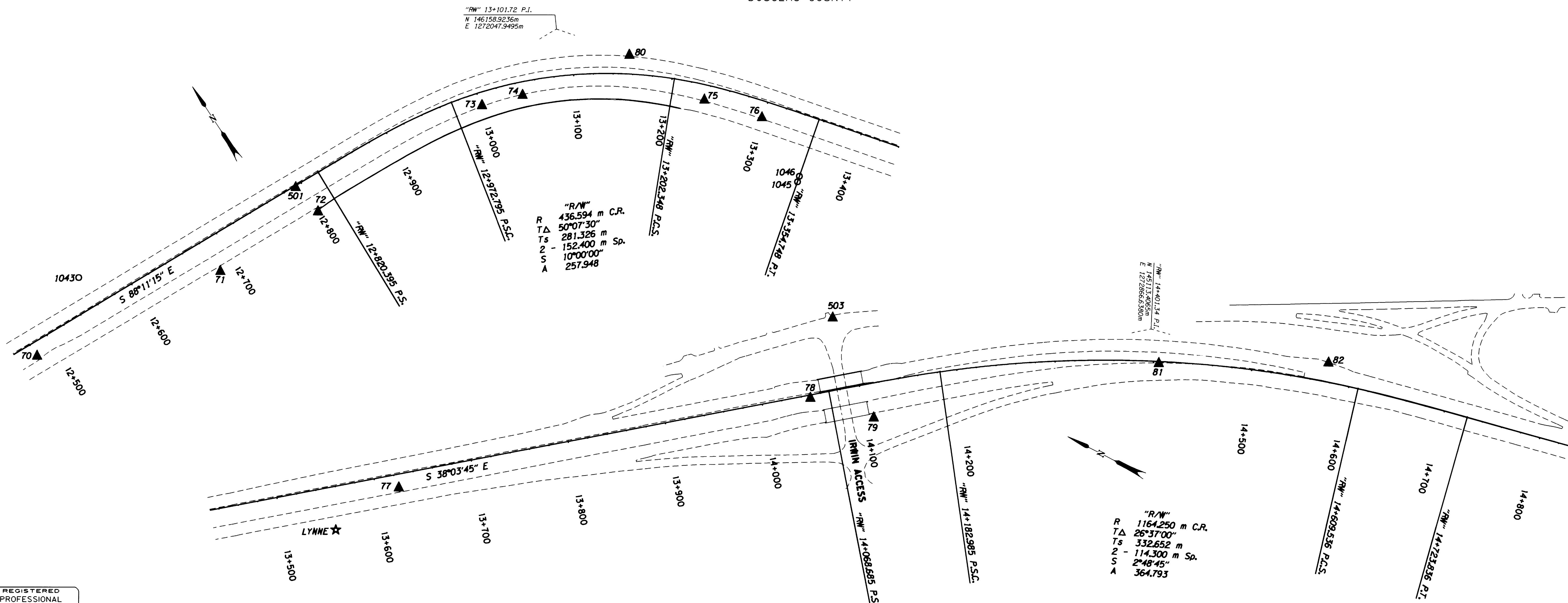


HORIZONTAL CONTROL, RECOVERY AND RETRACEMENT MAP

FOR THE OREGON DEPARTMENT OF TRANSPORTATION
LOCATED IN THE NW 1/4, SW 1/4, & SE 1/4 OF SECTION 21, THE NE 1/4 OF SECTION 28,
AND THE NW 1/4 OF SECTION 27, T. 30 S., R. 5 W., W.M.
DOUGLAS COUNTY

FILED
Date: 4-29-1999 By: JLP
This survey consists of: 11 Pgs.
Map: M129-39J
Narrative:
Corner Rpt.: (CS 65/19)
(previously filed control reports)
DOUGLAS COUNTY
SURVEYOR JR



REGISTERED
PROFESSIONAL
LAND SURVEYOR

Christine V. Blevins

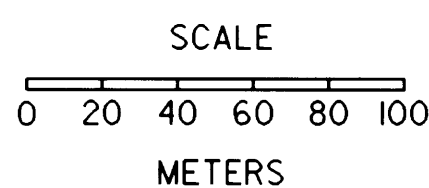
OREGON
JULY 19, 1994
CHRISTINE V. BLEVINS
2669

RENEWAL DATE 12-31-99

CHRISTINE V. BLEVINS P.L.S.
Oregon Department of Transportation
3500 N.W. Stewart Parkway
Roseburg, Oregon 97470

LEGEND

- ▲ SET MONUMENT
- FOUND MONUMENT
- ★ FOUND GPS MONUMENT



SCALE: 1:2000

CONTROL NETWORK AND FOUND MONUMENTS

POINT	DESCRIPTION	NORTHING	EASTING	ELEV.
1043	FOUND 5/8" (16 MM) I.R. SET IN CONCRETE 35 MM ABOVE SURFACE R/W STA. 412+00.00 P.O.T. 34.14 M (112 FT.) LT.. (GOOD CONDITION)	146209.35	1271505.069	
1045	FOUND 5/8" (16 MM) I.R. SET IN CONCRETE 30 MM ABOVE SURFACE R/W STA. 438+16.03 P.T. 67.06 M (220 FT.) RT.. (GOOD CONDITION)	145896.143	1272168.552	
1046	FOUND 5/8" (16 MM) I.R. FLUSH WITH SURFACE, R/W STA. 438+16.03 P.T. 60.96 M (200 FT.) RT.. (GOOD CONDITION)	145899.923	1272173.333	
LYNNE	SET 75 MM DIA. BRASS DISK IN CONC. MONUMENT STAMPED "OREGON D.O.T. GEODETIC CONTROL PT. DO NOT DISTURB LYNNE" (DCSO CS65/19-1)	145755.038	1272308.587	
501	SET 13 MM SQ. I.R. 0.76 M LONG WITH 38 MM DIA. ALUM. CAP STAMPED "ODOT HORIZ. CONTROL 501"	146168.141	1271739.868	218.336
503	SET R.R. SPIKE IN ASPHALT CONCRETE AT THE N. CANYONVILLE INTERCHANGE ON EAST SIDE OF I-5 FREEWAY. (EXIT 99)	145406.715	1272731.091	216.116
70	SET 13 MM SQ. I.R. 0.76 M LONG WITH 38 MM DIA. ALUM. CAP STAMPED "ODOT HORIZ. CONTROL 70"	146166.143	1271427.224	219.845
71	SET 13 MM SQ. I.R. 0.76 M LONG WITH 38 MM DIA. ALUM. CAP STAMPED "ODOT HORIZ. CONTROL 71"	146137.758	1271629.559	223.230
72	SET 13 MM SQ. I.R. 0.76 M LONG WITH 38 MM DIA. ALUM. CAP STAMPED "ODOT HORIZ. CONTROL 72"	146135.097	1271745.342	225.743
73	SET 13 MM SQ. I.R. 0.76 M LONG WITH 38 MM DIA. ALUM. CAP STAMPED "ODOT HORIZ. CONTROL 73"	146135.906	1271943.125	226.305

CONTROL NETWORK AND FOUND MONUMENTS

POINT	DESCRIPTION	NORTHING	EASTING	ELEV.
74	SET 13 MM SQ. I.R. 0.76 M LONG WITH 38 MM DIA. ALUM. CAP STAMPED "ODOT HORIZ. CONTROL 74"	146122.046	1271983.263	226.561
75	SET 13 MM SQ. I.R. 0.76 M LONG WITH 38 MM DIA. ALUM. CAP STAMPED "ODOT HORIZ. CONTROL 75"	146018.263	1272135.300	222.897
76	SET 13 MM SQ. I.R. 0.76 M LONG WITH 38 MM DIA. ALUM. CAP STAMPED "ODOT HORIZ. CONTROL 76"	145971.569	1272174.465	221.528
77	SET 13 MM SQ. I.R. 0.76 M LONG WITH 38 MM DIA. ALUM. CAP STAMPED "ODOT HORIZ. CONTROL 77"	145718.628	1272377.160	217.396
78	SET 13 MM SQ. I.R. 0.76 M LONG WITH 38 MM DIA. ALUM. CAP STAMPED "ODOT HORIZ. CONTROL 78"	145389.487	1272647.994	221.257
79	SET 13 MM SQ. I.R. 0.76 M LONG WITH 38 MM DIA. ALUM. CAP STAMPED "ODOT HORIZ. CONTROL 79"	145323.297	1272659.449	222.067
80	SET 13 MM SQ. I.R. 0.76 M LONG WITH 38 MM DIA. ALUM. CAP STAMPED "ODOT HORIZ. CONTROL 80"	146097.640	1272096.154	219.167
81	SET 13 MM SQ. I.R. 0.76 M LONG WITH 38 MM DIA. ALUM. CAP STAMPED "ODOT HORIZ. CONTROL 81"	145091.195	1272840.124	227.578
82	SET 13 MM SQ. I.R. 0.76 M LONG WITH 38 MM DIA. ALUM. CAP STAMPED "ODOT HORIZ. CONTROL 82"	144938.186	1272918.880	230.580

**COUNTY SURVEYORS FILE DATA
DO NOT REMOVE FROM OFFICE**

NOTE: ALL COORDINATES ON THIS MAP ARE METRIC, ON A LOCAL DATUM PLANE, WHICH REPRESENTS TRUE GROUND DISTANCES. TO CONVERT COORDINATES TO ENGLISH, DIVIDE THE METRIC COORDINATES BY 0.3048

OREGON DEPARTMENT OF TRANSPORTATION
**HORIZONTAL CONTROL, RECOVERY,
AND RETRACEMENT MAP**
MYRTLE CREEK - CANYONVILLE SEC. (1-5)
DOUGLAS COUNTY

ODOT
3500 Stewart Parkway, Suite 140
Roseburg, Oregon 97470