

# HORIZONTAL CONTROL, RECOVERY AND RETRACEMENT MAP

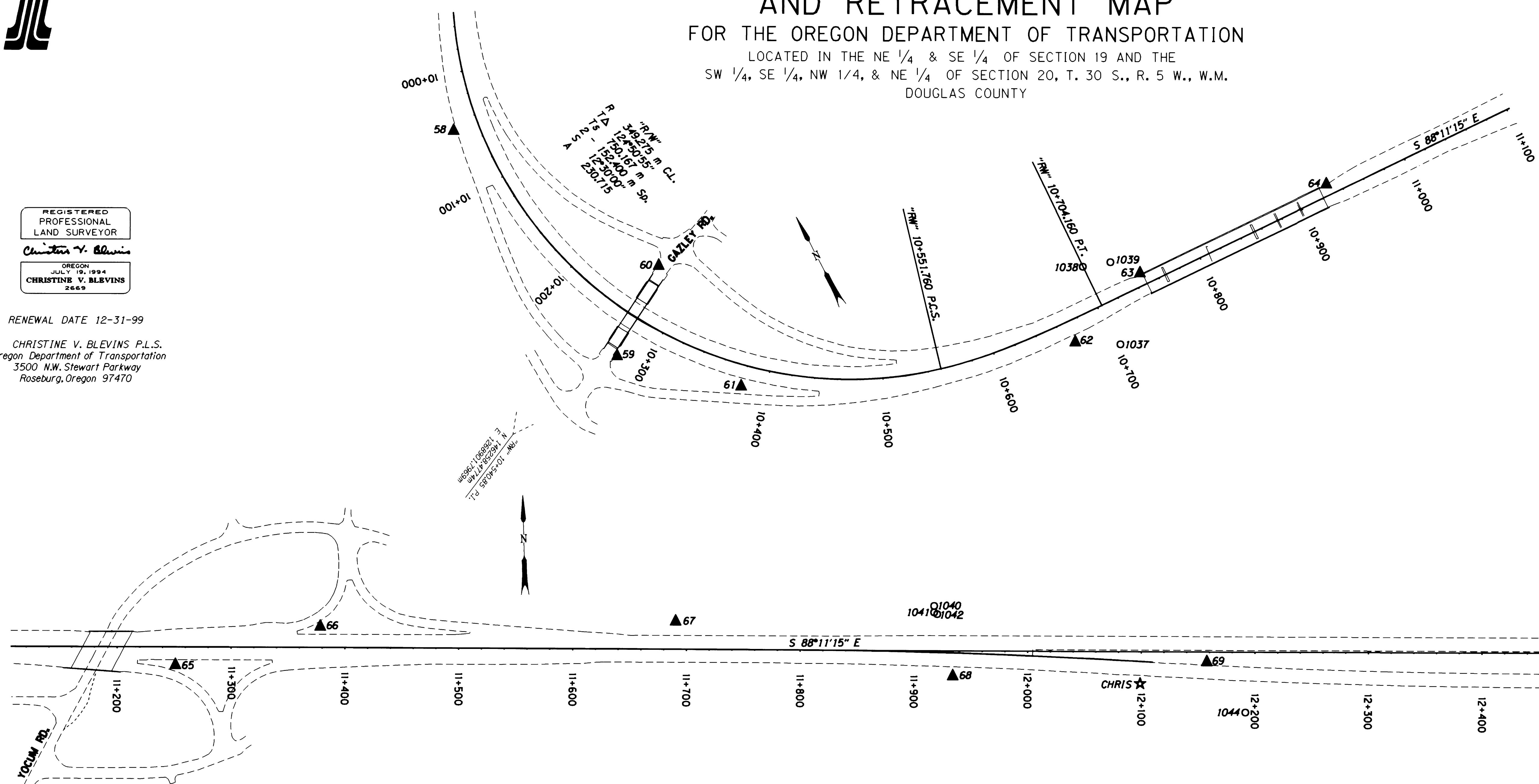
FOR THE OREGON DEPARTMENT OF TRANSPORTATION  
 LOCATED IN THE NE 1/4 & SE 1/4 OF SECTION 19 AND THE  
 SW 1/4, SE 1/4, NW 1/4, & NE 1/4 OF SECTION 20, T. 30 S., R. 5 W., W.M.  
 DOUGLAS COUNTY

FILED  
 Date: 4-29-1999 By: JP  
 This survey consists of: 11 Pgs.  
 Map: M129-391  
 Narrative:  
 Corner Rpt: (CS 65/12)  
 (previously filed control reports)  
 DOUGLAS COUNTY SURVEYOR

REGISTERED  
 PROFESSIONAL  
 LAND SURVEYOR  
 Christine V. Blevins  
 OREGON  
 JULY 19, 1994  
 CHRISTINE V. BLEVINS  
 2669

RENEWAL DATE 12-31-99

CHRISTINE V. BLEVINS P.L.S.  
 Oregon Department of Transportation  
 3500 N.W. Stewart Parkway  
 Roseburg, Oregon 97470



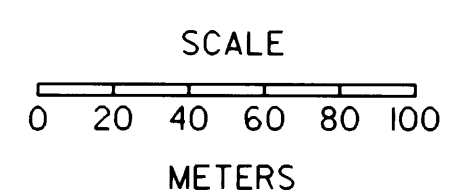
CONTROL NETWORK AND FOUND MONUMENTS

POINT	DESCRIPTION	NORTHING	EASTING	ELEV.
1037	FOUND 3/4" (19 MM) I.R. SET IN CONCRETE 30 MM ABOVE SURFACE R/W STA. 351+17.52 P.T. 38.1 M (125 FT.) RT. (GOOD CONDITION)	146196.673	1269650.052	
1038	FOUND 3/4" (19 MM) I.R. SET IN CONCRETE 30 MM ABOVE SURFACE R/W STA. 351+17.52 P.T. 38.1 M (125 FT.) LT. (GOOD CONDITION)	146272.852	1269652.444	
1039	FOUND 2 1/2" (64 MM) BRASS DISK 0.46 M ABOVE SURFACE STAMPED COUNTY SURVEYORS OFFICE 1960 T30S R5W 1/4S19 : S20" (GOOD CONDITION)	146265.171	1269675.806	
1040	FOUND 5/8" (16 MM) I.R. WITH A 1 1/2" (38 MM) DIA. ALUM. CAP STAMPED "OREG. STATE HWY DIV." FLUSH W/SURFACE R/W STA. 391+00.00 P.O.T. 38.1 M (125 FT.) LT. (GOOD CONDITION)	146235.937	1270865.545	
1041	FOUND 5/8" (16 MM) I.R., 60 MM ABOVE SURFACE, R/W STA. 391+00.00 P.O.T., 34.14 M (112 FT.) LT. (GOOD CONDITION)	146230.109	1270865.377	
1042	FOUND 2 1/2" (64 MM) BRASS DISK 0.13 M ABOVE SURFACE STAMPED COUNTY SURVEYORS OFFICE 1964 DLC44 INTL DEP. L55" (GOOD CONDITION)	146228.603	1270867.976	
1044	FOUND 5/8" (16 MM) I.R. SET IN CONCRETE 40 MM BELOW SURFACE R/W STA. 400+00.00 P.O.T. 53.34 M (175 FT.) LT. (GOOD CONDITION)	146134.392	1271136.674	
CHRIS	SET 75 MM DIA. BRASS DISK IN CONC. MONUMENT STAMPED "OREGON D.O.T. GEODETIC CONTROL PT. DO NOT DISTURB CHRIS"	146162.550	1271044.866	
58	SET 13 MM SQ. I.R. 0.76 M LONG WITH 38 MM DIA. ALUM. CAP STAMPED "ODOT HORIZ. CONTROL 58"	146636.563	1269218.587	207.685
59	SET 13 MM SQ. I.R. 0.76 M LONG WITH 38 MM DIA. ALUM. CAP STAMPED "ODOT HORIZ. CONTROL 59"	146393.589	1269253.709	218.219

CONTROL NETWORK AND FOUND MONUMENTS

POINT	DESCRIPTION	NORTHING	EASTING	ELEV.
60	SET 13 MM SQ. I.R. 0.76 M LONG WITH 38 MM DIA. ALUM. CAP STAMPED "ODOT HORIZ. CONTROL 60"	146447.450	1269323.058	217.232
61	SET 13 MM SQ. I.R. 0.76 M LONG WITH 38 MM DIA. ALUM. CAP STAMPED "ODOT HORIZ. CONTROL 61"	146319.323	1269337.848	213.421
62	SET 13 MM SQ. I.R. 0.76 M LONG WITH 38 MM DIA. ALUM. CAP STAMPED "ODOT HORIZ. CONTROL 62"	146217.841	1269616.306	213.268
63	SET 13 MM SQ. I.R. 0.76 M LONG WITH 38 MM DIA. ALUM. CAP STAMPED "ODOT HORIZ. CONTROL 63"	146245.687	1269695.051	212.373
64	SET 13 MM SQ. I.R. 0.76 M LONG WITH 38 MM DIA. ALUM. CAP STAMPED "ODOT HORIZ. CONTROL 64"	146238.778	1269876.492	212.731
65	SET 13 MM SQ. I.R. 0.76 M LONG WITH 38 MM DIA. ALUM. CAP STAMPED "ODOT HORIZ. CONTROL 65"	146203.040	1270197.828	213.104
66	SET 13 MM SQ. I.R. 0.76 M LONG WITH 38 MM DIA. ALUM. CAP STAMPED "ODOT HORIZ. CONTROL 66"	146233.217	1270325.866	213.473
67	SET 13 MM SQ. I.R. 0.76 M LONG WITH 38 MM DIA. ALUM. CAP STAMPED "ODOT HORIZ. CONTROL 67"	146229.517	1270638.156	221.249
68	SET 13 MM SQ. I.R. 0.76 M LONG WITH 38 MM DIA. ALUM. CAP STAMPED "ODOT HORIZ. CONTROL 68"	146174.995	1270880.257	216.658
69	SET 13 MM SQ. I.R. 0.76 M LONG WITH 38 MM DIA. ALUM. CAP STAMPED "ODOT HORIZ. CONTROL 69"	146181.376	1271103.987	214.948

- LEGEND
- ▲ SET MONUMENT
  - FOUND MONUMENT
  - ★ FOUND GPS MONUMENT



SCALE: 1:2000

COUNTY SURVEYORS FILE DATA  
 DO NOT REMOVE FROM OFFICE

NOTE: ALL COORDINATES ON THIS MAP ARE METRIC, ON A LOCAL DATUM PLANE, WHICH REPRESENTS TRUE GROUND DISTANCES. TO CONVERT COORDINATES TO ENGLISH, DIVIDE THE METRIC COORDINATES BY 0.3048

OREGON DEPARTMENT OF TRANSPORTATION  
**HORIZONTAL CONTROL, RECOVERY, AND RETRACEMENT MAP**  
 MYRTLE CREEK - CANYONVILLE SEC. (1-5)  
 DOUGLAS COUNTY  
 ODOT  
 3500 Stewart Parkway, Suite 140  
 Roseburg, Oregon 97470