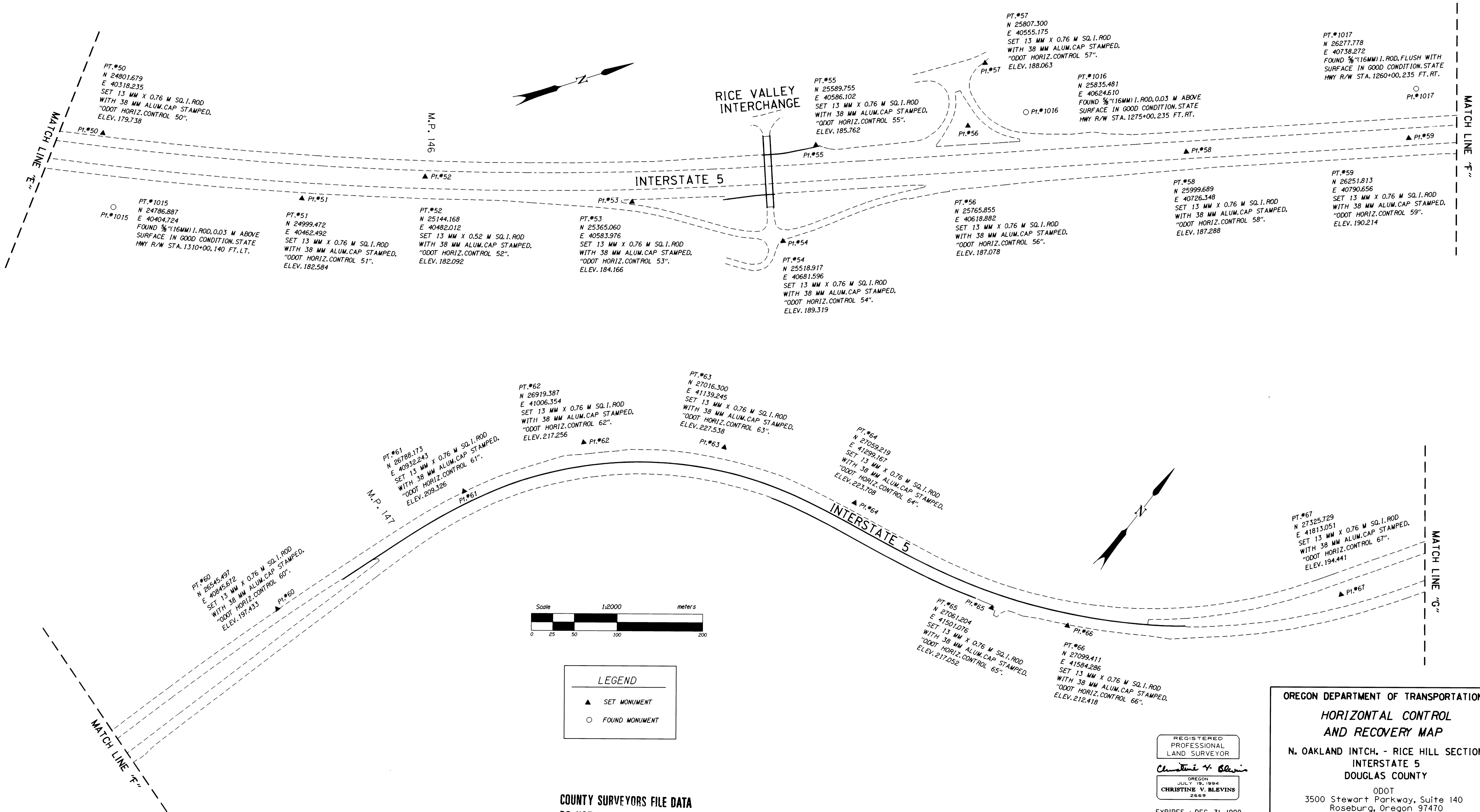


HORIZONTAL CONTROL AND RECOVERY MAP

LOCATED IN THE SW 1/4, SE 1/4, & NE 1/4 OF SECTION 5, T. 24 S., R. 5 W. AND THE SE 1/4 & NE 1/4 OF SECTION 32 & THE NW 1/4 OF SECTION 33, T. 23 S., R. 5 W., W.M. DOUGLAS COUNTY

FILED
Date: 1-27-1999, By: J.P.
This survey consists of:
Map: M/129-32 D
Narrative:
Corner Pp:
DOUGLAS COUNTY SURVEYOR, c.s.



LEGEND

- ▲ SET MONUMENT
- FOUND MONUMENT

COUNTY SURVEYORS FILE DATA
DO NOT REMOVE FROM OFFICE

REGISTERED PROFESSIONAL LAND SURVEYOR
Christine V. Blevins
OREGON JULY 19, 1994
CHRISTINE V. BLEVINS 2669
EXPIRES : DEC. 31, 1999

OREGON DEPARTMENT OF TRANSPORTATION
HORIZONTAL CONTROL AND RECOVERY MAP
N. OAKLAND INTCH. - RICE HILL SECTION
INTERSTATE 5
DOUGLAS COUNTY
ODOT
3500 Stewart Parkway, Suite 140
Roseburg, Oregon 97470

PROJECT KEY *08711 SHEET 4 OF 5