

# RIGHT OF WAY BOUNDARY MONUMENTATION MAP

LOCATED IN THE NW 1/4 & NE 1/4 OF SECTION 14,  
T22S, R9W, WILLAMETTE MERIDIAN  
DOUGLAS COUNTY, OREGON

FILED  
Date: 8/15/2000 By: J.P.  
This survey consists of:  
Map: M132-42  
Narrative:  
Corner Rpt:  
DOUGLAS COUNTY  
J.P. SURVEYOR

**LEGEND**

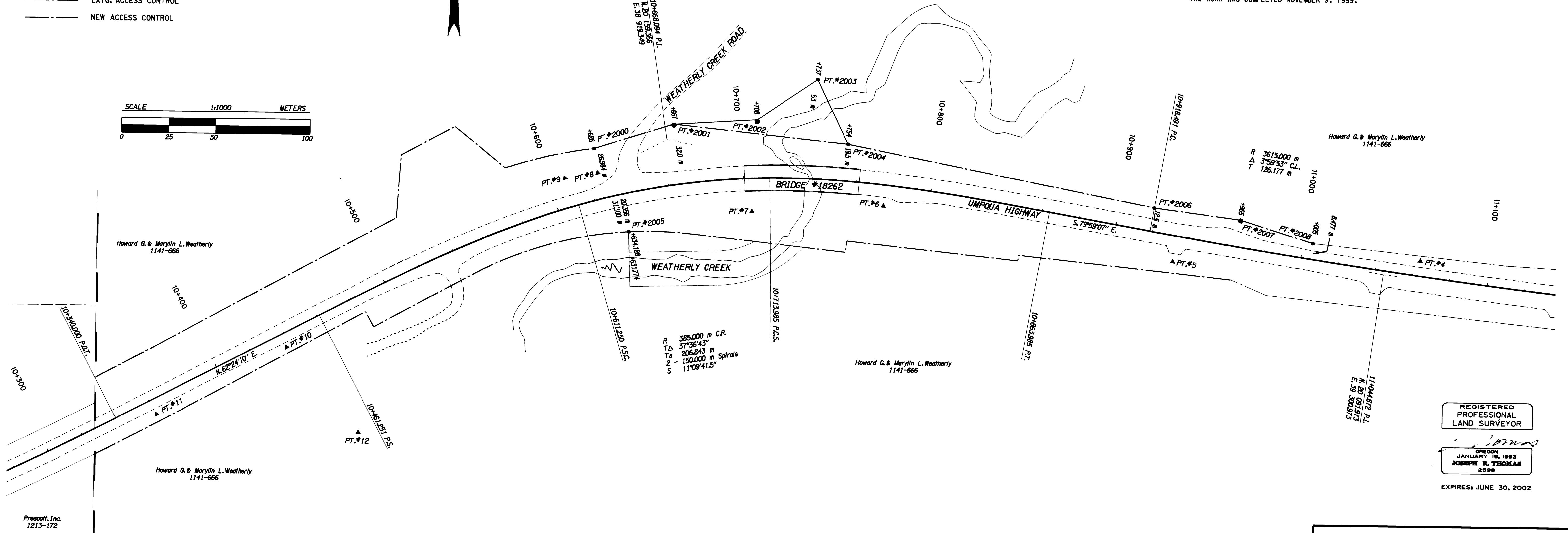
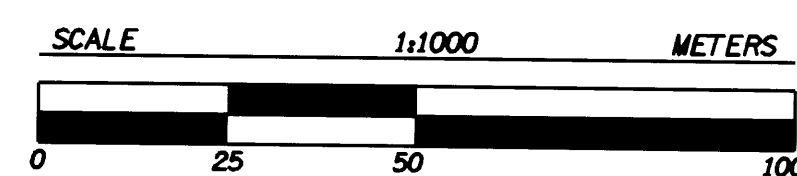
- SET 16 MM X 762 MM IRON ROD WITH 38 MM ALUMINUM CAP STAMPED "ODOT RIGHT- OF- WAY"
  - SET 16 MM X 762 MM IRON ROD WITH 38 MM ALUMINUM CAP STAMPED "OREG. STATE HWY. DIV. RP". (SEE TABLE BELOW)
  - ▲ FOUND NETWORK MONUMENTS (SEE COUNTY SURVEY M129-6)
- EXTG. RIGHT OF WAY LINE  
— NEW RIGHT OF WAY LINE  
- - - - - EXTG. ACCESS CONTROL  
- - - - - NEW ACCESS CONTROL

**SURVEY NARRATIVE**

THE PURPOSE OF THIS SURVEY WAS TO MONUMENT THE NEW CENTERLINE AND THE NEW RIGHT OF WAY PURCHASED FOR AN OREGON DEPARTMENT OF TRANSPORTATION HIGHWAY PROJECT CALLED "WEATHERLY CREEK BRIDGE AND PARADISE CREEK BRIDGE SECTIONS" AT WEATHERLY CREEK BRIDGE. THIS SURVEY IS BASED ON ODOT DRAWING 108-11-12. THE BASIS OF BEARING WAS TAKEN FROM THE "HORIZONTAL CONTROL, RECOVERY, AND RETRACEMENT MAP" FILED AT THE DOUGLAS COUNTY SURVEYOR'S OFFICE AS MAP M129-6. THE NEW MONUMENTS WERE SET FROM PREVIOUSLY SET ODOT CONTROL MONUMENTS PER SURVEY M129-6. COORDINATES ON THIS MAP ARE ASSUMED.

AN ODOT SURVEY CREW PERFORMED THE WORK USING A LEICA TCA1800 TOTAL STATION (SERIAL #416526) WITH AN INTEGRATED EDM. THE RADIAL STAKEOUT METHOD WAS USED TO SET THE NEW MONUMENTS. THE TCA1800 HAS A STANDARD ANGULAR ERROR OF +/- 1 SECOND, AND A STANDARD DISTANCE ERROR OF +/- 2 MM, +/- 2 PPM.

THE WORK WAS COMPLETED NOVEMBER 9, 1999.



**REFERENCE POINTS (R.P.) SET NEAR RIGHT OF WAY (R/W)**

POINT	STATION	R.P. OFFSET	R/W OFFSET	NORTHING	EASTING
2001	10+667.000	31.500 m Lt.	32.000 m Lt.	20167.198	38922.935
2002	10+708.000	30.000 m Lt.	31.000 m Lt.	20169.631	38967.147
2007	10+965.000	14.000 m Lt.	14.300 m Lt.	20119.940	39224.824

**SET RIGHT OF WAY MONUMENT LIST**

POINT	STATION	OFFSET	NORTHING	EASTING
2000	10+626.000	26.984 m Lt.	20154.217	38880.555
2003	10+737.000	53.000 m Lt.	20192.591	38999.071
2004	10+754.000	19.500 m Lt.	20158.175	39015.547
2005	10+634.128	20.356 m Rt.	20110.147	38899.681
2006	10+918.491	12.500 m Lt.	20126.226	39178.889
2008	11+005.000	8.477 m Lt.	20108.274	39263.352

REGISTERED PROFESSIONAL LAND SURVEYOR

JOSEPH E. THOMAS  
JULY 19, 1993  
EXPIRES: JUNE 30, 2002

OREGON DEPARTMENT OF TRANSPORTATION  
**RIGHT OF WAY BOUNDARY MONUMENTATION MAP**  
WEATHERLY CREEK BRIDGE  
DOUGLAS COUNTY UMPQUA HIGHWAY  
ADDRESS - 3500 STEWART PARKWAY, SUITE 140  
ROSEBURG, OREGON 97470

Howard G. & Marilyn L. Weatherly 1141-666  
Howard G. & Marilyn L. Weatherly 1141-666  
Prescott, Inc. 1213-172  
Wm. Rackliffe D.L.C. No. 43  
John Hudson D.L.C. No. 44