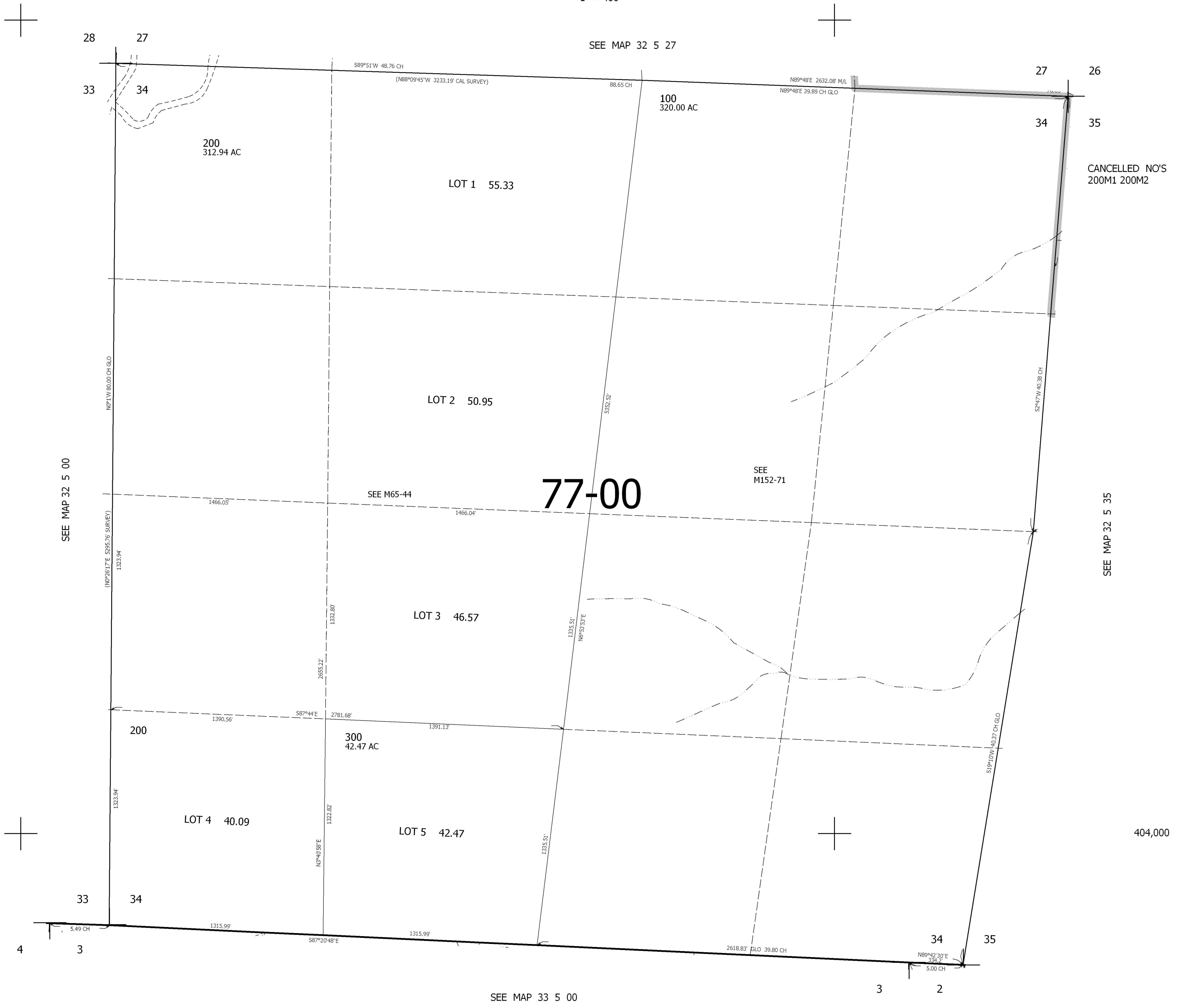


THIS MAP WAS PREPARED FOR
ASSESSMENT PURPOSE ONLY.

SEC.34 T.32S. R.5W. W.M.
DOUGLAS COUNTY
1" = 400'

REVISED ON

32 5 34



CANCELLED NO'S
200M1 200M2

SEE MAP 32 5 35

404,000

SEE MAP 33 5 00

4,177,000

32 5 34