

THIS MAP WAS PREPARED FOR ASSESSMENT PURPOSE ONLY.

NE1/4 SEC.20 T.32S. R.5W. W.M.
DOUGLAS COUNTY
1" = 200'

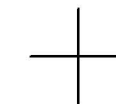
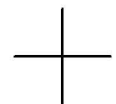
REVISED ON
5-19-94

32 5 20A

1/4 COR

17 16
20 21

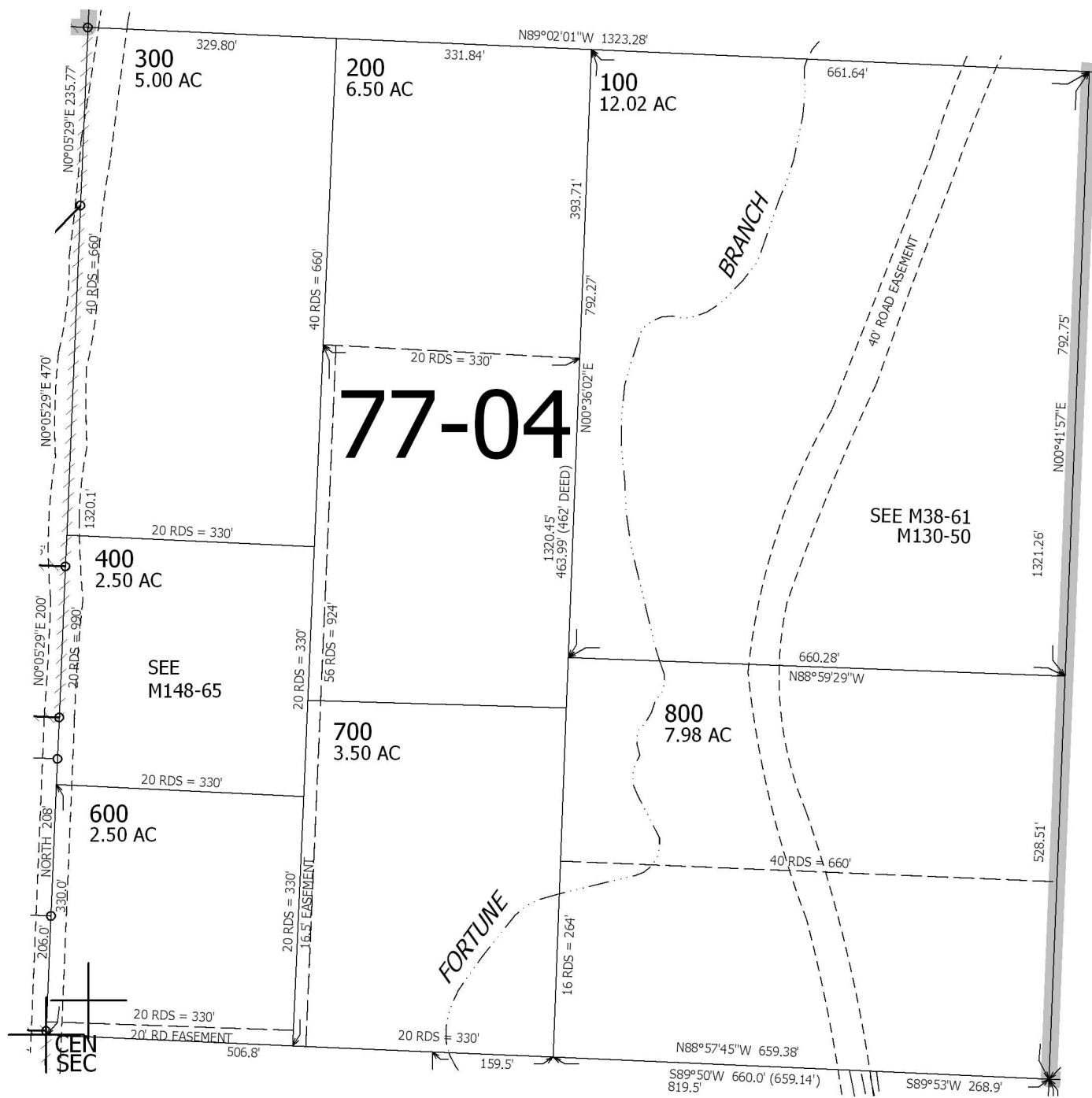
CANCELLED NO'S
500



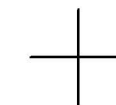
SEE MAP 32 5 20

SEE MAP 32 5 20

SEE MAP 32 5 20



SEE MAP 32 5 20D



1/4 COR

417,000

4,167,000

32 5 20A