

THIS MAP WAS PREPARED FOR ASSESSMENT PURPOSE ONLY.

SEC.14 T.32S. R.5W. W.M.
DOUGLAS COUNTY
1" = 400'

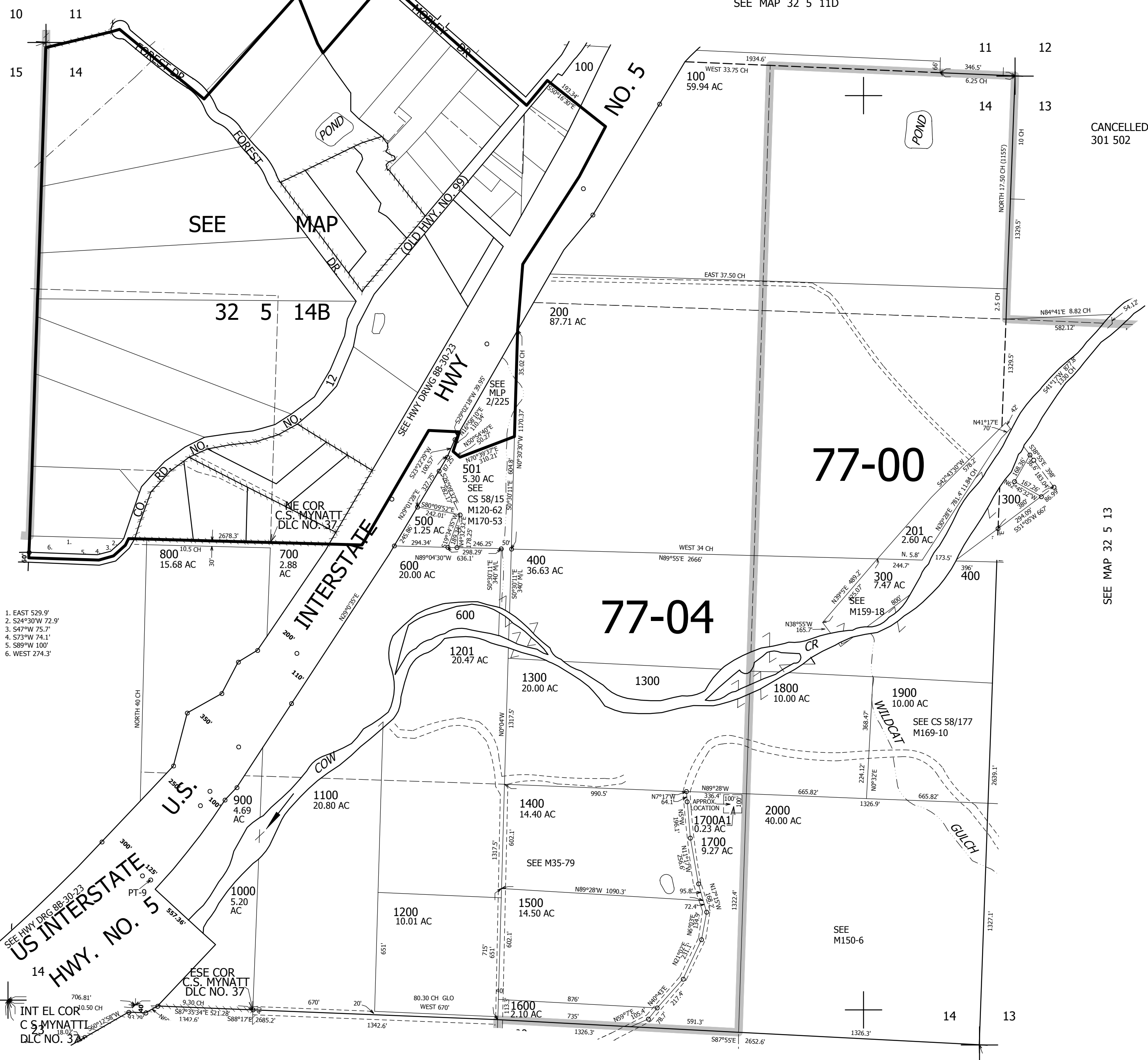
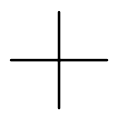
REVISED ON
3-3-16

32 5 14
& INDEX

SEE MAP 32 5 11C

SEE MAP 32 5 11D

CANCELLED NO'S
301 502



- 1. EAST 529.9'
- 2. S24°30'W 72.9'
- 3. S47°W 75.7'
- 4. S73°W 74.1'
- 5. S89°W 100'
- 6. WEST 274.3'

SEE MAP 32 5 15

SEE MAP 32 5 13

SEE MAP 32 5 23

4,183,000

419,000

32 5 14
& INDEX