

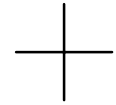
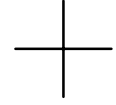
THIS MAP WAS PREPARED FOR ASSESSMENT PURPOSE ONLY.

SEC.28 T.32S. R.3W. W.M. DOUGLAS COUNTY

1" = 400'

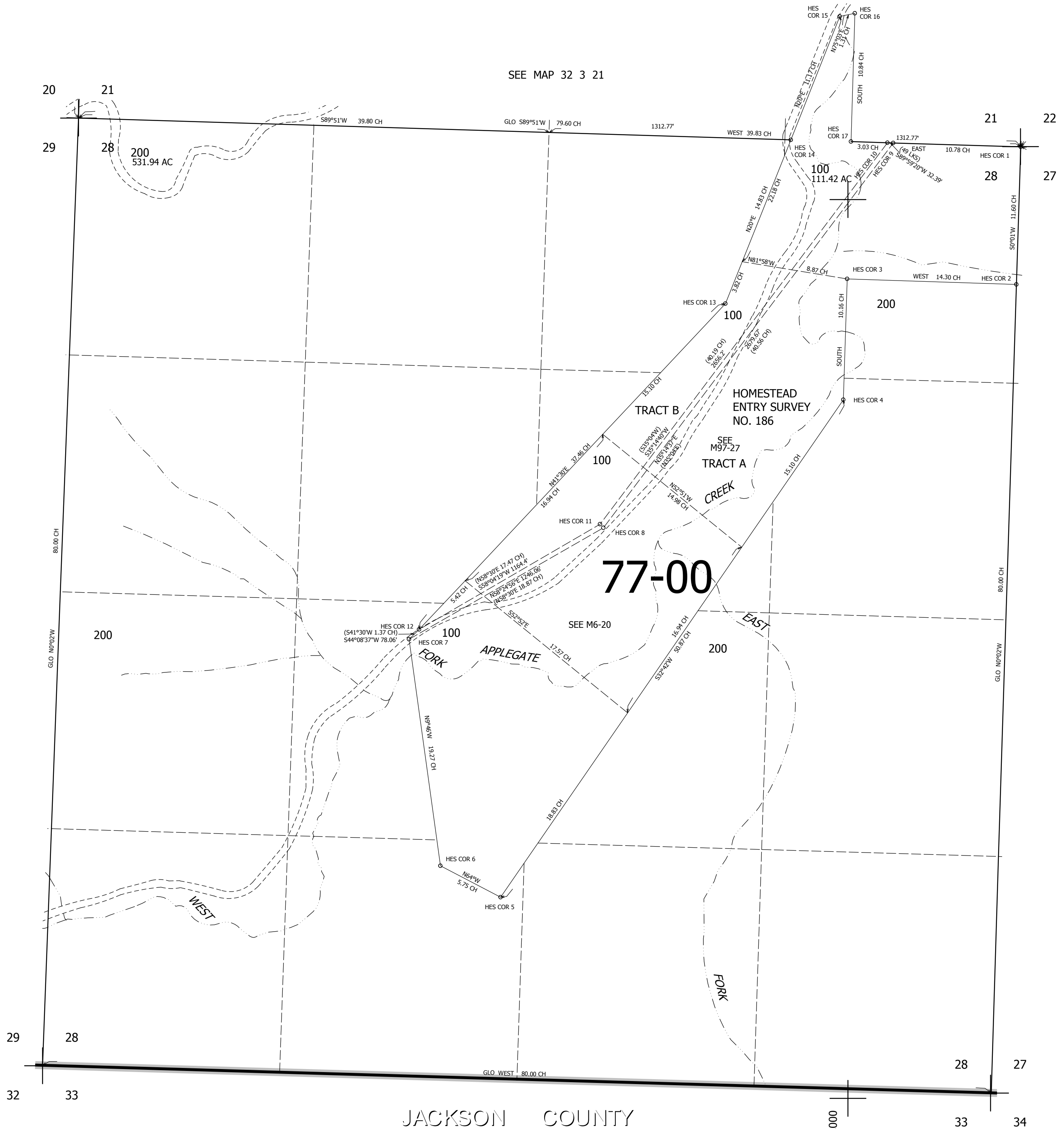
REVISED ON
3-7-13

32 3 28



SEE MAP 32 3 00

SEE MAP 32 3 00



CANCELLED NO'S
201

SEE MAP 32 3 00

406,000

32 3 28

JACKSON COUNTY

4,236,000