

THIS MAP WAS PREPARED FOR ASSESSMENT PURPOSE ONLY.

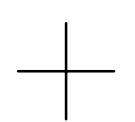
SW1/4 SEC.36 T30S. R.6W. W.M. DOUGLAS COUNTY

REVISED ON 11-5-12

30 6 36C

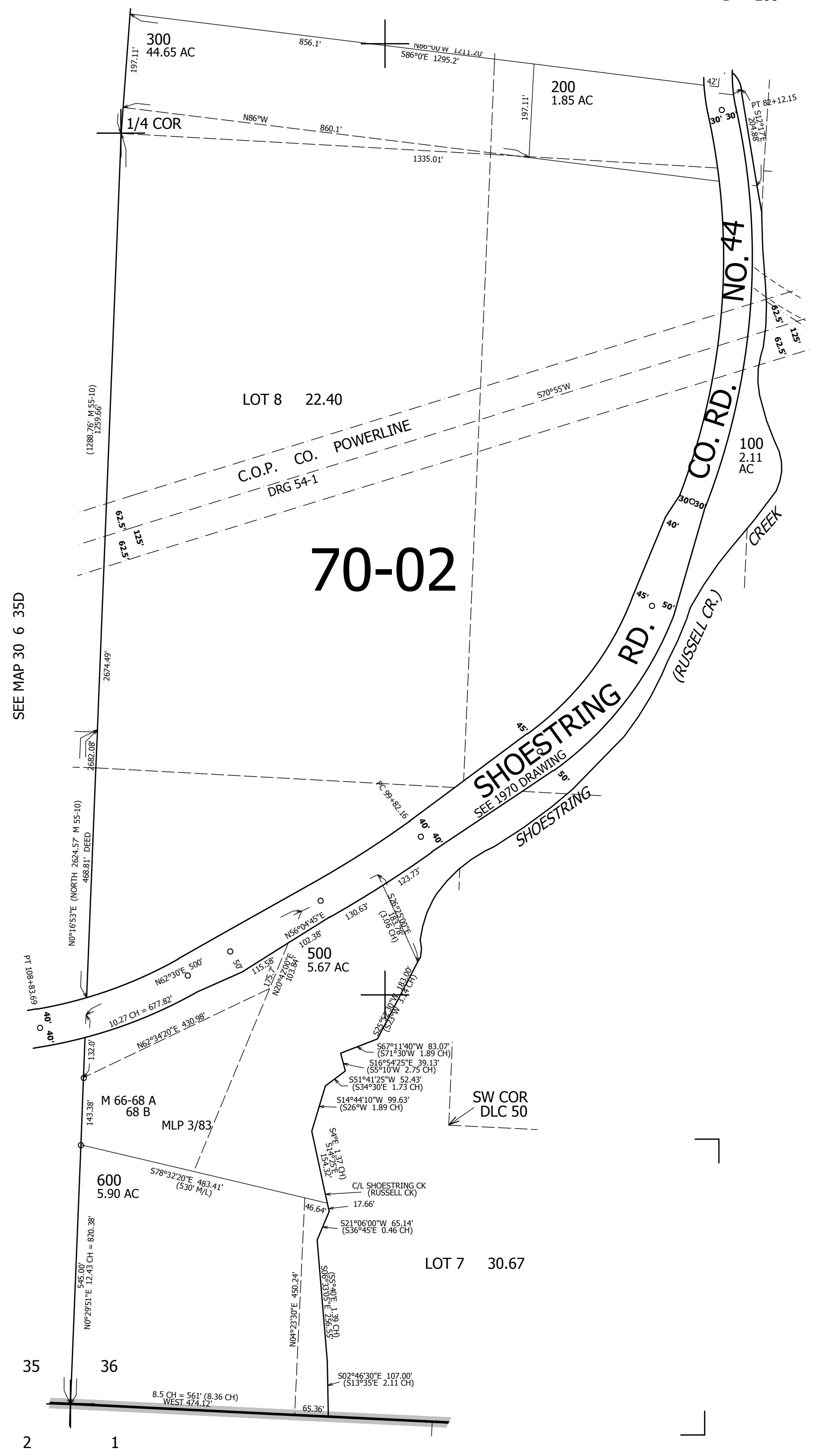
SEE MAP 30 6 36B

1" = 200'



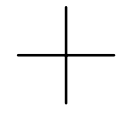
CANCELLED NO'S 400

CEN. SEC



SEE MAP 30 6 35D

SEE MAP 30 6 36



468,000

2 1

SEE MAP 31 6 00

1/4 COR.

4,156,000

30 6 36C