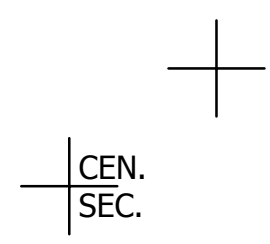


THIS MAP WAS PREPARED FOR ASSESSMENT PURPOSE ONLY.

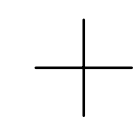
SE1/4 SEC.35 T30S. R.6W. W.M.
DOUGLAS COUNTY
1" = 200'

REVISED ON
12-13-16

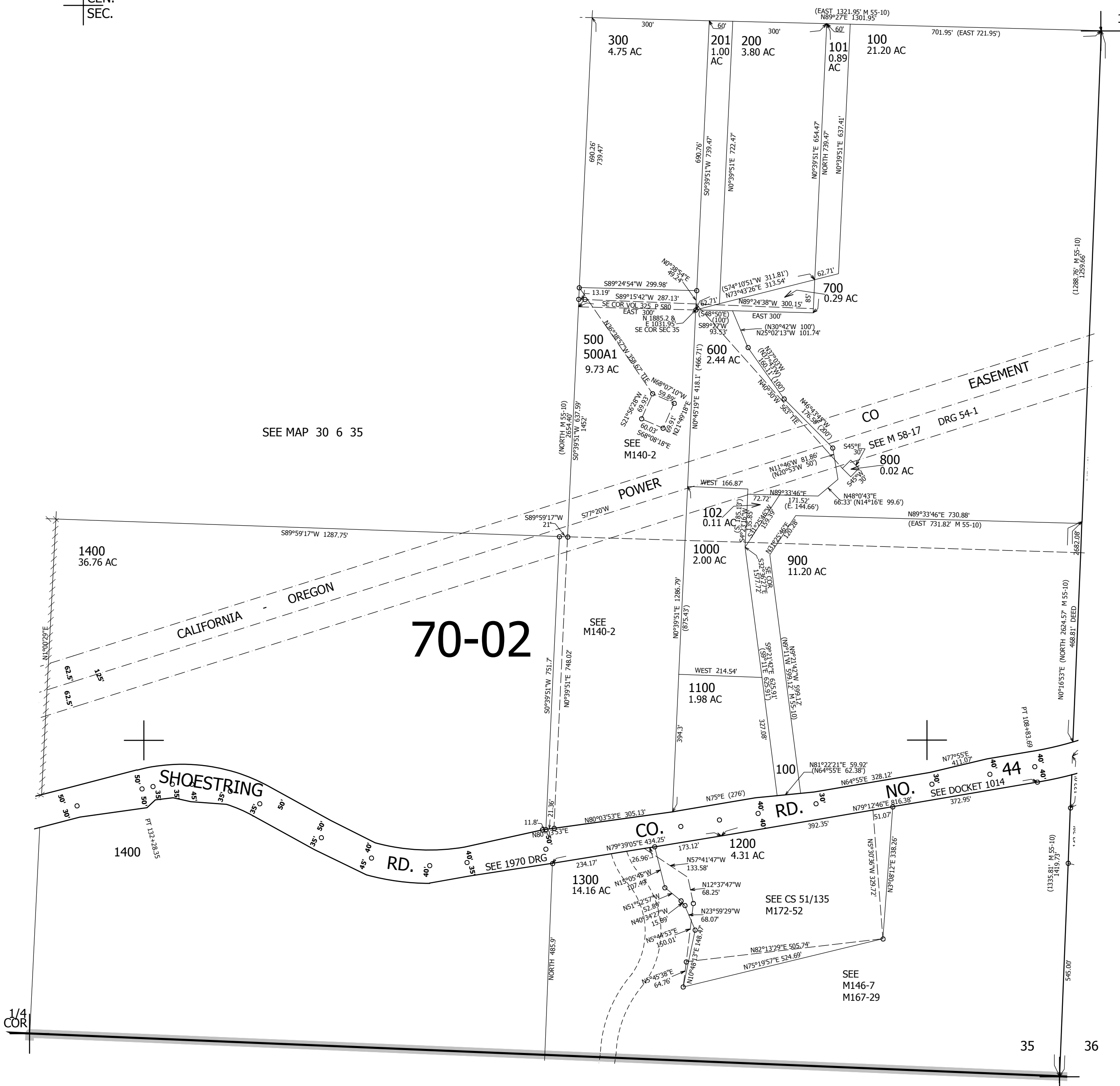
30 6 35D



SEE MAP 30 6 35



SEE MAP 30 6 35C



CANCELLED NO'S
1401 400 1201
1301

SEE MAP 30 6 36C

468,000

SEE MAP 31 6 2

4,153,000

30 6 35D