

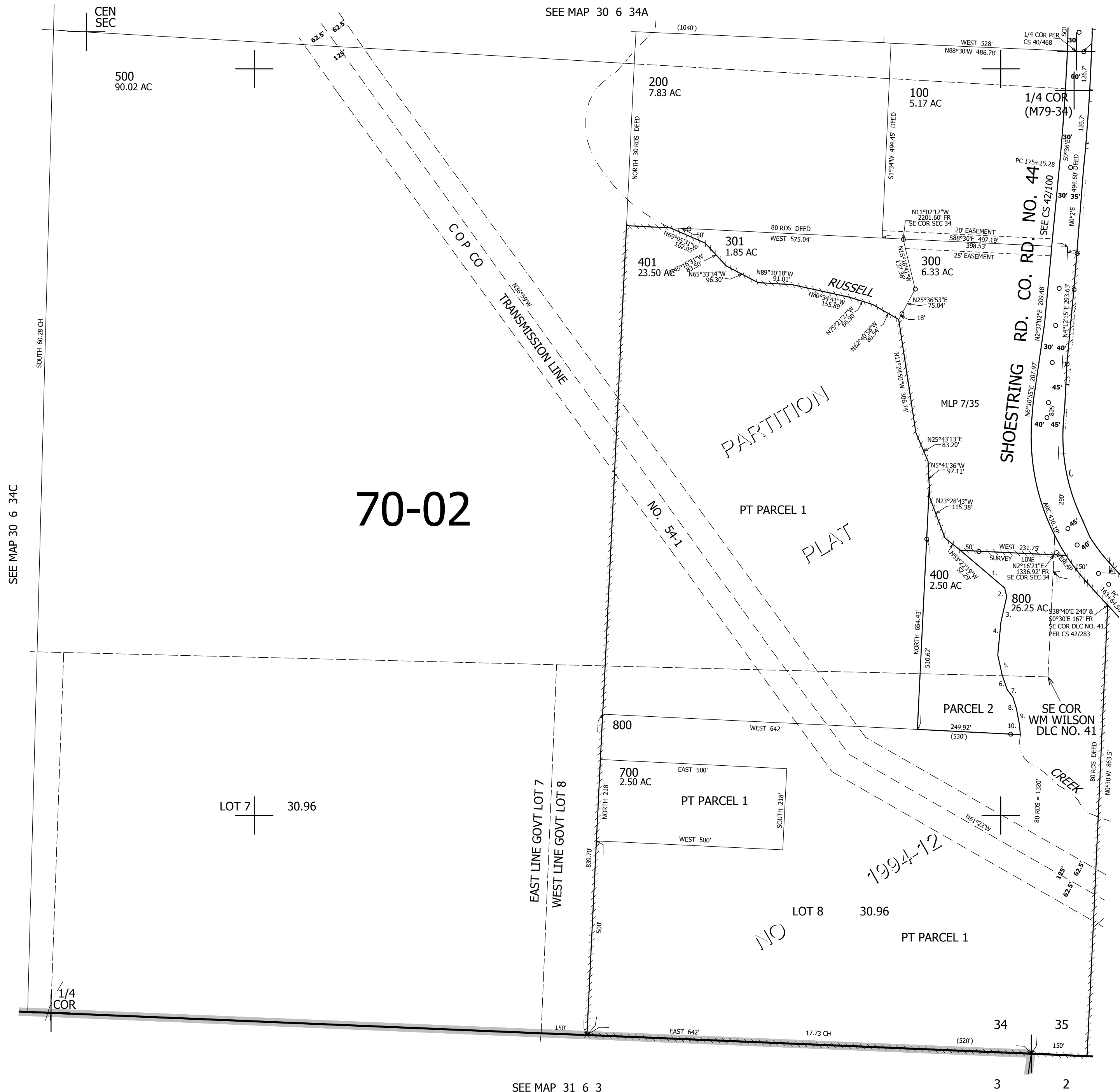
THIS MAP WAS PREPARED FOR ASSESSMENT PURPOSE ONLY.

SE1/4 SEC.34 T30S. R.6W. W.M.
DOUGLAS COUNTY

1" = 200'

REVISED ON
11-2-12

30 6 34D



CANCELLED NO'S
600

SEE MAP 30 6 35C

- PARCEL 400
1. S52°33'14"E 156.36'
 2. S16°16'34"E 24.02'
 3. S9°56'44"W 69.24'
 4. S2°58'26"W 88.86'
 5. S15°24'25"E 55.55'
 6. S21°44'58"E 40.74'
 7. S39°49'38"E 25.78'
 8. S19°16'33"E 31.16'
 9. S13°37'10"E 43.02'
 10. S8°46'58"E 27.93'

468,000

30 6 34D

SEE MAP 31 6 3

4,148,000