

THIS MAP WAS PREPARED FOR ASSESSMENT PURPOSE ONLY.

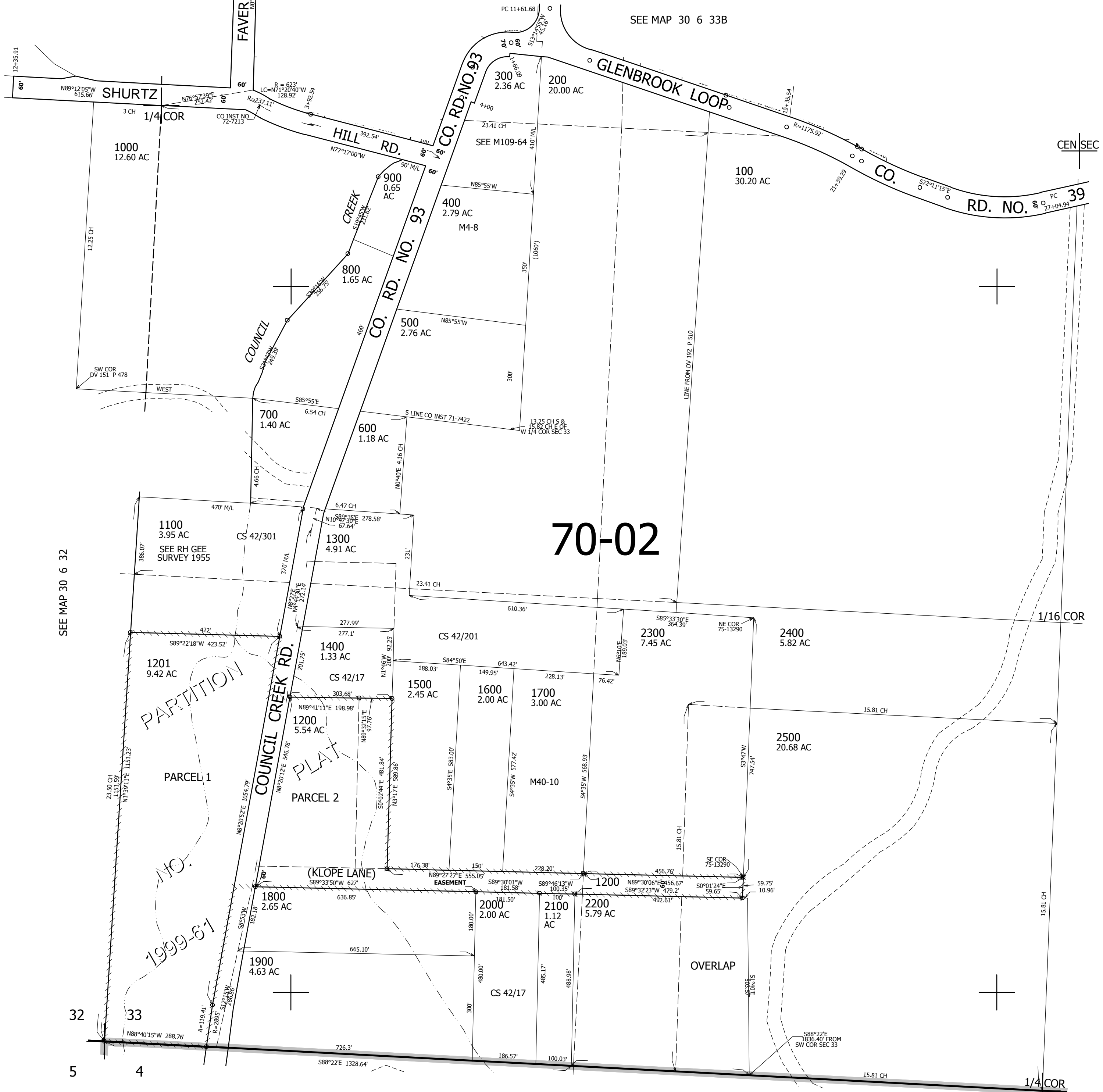
SW1/4 SEC.33 T30S. R.6W. W.M. DOUGLAS COUNTY

1" = 200'

REVISED ON 11-2-12

30 6 33C

CANCELLED NO'S



SEE MAP 30 6 32

SEE MAP 30 6 33

SEE MAP 31 6 4

4,140,000

468,000

30 6 33C