

THIS MAP WAS PREPARED FOR ASSESSMENT PURPOSE ONLY.

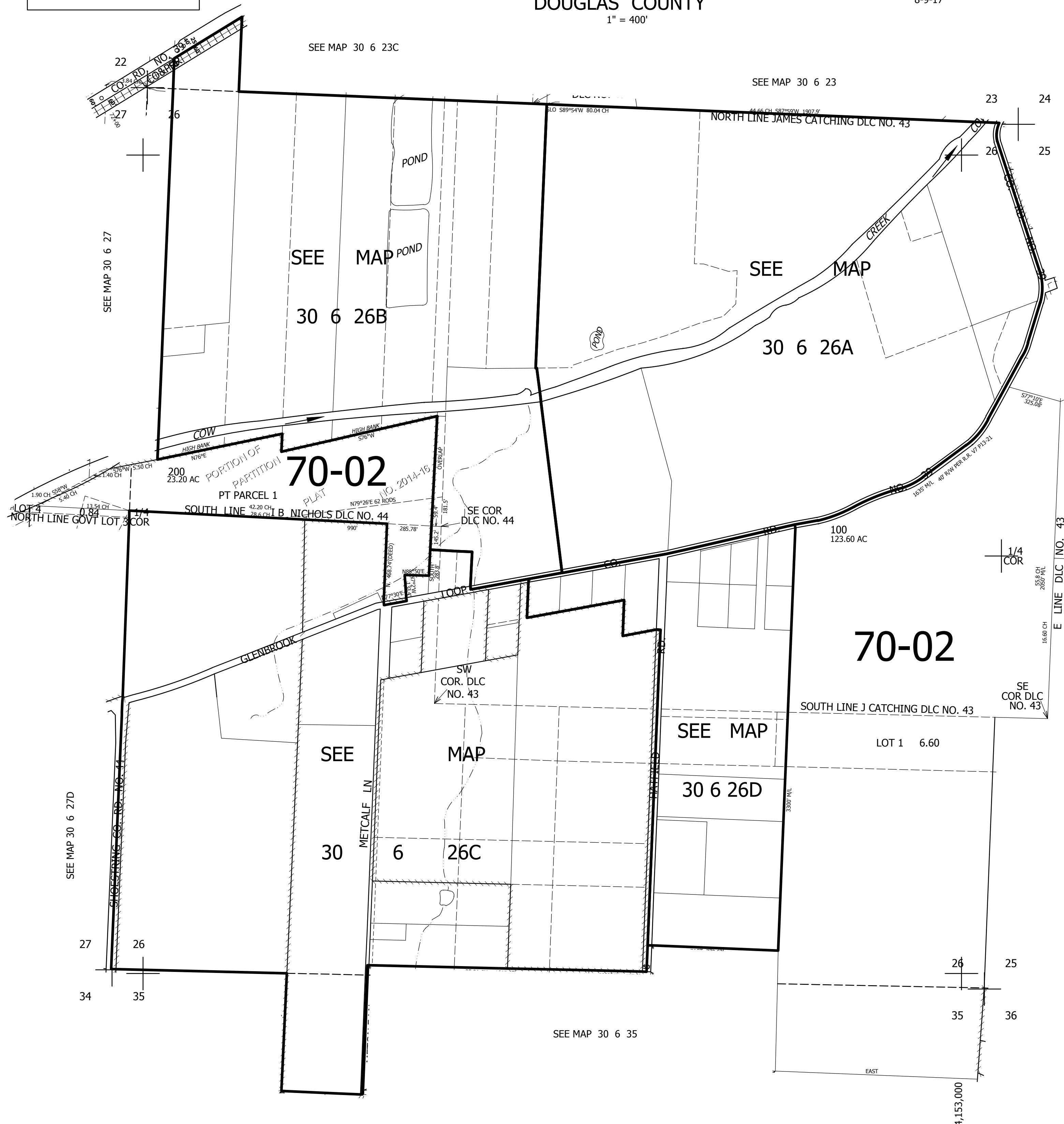
SEC.26 T30S. R.6W. W.M. DOUGLAS COUNTY

1" = 400'

REVISED ON
8-9-17

30 6 26 & INDEX

CANCELLED NO'S



SEE MAP 30 6 26B

SEE MAP 30 6 25

472,500

30 6 26 & INDEX