

THIS MAP WAS PREPARED FOR ASSESSMENT PURPOSE ONLY.

SE1/4 NW1/4 SEC.24 T30S. R.6W. W.M. DOUGLAS COUNTY

1" = 100'

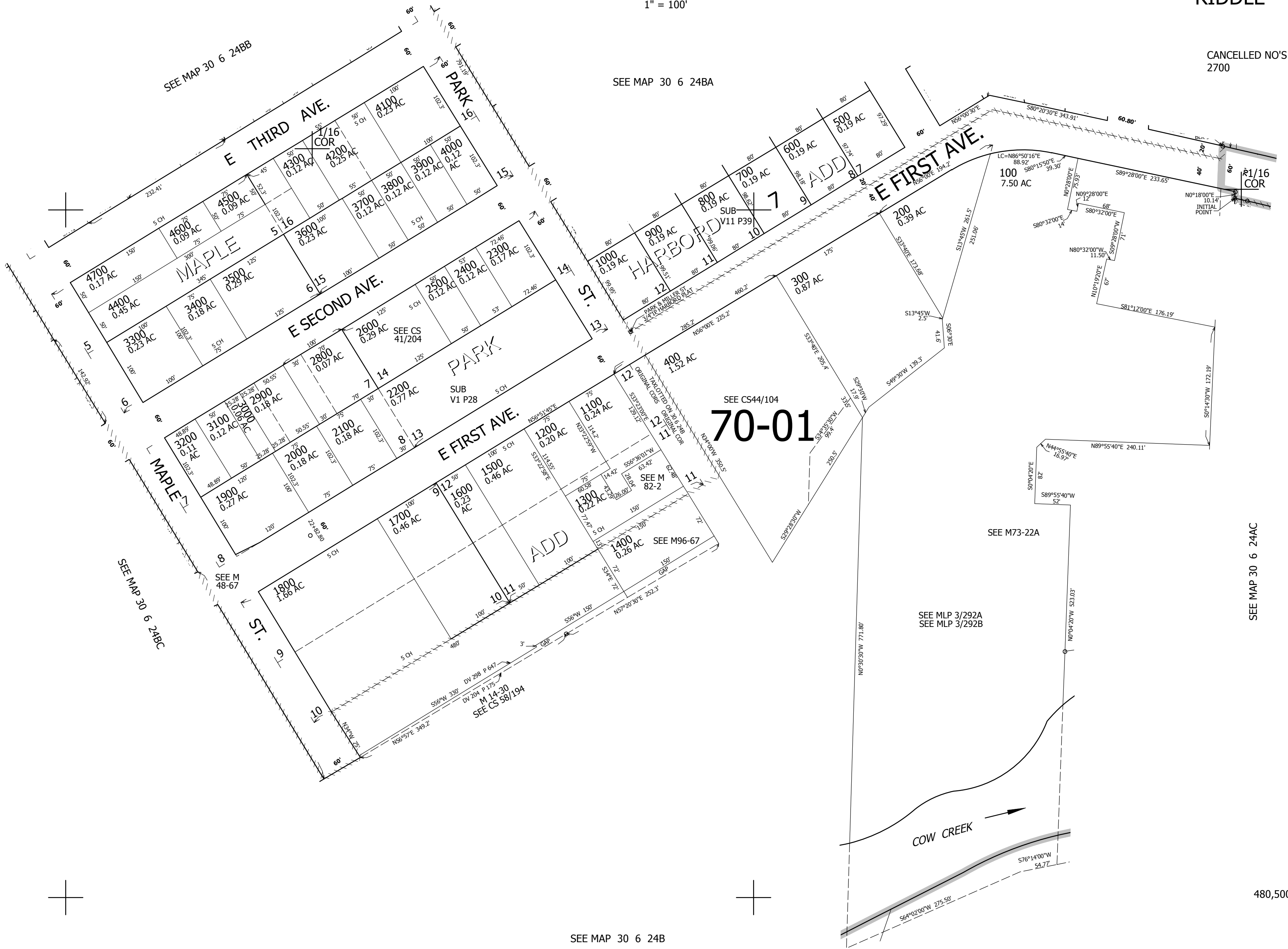
REVISED ON 5-23-18

30 6 24BD RIDDLE

CANCELLED NO'S 2700

SEE MAP 30 6 24BB

SEE MAP 30 6 24BA



70-01

SEE CS44/104

SEE M73-22A

SEE MLP 3/292A  
SEE MLP 3/292B

SEE MAP 30 6 24AC

480,500

SEE MAP 30 6 24B

1/16 COR.

4,156,000

CEN. SEC. 30 6 24BD RIDDLE