

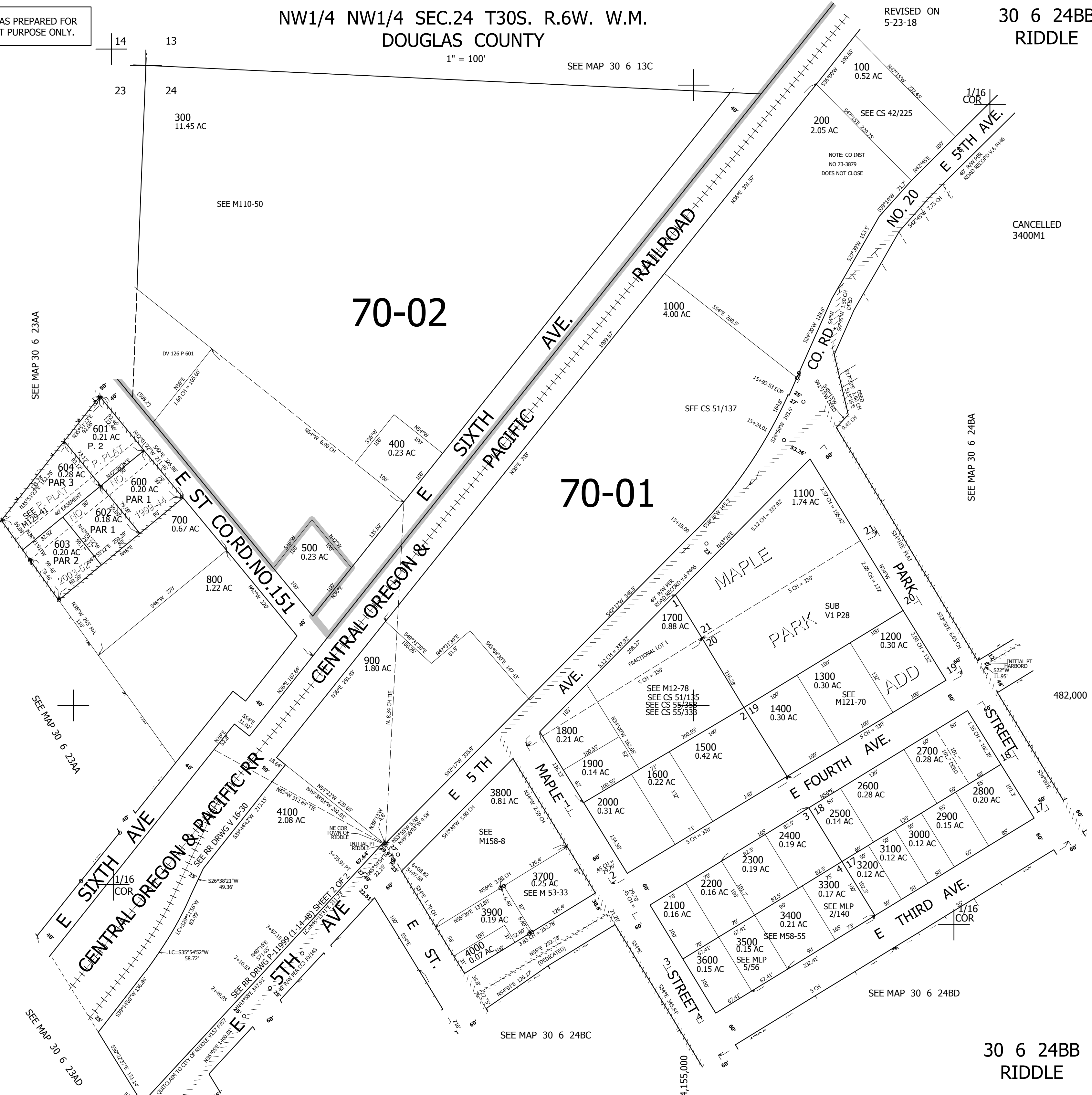
THIS MAP WAS PREPARED FOR ASSESSMENT PURPOSE ONLY.

NW1/4 NW1/4 SEC.24 T30S. R.6W. W.M.
DOUGLAS COUNTY

REVISED ON
5-23-18

30 6 24BB
RIDDLE

1" = 100'
SEE MAP 30 6 13C



70-02

70-01

SEE MAP 30 6 24BA

SEE MAP 30 6 24BD

SEE MAP 30 6 24BC

30 6 24BB
RIDDLE

SEE MAP 30 6 23AA

SEE MAP 30 6 23AA

SEE MAP 30 6 23AD

CANCELLED
3400M1

482,000

4,155,000