

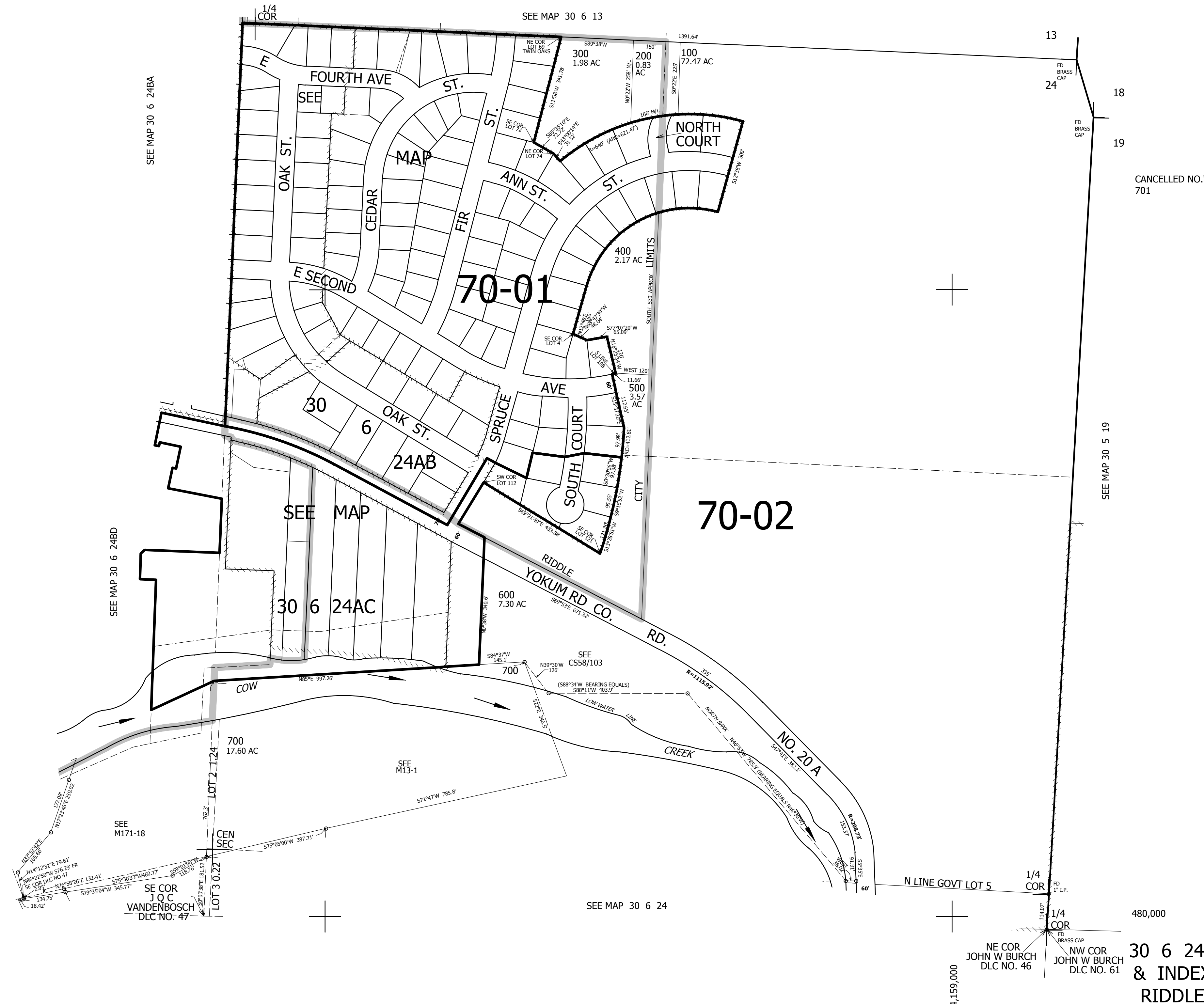
THIS MAP WAS PREPARED FOR ASSESSMENT PURPOSE ONLY.

NE1/4 SEC.24 T30S. R.6W. W.M. DOUGLAS COUNTY

REVISED ON 2-14-17

30 6 24A & INDEX RIDDLE

1" = 200'



CANCELLED NO.'S 701

30 6 24A & INDEX RIDDLE

4,159,000

480,000