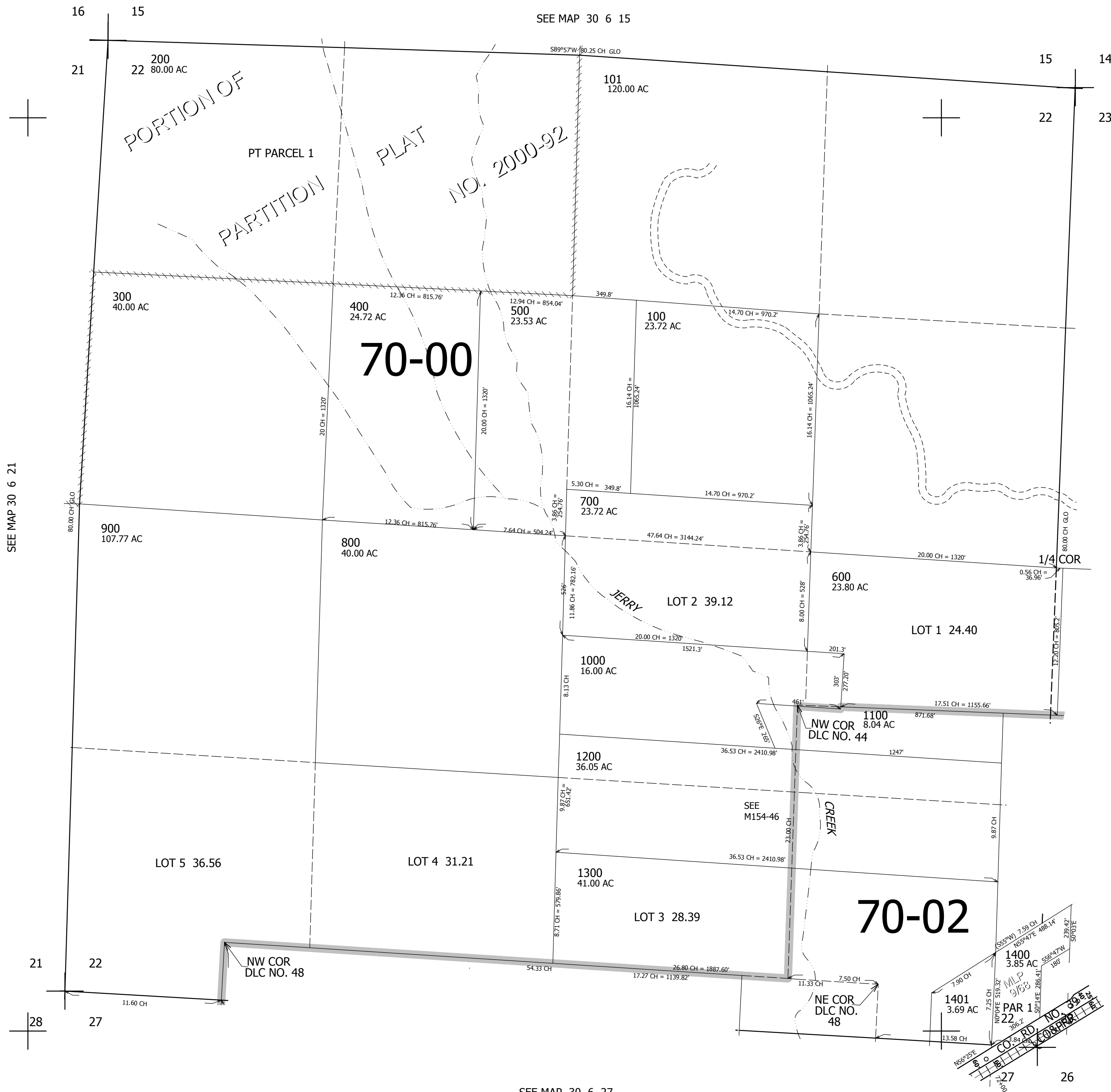


THIS MAP WAS PREPARED FOR ASSESSMENT PURPOSE ONLY.

SEC.22 T30S. R.6W. W.M. DOUGLAS COUNTY
1" = 400'

REVISED ON 8-16-17

30 6 22



CANCELLED NO'S

SEE MAP 30 6 23

SEE MAP 30 6 23C

478,000

SEE MAP 30 6 27

4,148,000

30 6 22