

THIS MAP WAS PREPARED FOR
ASSESSMENT PURPOSE ONLY.

NW1/4 SEC.21 T.27S. R.5W. W.M.
DOUGLAS COUNTY

1" = 200'

REVISED ON
3-16-16

27 5 21B
ROSEBURG

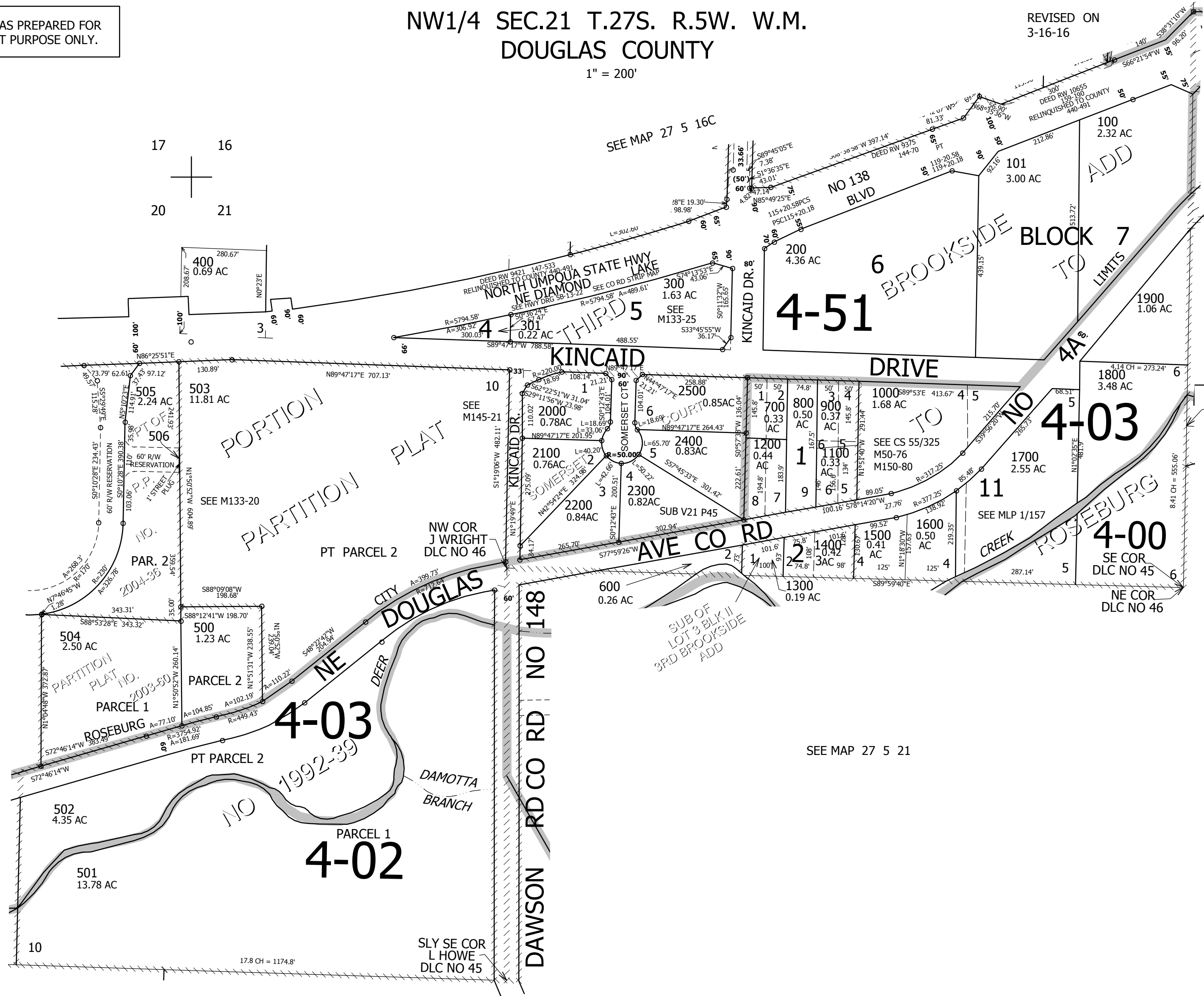
CANCELLED NO'S
507 508 101A1
101A2

SEE MAP 27 5 16DC

1/4
COR

SEE MAP 27 5 21AB

SEE MAP 27 5 21



SEE MAP 27 5 20

SEE MAP 27 5 21

SEE MAP 27 5 21

1/4
COR

CEN
SEC

574,000

4,176,000

27 5 21B
ROSEBURG