

THIS MAP WAS PREPARED FOR ASSESSMENT PURPOSE ONLY.

NE1/4 NW1/4 SEC.18 T.27S. R.5W. W.M. DOUGLAS COUNTY

REVISED ON 4-6-16

27 5 18BA ROSEBURG

1/16 COR.

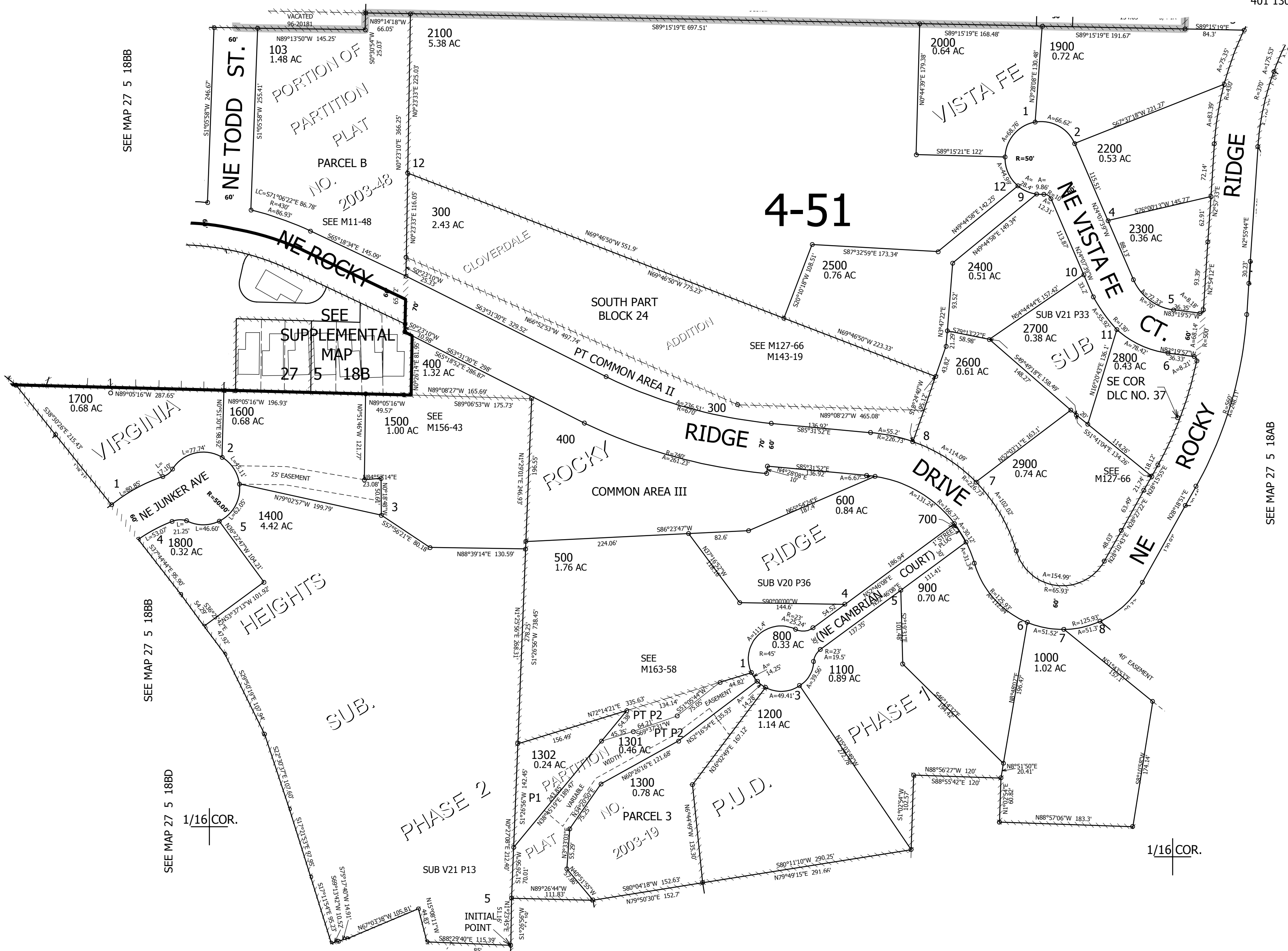
1" = 100'

1/4 COR.

CANCELLED NO'S
104 105 102
100 107 108
200 201 202
301 302 101
401 1303

SEE MAP 27 5 7CD

4-51



SEE MAP 27 5 18BB

SEE MAP 27 5 18AB

SEE MAP 27 5 18BB

SEE MAP 27 5 18BD

581,000

SEE MAP 27 5 18BD

4,165,500

27 5 18BA ROSEBURG